



SAILING HANDBOOK

*Home of the Sydney Harbour Regatta
and Sydney Short Ocean Racing Championship*

www.mhyc.com.au



Overseas Charter Holidays

We make sailing fun, affordable and accessible not just in Australia but overseas as well, with our popular Allsail group charters!

Let us do all the planning for you, so you can totally relax as you enjoy the best yachts, highest quality service and incredible deals.

Some of the mind-blowing sailing destinations include:

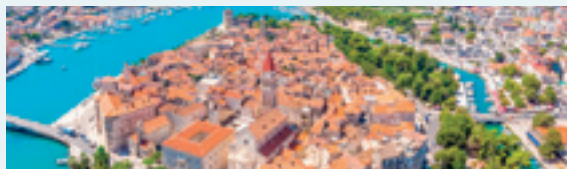
The Mediterranean – Croatia, Greece, Turkey, Sardinia and Corsica

The Americas – Canada and the Caribbean
Asia and the Pacific – Phuket in Thailand and the Kingdom of Tonga

Having personally experienced these sailing destinations with our overseas charter partners, we're more than happy to assist with planning your sailing itinerary to these popular destinations.

Ready to enjoy a fabulous overseas charter experience?

Give Allsail a call to discuss your overseas charter holiday plans or to find out more about our club sailing, yacht charter, yacht share, racing and regattas, and sail training on Pittwater.



TROGIR – CROATIA

+61 (0)2 9979 6266
www.allsail.com.au



IONIAN ISLANDS – GREECE



BONIFICO – CORSICA



VANCOUVER ISLAND
– CANADA



SAINT-VINCENT
– THE CARIBBEAN



PHUKET – THAILAND

HOW MUCH WILL YOU SAVE ON YOUR HOME LOAN WITH A MATES RATES MORTGAGE BROKERS CASH-BACK LOAN?

WHETHER YOU'RE BUYING,
INVESTING OR REFINANCING, WE
PROVIDE MASSIVE SAVINGS
COMPARED TO OTHER BROKERS
OR DIRECT TO LENDER LOANS



DID YOU KNOW
YOU CAN ALSO USE

MRMB

for investment loans, business finance
and even for purchasing
boats or cars or
even that Dream
Sailboat Charter
in Greece with
ALLSAIL!

SINCE 2005, WE'VE
CREDITED MORE
THAN \$9 MILLION
CASH-BACK ON OUR
CLIENTS HOME
LOANS!

You too can be like Scott Pape,
the Barefoot Investor

"I used them when I bought my
farm and when the cash-back was
kicked-back to my loan each
month I got the same buzz I
assume a pokie-punter gets when
they score 'five free spins' on the
pokies'."

matesratesmortgages.com.au



Your Waterfront Development Partner

Copley Marine Consulting Group is a specialist in domestic waterfront developments and your partner in the Planning Approvals of Jetties, Pontoons, Mooring Pens and Seawalls.

We specialise in providing:





- Concept Designs
- Planning Approvals -
- Landowners Consents and Development Applications
 - Engineering
- Computer Aided Design (CAD)
 - Project Management



COPLEYMARINE
CONSULTING GROUP

Address: Suite 1a, level 2, 802 Pacific Highway Gordon
Phone: 9844 5428 **Email:** admin@copleymarine.com.au

Call your trusted advisors for all your property needs

-  Sales
-  Property Management
-  Valuations
-  JP Services

Tim 0421 997 845
Glen 0411 249 955

9948 7080

twirth@ljhseaforth.com.au

553 Sydney Rd,
Seaforth NSW 2092



Tim Wirth

Glen Wirth



EXPERT SALES SERVICE

Contact Alby Pratt or Billy Sykes for
all your sales and service needs.

Alby.Pratt@northsails.com

Billy.Sykes@northsails.com



SYDNEY
12 Polo Avenue
Mona Vale, New
South Wales
northsails.com

INCREASE BRAND AWARENESS

PROMOTIONAL PRODUCTS

BEYOND
PRINT • PROMO • SIGNS

PH. 0420 453 805
info@beyondprinting.sydney



MIDDLE HARBOUR YACHT CLUB SAILING HANDBOOK 2022 - 2023

ORGANISING AUTHORITY

Middle Harbour Yacht Club

75 Lower Parriwi Road, The Spit, Mosman NSW 2088 PO Box 106, Seaforth NSW 2092

P: 02 9969 1244 F: 02 9969 3326 W: www.mhyc.com.au E: info@mhyc.com.au

BOARD OF DIRECTORS

Chairman & Commodore:

Rob Aldis

Directors:

Phil Clinton

Neil Drabsch

Shaun Lane

Peter Lewis

Nicola Morgan

Quentin Stewart

FLAG OFFICERS

Commodore:

Rob Aldis

Vice Commodore Racing:

Vacant

Vice Commodore Youth Sailing:

Rob Sangster

Vice Commodore Cruising:

Susanna Westling

Club Captain:

Bryan Moore

SAILING COMMITTEE

Chairman - Commodore :

Rob Aldis

Vice Commodore Racing:

Vacant

Vice Commodore Youth Sailing:

Rob Sangster

Vice Commodore Cruising:

Susanna Westling

Chairman Special Events:

Ian Box

Chief Special Regulations Auditor:

Phil Darling

Inshore Divisions 1 & 2:

Neil Padden

Inshore Division 3:

John Crawford

Wednesday Divisions:

Julie Hodder

Thursday Twilight Divisions:

Peter Charles

Women's Sailing:

Deborah Dalziel

Farr 40 Division:

Gordon Ketelbey

Adams 10 Division:

Kim Darling

Cruising Division:

Dallas O'Brien

Co-opted Member:

Phil Clinton

Co-opted Member:

Toby Gursanscky

Sailing Manager & Principal Race Officer:

David Staley

TENANTS DIRECTORY

Australian Sailing Team

8424 7403

Flying Fish

Andy Fairclough

9969 8590

Pacific Rigging

Angus Clark

9960 8181

Cover Photo: Adams 10 racing in the Sydney Harbour Regatta. Photo by Andrea Francolini.

OFFICIALS

National Race Officer:	David Staley
State Race Officer:	Toby Gursanscky
Club Race Officers:	Demetris Cristodoulou
	Kim Darling
	Kathy Johnston
	Michael Mansley
	Robert Mason
	Bryan Moore
	Rob Ogilvie
	Neil Padden
	Catherine Rofe
	Andrew Rogers
	Jervis Tilly
	Steve Tucker
Protest Committee Members:	Robert Armstrong
	Kerry Burke
	Geoff Charters
National Equipment Auditors:	Phil Darling
	Tony Levett
	Mike McEvoy
	Philip West
Club Equipment Auditors:	Glynne Attersall
	Oliver Baasch
	Deborah Dalziel
	Andrew Forbes
	Evan Hodge
	Peter Lewis
	Bryan Moore
	Dallas O'Brien
	Catherine Rofe
	Paul Wotherspoon

CEO

Sailing Department

Sailing Manager
Sailing Administrator
Sailing Administrator
Youth Sailing Manager

Administration & Accounts

Finance Manager
Accounts
Reception

Marina Services

Marina Manager
Tender Service

Membership, Food & Beverage

Membership
Food & Beverage

STAFF DIRECTORY

Mark Maybury	ceo@mhyc.com.au
David Staley	sailing.manager@mhyc.com.au
Catherine Rofe	sailing@mhyc.com.au
Kathy Johnston	sailing@mhyc.com.au
Felix Prince	discoversailing@mhyc.com.au
Bruce Aitken	finance.manager@mhyc.com.au
Sue Batty	accounts@mhyc.com.au
Kathryn Thorowgood	reception@mhyc.com.au
Andrew Forbes	marina@mhyc.com.au
VHF 73 / 0450 275 554	tender@mhyc.com.au
	membership@mhyc.com.au
	fandb@mhyc.com.au

MHYC SAILING HANDBOOK

TABLE OF CONTENTS

MHYC Contacts	5
MHYC Sailing By-Laws	8
Safety & Emergency Procedures	9
Aquatic Licence Conditions	11
Sydney Harbour Evacuation Points	13
Sailing Calendar	14
Notice of Race	27
Entry Fees	36
MHYC Race Series	38
Handicapping	40
Ocean Pointscore Series – Schedule & Sailing Instructions	41
Inshore Annual, Spring & Summer Series – Schedule & Sailing Instructions	42
Inshore Sprint Series – Sailing Instructions	51
Wednesday Non-Spinnaker Series – Schedule & Sailing Instructions	55
Thursday Twilight Non-Spinnaker Series – Schedule & Sailing Instructions	65
Feature Event Series – Schedule & Notice of Race	74
Winter Pursuit & Leading Edge Series – Schedule & Sailing Instructions	76
Winter Sprints Series – Schedule & Sailing Instructions	79
MHYC Major Regattas	82
MHYC Women’s Sailing	83
MHYC Cruising Division	84
Charity and Corporate Events	86
Sailability Middle Harbour	87
MHYC Major Trophies and Awards	88
Mark Descriptions & Locations	91
Chartlet	93

ADVERTISER INDEX

All Sail	Inside Front Cover
Beyond Printing	4, 90
Charter Hall	92
Copley Marine Services	2
LJ Hooker Seaforth	3
Mates Rates Mortgage Brokers	1
Nautilus Marine	Back Cover
North Sails	4
Pacific Rigging	54

MHYC SAILING BY-LAWS

1. The responsibility for developing and optimising an annual Sailing Program in keeping with the needs and interests of the Club's sailing membership shall be vested in a Committee titled 'The Sailing Committee'. This Committee shall comprise a Chairman, the Sailing Manager, the Club's Chief Special Regulations Officer, the Club's Principal Race Officer and a Club Member entitled to hold office representing:
 - (i) the Club's Offshore Racing Divisions;
 - (ii) each of the Club's Inshore Racing Divisions;
 - (iii) the Club's Cruising Division;
 - (iv) the Club's Centreboard Division;
 - (v) the Club's Twilight Divisions;
 - (vi) the Club's Wednesday Divisions;

The conduct and control of club racing program shall be vested in the Sailing Manager and for Major Regattas and long races shall be vested in a Special Events Committee which shall comprise a Chairman and the Sailing Manager with additional members having the appropriate knowledge. The Chairman of the Sailing Committee shall be a Flag Officer of MHYC. The Flag Officers' Committee may at its discretion alter, amend or countermand any resolution or action of the above-mentioned Committees.
2. Only boats owned by Life, Senior and Full Adult members shall be accepted into the Register of Boats. The Register of Boats owned by members shall be kept and all details deemed necessary shall be kept therein. A boat shall not be registered on the Club's register until launched.
3. Middle Harbour Yacht Club numbers prefixed MH are issued by the Club under the authority of Australian Sailing New South Wales. MH prefixed numbers previously allotted may be reserved for a period of six months in the event of their being temporarily out of use. A boat on the Register of the Club shall only be entitled to one set of numbers issued by or under the authority of Australian Sailing New South Wales, and application for the issue of such numbers shall be made through the Sailing Manager. Boats on the register of Middle Harbour Yacht Club, at the discretion of the owner, may be issued with un-prefixed or MH (interjoined) prefixed numbers of a size determined by the RRS Appendix G. Where the number includes a prefix or class symbol this shall be part of the number and shall be included on all sails requiring such number.

All boats shall be identified by such a number. On white sails, MH numbers shall be red in colour. Unprefixed numbers shall be black, dark blue or red. On dark or coloured sails, MH numbers shall be a clearly contrasting colour. All sail numbers shall comply with RRS Appendix G.
4. In the event of a member selling their boat to another member, joint application shall be made to the Sailing Manager for the transfer of the number where such transfer is desired.
5. In the event of a member selling their boat to a non-member, all Club distinguishing signs, both sail numbers and burgees, shall be removed from the boat and sails, and the Sailing Manager shall be advised of the sale.
6. All entrants in Club races shall comply with the sailing instructions issued by the Sailing Committee. Boats shall be a monohull and self-righting. A boat's class rules shall apply only when a boat is racing in a class fleet or event.
7. The conduct of races for class boats within the Club shall be under terms and conditions as laid down by the Sailing Committee from time to time.
8. The MHYC Burgee shall be displayed by MHYC yachts at all times whilst competing in a MHYC Event (refer to MHYC NOR 10).

SAFETY AND EMERGENCY PROCEDURES

Boats that retire from racing must notify the Race Committee at the earliest opportunity on the designated VHF race frequency or by calling the Sailing Office.

RULES & REGULATIONS

To minimise the risks of racing and boating, the 'Person in Charge' and their crew, must be familiar with and comply with the Rules and Regulations as described in the current:

- Racing Rules of Sailing (RRS)
- Prescriptions and Special Regulations of Australian Sailing
- International Regulations for the Prevention of Collision at Sea (IRPCS)
- Marine Safety Act 1998 and Marine Safety Regulations 2016
- NSW Maritime regulations that apply to boating on Sydney Harbour
- MHYC Sailing Handbook

BEFORE RACING

The 'Person in Charge' aboard each boat is responsible for ensuring that the boat is properly prepared and that all crew are adequately briefed or trained. The 'Person in Charge' shall:

- Ensure the boat's Safety Equipment Audit Form lodged with the club is current and appropriate for the category of the event in which the boat is racing
- Ensure that all required Safety Equipment is on board and in good working condition
- Ensure all crew members are affiliated with Australian Sailing as members of a club, or have a valid SailPass, and therefore have personal accident insurance
- Ensure that the boat's crew list is completed or updated by the commencement of each race
- Ensure the crew knows where the Safety and Life Saving Equipment is stowed and how to correctly use it
- Ensure all crew is briefed on an Incident Management Plan in the event of an incident, including roles and procedures to be followed
- Ensure all crew is familiar with the boat's Man Overboard (MOB) procedures
- Ensure appropriately experienced crew is on board to cope with the conditions likely to be experienced
- Ensure that the boat reports to the Race Committee its intention to start the race

EMERGENCY CONTACTS

Emergency Services (Police / Fire / Ambulance)

NSW Water Police (Marine Area Command)

Volunteer Marine Rescue NSW

Middle Harbour Volunteer Marine Rescue

Boat Assist 24

NSW Maritime (Rozelle)

Australian Maritime Safety Authority

Mosman Police

Northern Beaches Hospital

Royal North Shore Hospital

MHYC Sailing Office

MHYC Race Management

000

000 / 9320 7499

VHF 16 9450 2468

9969 3270

0427 506 789

VHF 16 9563 8522

1800 627 484

9969 1933

9105 5000

9926 7111

VHF 73 9969 1244

VHF 72

INCIDENT AND EMERGENCY MANAGEMENT PLAN

The MHYC Sailing Operations Policy outlines procedures and guidance notes for boats and crew in the event of an incident or emergency. All boats shall have their own Incident Management Plan to deal with minor incidents. For major incidents and emergencies, the following actions should be performed where appropriate:

- **Man Overboard**
Commence man overboard procedure.
Recover the man overboard.
- **Injuries**
Cease racing.
If the injury occurs on another boat, render assistance if required.
Determine nature of injury and render first aid.
Contact emergency services for direction if required and then contact MHYC.
At MHYC, the T-head on Marina Arm B is the Emergency Access Point.
- **Vessel in Danger**
Instruct all crew to wear personal flotation devices.
If the vessel is in immediate danger contact the emergency services.
Deploy anchor or other safety devices if appropriate.
- **Evacuation of Injured Crew**
Emergency Authority will direct you to an appropriate rendezvous.
This may be at the nearest available wharf in Sydney Harbour (see page 13).
At MHYC, the T-head on Marina Arm B is the Emergency Access Point.
- **Vessels Requiring Towing**
The MHYC Tenders are not designed, adequately equipped nor staffed to tow boats.
Requests for towing are to be directed to NSW Water Police or Marine Rescue NSW or Boat Assist 24 (see emergency contacts on page 9).

REPORTING MARINE INCIDENTS

A written report must be forwarded to the MHYC Sailing Office within 24 hours, setting out the particulars regardless of the type of incident.

A written report must be forward to NSW Maritime within 24 hours setting out the particulars of the incident if one of the following applies:

- The incident has resulted in the death or injury to a person
- The incident has result in damage in excess of \$5000 to a vessel or any other property
- Damage or risk to the environment has occurred.

The NSW Maritime Incident Report Form is available at:

<https://www.service.nsw.gov.au/transaction/submit-vessel-incident-reports>

The 'Person in Charge' should be aware that the Racing Rules of Sailing (RRS) only apply between vessels that are racing. All other recreational vessels (including sailing vessels when not racing) are governed by the International Regulations for the Prevention of Collision at Sea and NSW Maritime regulations.

NSW MARITIME BRIEF

1. Be safe!
2. Observe NSW Marine Safety Regulations 2016 and note:
 - Nothing in these Rules shall exonerate any vessel, or the owner, master or crew thereof, from the consequences of any neglect to comply with these Rules or of the neglect of any precaution which may be required by the ordinary practice of seamen, or by the special circumstances of the case.
 - In complying with these Rules due regard shall be had to all dangers of navigation and collision and to any special circumstances, including the limitations of the vessels involved, which may make a departure from these Rules necessary to avoid immediate danger.
 - What this means is that if you're about to be involved in a collision, having stood on or given way in accordance with the Rule; every party involved is responsible in taking avoiding action to prevent a collision.
3. Local Rules require sail craft to keep out of the way of ferries displaying the orange diamond. When necessary give priority to the Ferry and pass well clear.
4. Be mindful of larger ships' bow flare. When closing any vessel, to prevent being overrun ensure you remain within sight of the officer of the watch on the vessel's bridge. Beware of overhanging bows and other parts of ship that might obstruct this line of sight. This means that your vessel may disappear from sight inside 200-400 m from the bows of very large ships.
5. Shipping Sound Signal meanings:
 - One short blast - I am altering course to starboard (right)
 - Two short blasts - I am altering course to port (left)
 - Three short blasts - I am operating engines astern (stopping)
 - Five (or more) short blasts – I am unsure of your intentions and I doubt whether you are taking enough avoiding action to avoid collision.

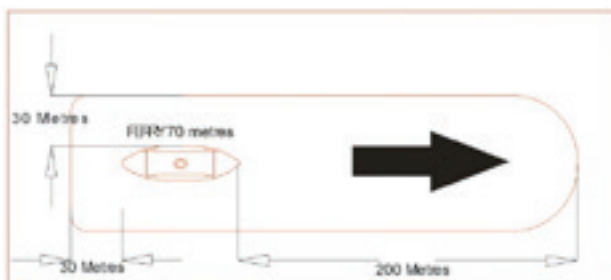
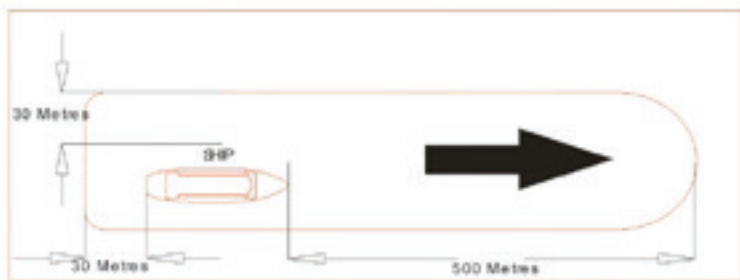
ADDITIONAL CONDITIONS

6. Attendance at the Annual MHYC Skippers Briefing is mandatory to ensure that all competitors receive a briefing in relation to the requirement to keep clear of ships and ferries.
7. Yachts shall not navigate between moorings while racing.
8. Vessels shall not pass between the bow of any Seagoing Ship and a dedicated Port Authority NSW escort vessel.
9. Competing yachts shall maintain a minimum distance of 200m from the bow, and 30m from the sides or stern of any Ferry underway.

When navigating in the vicinity of the Safe Water Mark 350 metres southeast of Bradleys Head, competitors shall pass to the north of the buoy when proceeding westward, and to the south of the buoy when proceeding eastward. If that is not practicable, competitors shall maintain a safe distance from other vessels.

SHIP & FERRY ACTIVATED EXCLUSION ZONE

1. Competitors shall:
 - not pass between the bow of any Seagoing Ship and a dedicated NSW Port Authority escort vessel whilst on escort duty
 - maintain a minimum distance of 500 metres from the bow and 30 metres from the side or stern of any Seagoing Ship underway
 - maintain a minimum distance of 200m from the bow, and 30m from the sides or stern of any Ferry underway
2. Competitors are to be aware of the requirements listed in the Sydney Ports Steer Clear brochure which may be viewed online – [click here](#)



EVACUATION POINTS IN SYDNEY HARBOUR

EMERGENCY GUIDE – PORT JACKSON**AMBULANCE | POLICE | FIRE: 000 OR 122**

NSW Police Marine Area Command: 1800 658 784
 NSW RMS (Maritime): 13 12 36
 Middle Harbour Yacht Club: 9969 1244

NSW Marine Rescue Port Jackson: 9337 5033
 NSW Marine Rescue Middle Harbour: 9969 3270
 NSW Marine Rescue Terry Hills Radio: 9450 2468

**EMERGENCY
VHF RADIO
CH 16**

**AMBULANCE PICK UP POINTS**

A – Manly Wharf, Manly
 B – Middle Harbour Yacht Club Marina, Mosman
 C – Taronga Zoo Wharf, Mosman
 D – Cremorne Point Wharf, Cremorne

E – Royal Sydney Yacht Squadron, Kirribilli
 F – Man 'O' War Steps, Opera House
 G – Cruising Yacht Club of Australia
 H – Rose Bay Public Wharf, Rose Bay

MHYC SAILING PROGRAM 2022-2023

SEPTEMBER	Start	Event
Thursday, 1 September 2022	1900	Skippers & Crew Meet & Greet
Saturday, 3 September 2022	1000	MHYC Opening Day
Saturday, 3 September 2022	1230	Feature Race - Commodore's Front Up Cup
Saturday, 3 September 2022		Lion Island Race (SASC)
Sunday, 4 September 2022		Father's Day
Wednesday, 7 September 2022	1300	Pacific Rigging Wednesday Non Spinnaker Series 1
Saturday, 10 September 2022	1100	Farr 40 One Design Trophy
Saturday, 10 September 2022	1250	Adams 10 Combined Clubs Series (RPEYC)
Saturday, 10 September 2022	1250	Inshore IRC Annual Pointscore
Sunday, 11 September 2022	0900	Sailability Middle Harbour
Sunday, 11 September 2022	1100	Farr 40 One Design Trophy
Wednesday, 14 September 2022	1300	Pacific Rigging Wednesday Non Spinnaker Series 1
Thursday, 15 September 2022	1900	Annual Skippers Briefing
Saturday, 17 September 2022	1100	MC38 Act 6
Saturday, 17 September 2022	1200	CYCA Short Ocean Pointscore (CYCA)
Saturday, 17 September 2022	1300	Adams 10 Annual Pointscore
Saturday, 17 September 2022	1300	Inshore IRC Annual Pointscore
Sunday, 18 September 2022	1000	Cruising Group Sailing Sunday at MHYC and Safety Talk
Sunday, 18 September 2022	1100	MC38 Act 6
Wednesday, 21 September 2022	1300	Pacific Rigging Wednesday Non Spinnaker Series 1
Saturday, 24 September 2022	1000	CYCA Blue Water Pointscore - Flinders Islet
Saturday, 24 September 2022	1300	Adams 10 Annual Pointscore - Sprints
Saturday, 24 September 2022	1300	Farr 40 Sprint Series
Saturday, 24 September 2022	1300	Inshore IRC Annual Pointscore - Sprints
Saturday, 24 September 2022	1300	Inshore ORC / PHS Annual / Spring Pointscore - Sprints
Saturday, 24 September 2022	1300	Inshore Sprint Series
Saturday, 24 September 2022	1300	SASC Super 30 Sprints
Sunday, 25 September 2022	0900	Sailability Middle Harbour
Sunday, 25 September 2022	1300	Sydney Harbour Women's Keelboat Series (MHYC)
Sunday, 25 September 2022	1400	Centreboard Club Championship
Wednesday, 28 September 2022	1300	Pacific Rigging Wednesday Non Spinnaker Series 1
Thursday, 29 September 2022	1700	Twilight Warm-Up (Non-Pointscore)

Sailing Handbook 2022-2023

OCTOBER	Start	Event
Saturday, 1 October 2022		Ladies of the Sea - RSYS
Saturday, 1 October 2022		Long Weekend Cruise to Pittwater
Sunday, 2 October 2022		Daylight Saving Commences
Sunday, 2 October 2022		Long Weekend Cruise to Pittwater
Monday, 3 October 2022		Labour Day Holiday
Monday, 3 October 2022		Long Weekend Cruise to Pittwater
Wednesday, 5 October 2022	1330	Pacific Rigging Wednesday Non Spinnaker Series 1
Thursday, 6 October 2022	1800	Flagstaff Marine Thursday Twilight Pre-Christmas Series
Saturday, 8 October 2022	1000	CYCA Ocean Pointscore - Lion Island
Saturday, 8 October 2022	1100	Farr 40 One Design Trophy
Saturday, 8 October 2022	1230	Beneteau Race Series - Harbour Trek
Saturday, 8 October 2022	1230	Feature Race - Harbour Trek
Sunday, 9 October 2022	0900	Sailability Middle Harbour
Sunday, 9 October 2022	1100	Farr 40 One Design Trophy
Sunday, 9 October 2022		Women's Try Sailing Day
Wednesday, 12 October 2022	1330	Pacific Rigging Wednesday Non Spinnaker Series 1
Thursday, 13 October 2022	1800	Flagstaff Marine Thursday Twilight Pre-Christmas Series
Thursday, 13 October 2022	1800	Thursday Twilight Women's Series
Friday, 14 October 2022	1900	CYCA Blue Water Pointscore - Tollgate Island
Saturday, 15 October 2022	1250	Combined Clubs Inshore Series (RSYS)
Saturday, 15 October 2022	1250	Inshore IRC Annual Pointscore
Saturday, 15 October 2022	1250	Inshore ORC / PHS Annual / Spring Pointscore
Saturday, 15 October 2022		Waitangi Cup (Adams 10)
Sunday, 16 October 2022		Waitangi Cup (Adams 10)
Monday, 17 October 2022	1830	BBQ & Cruising Division Meeting
Wednesday, 19 October 2022	1330	Pacific Rigging Wednesday Non Spinnaker Series 1
Thursday, 20 October 2022	1800	Flagstaff Marine Thursday Twilight Pre-Christmas Series
Saturday, 22 October 2022	1200	CYCA Short Ocean Pointscore (RSYS)
Saturday, 22 October 2022	1300	Inshore IRC Annual Pointscore
Saturday, 22 October 2022	1300	Inshore ORC / PHS Annual / Spring Pointscore
Sunday, 23 October 2022		Make A Wish Cruise
Wednesday, 26 October 2022	1330	Pacific Rigging Wednesday Non Spinnaker Series 1
Thursday, 27 October 2022	1800	Flagstaff Marine Thursday Twilight Pre-Christmas Series
Friday, 28 October 2022		Giant Steps
Saturday, 29 October 2022	1000	CYCA Ocean Pointscore - Botany Bay
Saturday, 29 October 2022	1300	Adams 10 Annual Pointscore - Sprints
Saturday, 29 October 2022	1300	Farr 40 Sprint Series

Sailing Handbook 2022-2023

Saturday, 29 October 2022	1300	Inshore IRC Annual Pointscore - Sprints
Saturday, 29 October 2022	1300	Inshore ORC / PHS Annual / Spring Pointscore - Sprints
Saturday, 29 October 2022	1300	Inshore Sprint Series
Sunday, 30 October 2022	0900	Sailability Middle Harbour
Sunday, 30 October 2022	1000	Cruising Group Sailing Sunday and Safety Training Workshop
Sunday, 30 October 2022	1300	Sydney Harbour Women's Keelboat Series (CYCA)
Sunday, 30 October 2022		Balmain Regatta

NOVEMBER	Start	Event
Wednesday, 2 November 2022	1330	Pacific Rigging Wednesday Non Spinnaker Series 1
Thursday, 3 November 2022	1800	Flagstaff Marine Thursday Twilight Pre-Christmas Series
Saturday, 5 November 2022	1200	CYCA Short Ocean Pointscore (MHYC)
Saturday, 5 November 2022	1200	MHYC Ocean Pointscore
Saturday, 5 November 2022	1300	Adams 10 Annual Pointscore
Saturday, 5 November 2022	1300	Inshore ORC / PHS Annual / Spring Pointscore
Sunday, 6 November 2022	1000	Sailing Sunday
Wednesday, 9 November 2022	1330	Pacific Rigging Wednesday Non Spinnaker Series 1
Thursday, 10 November 2022	1800	Flagstaff Marine Thursday Twilight Pre-Christmas Series
Friday, 11 November 2022		ASX Refinitiv
Saturday, 12 November 2022	1000	CYCA Blue Water Pointscore - Bird Island
Saturday, 12 November 2022	1250	Adams 10 Combined Clubs Series (MHYC & MYC)
Saturday, 12 November 2022	1250	Combined Clubs Inshore Series (MHYC & MYC)
Saturday, 12 November 2022	1250	Inshore IRC Annual Pointscore
Saturday, 12 November 2022	1250	Inshore ORC / PHS Annual / Spring Pointscore
Sunday, 13 November 2022	0900	Sailability Middle Harbour
Wednesday, 16 November 2022	1330	Pacific Rigging Wednesday Non Spinnaker Series 1
Wednesday, 16 November 2022		Royal Prince Edward Yacht Club Centenary Regatta
Thursday, 17 November 2022	1800	Flagstaff Marine Thursday Twilight Pre-Christmas Series
Thursday, 17 November 2022	1800	Thursday Twilight Women's Series
Saturday, 19 November 2022	1000	CYCA Ocean Pointscore - Port Hacking
Saturday, 19 November 2022	1100	Farr 40 One Design Trophy
Saturday, 19 November 2022	1200	Adams 10 NSW Championships
Saturday, 19 November 2022	1300	Adams 10 Annual Pointscore - Sprints
Saturday, 19 November 2022	1300	Farr 40 Sprint Series
Saturday, 19 November 2022	1300	Inshore IRC Annual Pointscore - Sprints
Saturday, 19 November 2022	1300	Inshore ORC / PHS Annual / Spring Pointscore - Sprints
Saturday, 19 November 2022	1300	Inshore Sprint Series
Saturday, 19 November 2022		Cruising Group Tapas-Tie-Up, Sydney Harbour

Sailing Handbook 2022-2023

Sunday, 20 November 2022	1100	Farr 40 One Design Trophy
Sunday, 20 November 2022	1200	Adams 10 NSW Championships
Sunday, 20 November 2022	1300	Sydney Harbour Women's Keelboat Series (RSYS)
Sunday, 20 November 2022		Tapas-Tie-Up, Sydney Harbour
Monday, 21 November 2022	1830	BBQ & Cruising Division Meeting
Wednesday, 23 November 2022	1330	Pacific Rigging Wednesday Non Spinnaker Series 1
Thursday, 24 November 2022	1800	Flagstaff Marine Thursday Twilight Pre-Christmas Series
Saturday, 26 November 2022	1000	CYCA Ocean Pointscore - SSORC Passage Race
Saturday, 26 November 2022	1000	MHYC Ocean Pointscore
Saturday, 26 November 2022	1000	Sydney Short Ocean Racing Championship - Passage Race
Saturday, 26 November 2022	1100	Feature Race - Seven Islands Race
Saturday, 26 November 2022	1100	Jeanneau Cup Series - Seven Islands Race
Saturday, 26 November 2022	1100	Super 40 Spring Regatta
Sunday, 27 November 2022	0900	Sailability Middle Harbour
Sunday, 27 November 2022	1100	MHYC Ocean Pointscore
Sunday, 27 November 2022	1100	Super 40 Spring Regatta
Sunday, 27 November 2022	1100	Sydney Short Ocean Racing Championship – Offshore W/L
Wednesday, 30 November 2022	1330	Pacific Rigging Wednesday Non Spinnaker Series 1



MHYC
YOUTH SAILING

TACKERS

LEARN TO SAIL

Tackers is a fun introductory, games-based sailing program designed for kids aged 7-12 yrs. Kids don't need to have any sailing experience to participate and all the equipment is provided.

Sailing Handbook 2022-2023

DECEMBER	Start	Event
Thursday, 1 December 2022	1800	Flagstaff Marine Thursday Twilight Pre-Christmas Series
Friday, 2 December 2022	1900	CYCA Blue Water Pointscore - Cabbage Tree Island
Saturday, 3 December 2022	1200	CYCA Short Ocean Pointscore (RSYS)
Saturday, 3 December 2022	1250	Inshore ORC / PHS Annual / Summer Pointscore
Saturday, 3 December 2022	1300	Adams 10 Annual Pointscore
Tuesday, 6 December 2022		SOLAS Big Boat Challenge (CYCA)
Wednesday, 7 December 2022	1330	Pacific Rigging Wednesday Non Spinnaker Series 2
Thursday, 8 December 2022	1800	Flagstaff Marine Thursday Twilight Pre-Christmas Series
Saturday, 10 December 2022	1000	CYCA Ocean Pointscore - CYCA Trophy
Saturday, 10 December 2022	1230	Beneteau Race Series - Christmas Cup
Saturday, 10 December 2022	1230	Feature Race - Christmas Cup
Saturday, 10 December 2022		Summer Optimist Regatta Sydney (GRSC)
Sunday, 11 December 2022	0900	Sailability Middle Harbour
Sunday, 11 December 2022		Summer Optimist Regatta Sydney (GRSC)
Wednesday, 14 December 2022	1330	Pacific Rigging Wednesday Non Spinnaker Series 2
Thursday, 15 December 2022	1800	Flagstaff Marine Thursday Twilight Pre-Christmas Series
Thursday, 15 December 2022	1800	Thursday Twilight Women's Series
Friday, 16 December 2022		Cruising Division Xmas Party
Saturday, 17 December 2022	1250	Adams 10 Combined Clubs Series (RSYS)
Saturday, 17 December 2022	1250	Combined Clubs Inshore Series (RSYS)
Saturday, 17 December 2022	1250	Inshore IRC Annual Pointscore
Saturday, 17 December 2022	1250	Inshore ORC / PHS Annual / Summer Pointscore
Monday, 19 December 2022	1830	Cruising Division BBQ (No Formal Meeting)
Sunday, 25 December 2022		Christmas Day
Monday, 26 December 2022		Boxing Day
Monday, 26 December 2022		CYCA Blue Water Pointscore - Rolex Sydney Hobart Yacht Race

Sailing Handbook 2022-2023

JANUARY	Start	Event
Sunday, 1 January 2023		New Year's Day
Sunday, 1 January 2023		New Year's Cruise (Destination TBC)
Tuesday, 3 January 2023		New Year's Cruise (Destination TBC)
Wednesday, 4 January 2023	1330	Pacific Rigging Wednesday Non Spinnaker Series 2
Thursday, 5 January 2023	1800	Flagstaff Marine Thursday Twilight Post-Christmas Series
Friday, 6 January 2023		New Year's Cruise (Destination TBC)
Saturday, 7 January 2023		New Year's Cruise (Destination TBC)
Sunday, 8 January 2023	0900	Sailability Middle Harbour
Sunday, 8 January 2023		New Year's Cruise (Destination TBC)
Wednesday, 11 January 2023	1330	Pacific Rigging Wednesday Non Spinnaker Series 2
Thursday, 12 January 2023	1800	Flagstaff Marine Thursday Twilight Post-Christmas Series
Thursday, 12 January 2023	1800	Thursday Twilight Women's Series
Friday, 13 – Tuesday, 17 January		Sail Melbourne / Australian Para Sailing Champs (RBYC)
Saturday, 14 January 2023	1100	Beneteau Race Series - Chaos Cup & Bedlam Point Cup
Saturday, 14 January 2023	1100	Feature Race - Chaos Cup & Bedlam Point Cup
Monday, 16 January 2023		Cruising Division BBQ
Wednesday, 18 January 2023	1330	Pacific Rigging Wednesday Non Spinnaker Series 2
Thursday, 19 January 2023	1800	Flagstaff Marine Thursday Twilight Post-Christmas Series
Saturday, 21 January 2023	1100	Farr 40 One Design Trophy
Saturday, 21 January 2023	1300	Adams 10 Annual Pointscore - Sprints
Saturday, 21 January 2023	1300	Farr 40 Sprint Series
Saturday, 21 January 2023	1300	Inshore IRC Annual Pointscore - Sprints
Saturday, 21 January 2023	1300	Inshore ORC / PHS Annual / Spring Pointscore - Sprints
Saturday, 21 January 2023	1300	Inshore Sprint Series
Sunday, 22 January 2023	1100	Farr 40 One Design Trophy
Sunday, 22 January 2023	1300	Sydney Harbour Women's Keelboat Series (RANSA)
Wednesday, 25 January 2023	1330	Pacific Rigging Wednesday Non Spinnaker Series 2
Thursday, 26 January 2023		Australia Day
Thursday, 26 January 2023	1000	CYCA Ocean Pointscore - Australia Day Cup
Thursday, 26 January 2023	1000	CYCA Short Ocean Pointscore (CYCA - Australia Day Cup)
Saturday, 28 January 2023	1250	Adams 10 Combined Clubs Series (RANSA)
Saturday, 28 January 2023	1250	Combined Clubs Inshore Series (RANSA)
Saturday, 28 January 2023	1250	Inshore IRC Annual Pointscore
Saturday, 28 January 2023	1250	Inshore ORC / PHS Annual / Summer Pointscore
Sunday, 29 January 2023	0900	Sailability Middle Harbour

Sailing Handbook 2022-2023

FEBRUARY	Start	Event
Wednesday, 1 February 2023	1330	Pacific Rigging Wednesday Non Spinnaker Series 2
Thursday, 2 February 2023	1800	Flagstaff Marine Thursday Twilight Post-Christmas Series
Saturday, 4 February 2023	1200	CYCA Short Ocean Pointscore (MHYC)
Saturday, 4 February 2023	1200	MHYC Ocean Pointscore
Saturday, 4 February 2023	1230	Jeanneau Cup Series - Islands Race
Saturday, 4 February 2023	1300	Inshore ORC / PHS Annual / Summer Pointscore
Wednesday, 8 February 2023	1330	Pacific Rigging Wednesday Non Spinnaker Series 2
Thursday, 9 February 2023	1800	Flagstaff Marine Thursday Twilight Post-Christmas Series
Friday, 10 February 2023		Pittwater Regatta - NSW ORC Championships (RPAYC)
Friday, 10 February 2023		RFI Spurious Challenge TBC
Saturday, 11 February 2023	1000	CYCA Ocean Pointscore - Port Hacking
Saturday, 11 February 2023		Pittwater Regatta - NSW ORC Championships (RPAYC)
Sunday, 12 February 2023	0900	Sailability Middle Harbour
Sunday, 12 February 2023		Pittwater Regatta - NSW ORC Championships (RPAYC)
Sunday, 12 February 2023		RANSA Regatta (RANSA)
Wednesday, 15 February 2023	1330	Pacific Rigging Wednesday Non Spinnaker Series 2
Thursday, 16 February 2023	1800	Flagstaff Marine Thursday Twilight Post-Christmas Series
Thursday, 16 February 2023	1800	Thursday Twilight Women's Series
Saturday, 18 February 2023	1000	Breakfast talk followed by Sailing Sunday
Saturday, 18 February 2023	1200	CYCA Short Ocean Pointscore (RSYS)
Saturday, 18 February 2023	1300	Adams 10 Annual Pointscore
Saturday, 18 February 2023	1300	Inshore IRC Annual Pointscore
Saturday, 18 February 2023	1300	Inshore ORC / PHS Annual / Summer Pointscore
Saturday, 18 February 2023		Sail GP
Sunday, 19 February 2023		Farr 40 NSW Championships
Sunday, 19 February 2023		Sail GP
Monday, 20 February 2023	1830	BBQ & Cruising Division Meeting
Wednesday, 22 February 2023	1330	Pacific Rigging Wednesday Non Spinnaker Series 2
Thursday, 23 February 2023	1800	Flagstaff Marine Thursday Twilight Post-Christmas Series
Friday, 24 February 2023		SAP Redkite Regatta (TBC)
Saturday, 25 February 2023	1000	CYCA Short Offshore Series
Saturday, 25 February 2023	1250	Combined Clubs Inshore Series (RSYS)
Saturday, 25 February 2023	1900	Barefoot Ball
Sunday, 26 February 2023	0900	Sailability Middle Harbour
Sunday, 26 February 2023	1300	Sydney Harbour Womens Keelboat Series (RPEYC)

Sailing Handbook 2022-2023

MARCH	Start	Event
Wednesday, 1 March 2023	1330	Pacific Rigging Wednesday Non Spinnaker Series 2
Thursday, 2 March 2023	1800	Flagstaff Marine Thursday Twilight Post-Christmas Series
Saturday, 4 March 2023		Sydney Harbour Regatta
Sunday, 5 March 2023		Sydney Harbour Regatta
Wednesday, 8 March 2023	1330	Pacific Rigging Wednesday Non Spinnaker Series 2
Thursday, 9 March 2023	1800	Flagstaff Marine Thursday Twilight Post-Christmas Series
Saturday, 11 March 2023	1000	CYCA Short Offshore Series
Saturday, 11 March 2023	1200	CYCA Short Ocean Pointscore (MHYC)
Saturday, 11 March 2023	1200	MHYC Ocean Pointscore
Saturday, 11 March 2023	1300	Adams 10 Annual Pointscore
Saturday, 11 March 2023	1300	Inshore ORC / PHS Annual / Summer Pointscore
Wednesday, 15 March 2023	1330	Pacific Rigging Wednesday Non Spinnaker Series 3
Thursday, 16 March 2023	1800	Flagstaff Marine Thursday Twilight Post-Christmas Series
Thursday, 16 March 2023	1800	Thursday Twilight Women's Series
Friday, 17 March 2023		Making Waves Regatta (CYCA)
Saturday, 18 March 2023	0900	She Sails School Teams Racing Invitational
Saturday, 18 March 2023	1000	CYCA Ocean Pointscore - Lion Island
Saturday, 18 March 2023	1250	Adams 10 Combined Clubs Series (MHYC)
Saturday, 18 March 2023	1250	Combined Clubs Inshore Series (MHYC)
Saturday, 18 March 2023	1250	Inshore IRC Annual Pointscore
Saturday, 18 March 2023	1250	Inshore ORC / PHS Annual / Summer Pointscore
Saturday, 18 March 2023		Cruising Get Together on Sydney Harbour
Sunday, 19 March 2023		Cruising Get Together on Sydney Harbour
Monday, 20 March 2023	1830	BBQ & Cruising Division Meeting
Wednesday, 22 March 2023	1330	Pacific Rigging Wednesday Non Spinnaker Series 3
Thursday, 23 March 2023	1800	Flagstaff Marine Thursday Twilight Post-Christmas Series
Friday, 24 March 2023		Renewable Energy Cup TBC
Saturday, 25 March 2023	1000	CYCA Short Offshore Series
Saturday, 25 March 2023	1200	CYCA Short Ocean Pointscore (CYCA)
Saturday, 25 March 2023	1300	Adams 10 Annual Pointscore
Saturday, 25 March 2023	1300	Inshore IRC Annual Pointscore
Saturday, 25 March 2023	1300	Inshore ORC / PHS Annual / Summer Pointscore
Sunday, 26 March 2023	1000	Cruising Group Sailing Sunday
Sunday, 26 March 2023	1300	Sydney Harbour Women's Keelboat Series (MYC)
Wednesday, 29 March 2023	1330	Pacific Rigging Wednesday Non Spinnaker Series 3
Thursday, 30 March 2023	1800	Flagstaff Marine Thursday Twilight Post-Christmas Series

Sailing Handbook 2022-2023

APRIL	Start	Event
Saturday, 1 April 2023	1300	Adams 10 Annual Pointscore - Sprints
Saturday, 1 April 2023	1300	Farr 40 Sprint Series
Saturday, 1 April 2023	1300	Inshore IRC Annual Pointscore - Sprints
Saturday, 1 April 2023	1300	Inshore ORC / PHS Annual / Spring Pointscore - Sprints
Saturday, 1 April 2023	1300	Inshore Sprint Series
Sunday, 2 April 2023	0200	Daylight Saving Ends
Wednesday, 5 April 2023	1300	Pacific Rigging Wednesday Non Spinnaker Series 3
Friday, 7 April 2023		Easter Cruise (Destination TBC)
Friday, 7 April 2023		Good Friday
Saturday, 8 April 2023		Easter Cruise (Destination TBC)
Sunday, 9 April 2023	0900	Sailability Middle Harbour
Sunday, 9 April 2023		Easter Cruise (Destination TBC)
Sunday, 9 April 2023		Easter Sunday
Monday, 10 April 2023		Easter Cruise (Destination TBC)
Monday, 10 April 2023		Easter Monday
Wednesday, 12 April 2023	1300	Pacific Rigging Wednesday Non Spinnaker Series 3
Saturday, 15 April 2023		Sail Fest Newcastle
Sunday, 16 April 2023		Sail Fest Newcastle
Monday, 17 April 2023	1830	BBQ & Cruising Division Meeting
Wednesday, 19 April 2023	1300	Pacific Rigging Wednesday Non Spinnaker Series 3
Monday, 24 April 2023		Sail Port Stephens - Commodore's Cup
Tuesday, 25 April 2023	1230	Feature Race - Two Up Cup
Tuesday, 25 April 2023		ANZAC Day
Tuesday, 25 April 2023		Sail Port Stephens - Commodore's Cup
Wednesday, 26 April 2023	1300	Pacific Rigging Wednesday Non Spinnaker Series 3
Wednesday, 26 April 2023		Sail Port Stephens - Commodore's Cup
Friday, 28 April 2023		Sail Port Stephens - NSW IRC Championships
Saturday, 29 April 2023		Sail Port Stephens - NSW IRC Championships
Sunday, 30 April 2023	0900	Sailability Middle Harbour
Sunday, 30 April 2023		Sail Port Stephens - NSW IRC Championships

Sailing Handbook 2022-2023

MAY	Start	Event
Wednesday, 3 May 2023	1300	Pacific Rigging Wednesday Non Spinnaker Series 3
Saturday, 6 May 2023	1100	MHYC Women's Regatta
Sunday, 7 May 2023		Mother's Day
Wednesday, 10 May 2023	1300	Pacific Rigging Wednesday Non Spinnaker Series 3
Saturday, 13 May 2023	1230	Winter Pursuit Series
Saturday, 13 May 2023	1900	Annual Prizegiving - Keelboats
Saturday, 13 May 2023		MC38 Act 3
Sunday, 14 May 2023	0900	Sailability Middle Harbour
Sunday, 14 May 2023		MC38 Act 3
Monday, 15 May 2023	1830	BBQ & Cruising Division Meeting
Wednesday, 17 May 2023	1300	Pacific Rigging Wednesday Non Spinnaker Series 3
Saturday, 20 May 2023	1230	Winter Sprint Series
Wednesday, 24 May 2023	1300	Pacific Rigging Wednesday Non Spinnaker Series 3
Saturday, 27 May 2023	1230	Feature Race - Welcome to Winter
Sunday, 28 May 2023	0900	Sailability Middle Harbour
Wednesday, 31 May 2023	1300	Pacific Rigging Wednesday Non Spinnaker Series 3



MHYC offers School Holiday Camps at the end of each term. Camps for Tackers (7-12 years) and Teens (13-17 years) run 4 full days with a focus on fun learning in a social environment.

Sailing Handbook 2022-2023

JUNE	Start	Event
Saturday, 3 June 2023	1230	Winter Pursuit Series
Wednesday, 7 June 2023	1300	Pacific Rigging Wednesday Non Spinnaker Series 4
Saturday, 10 June 2023		Australian Women's Keelboat Regatta (RMYS-VIC)
Sunday, 11 June 2023	0900	Sailability Middle Harbour
Sunday, 11 June 2023		Australian Women's Keelboat Regatta (RMYS-VIC)
Monday, 12 June 2023		Australian Women's Keelboat Regatta (RMYS-VIC)
Monday, 12 June 2023		Queen's Birthday Holiday
Wednesday, 14 June 2023	1300	Pacific Rigging Wednesday Non Spinnaker Series 4
Saturday, 17 June 2023	1230	Winter Sprint Series
Saturday, 17 June 2023		Cruising Group Get Set Safety Checks and Raft-Up
Sunday, 18 June 2023		Cruising Group Get Set Safety Checks and Raft-Up
Monday, 19 June 2023	1830	BBQ & Cruising Division Meeting
Wednesday, 21 June 2023	1300	Pacific Rigging Wednesday Non Spinnaker Series 4
Saturday, 24 June 2023	0900	Get Checked Day
Sunday, 25 June 2023	0900	Sailability Middle Harbour
Wednesday, 28 June 2023	1300	Pacific Rigging Wednesday Non Spinnaker Series 4



MHYC
YOUTH SAILING

LEARN TO SAIL

OUT THERE SAILING

OutThere Sailing (12-17 years) includes a variety of activities using Dinghies, SUP, Kayaks and Powerboat adventures in a social environment. Teenagers can develop friendships while igniting a love for sailing and water activities in the process.

Sailing Handbook 2022-2023

JULY	Start	Event
Saturday, 1 July 2023	1230	Winter Pursuit Series
Sunday, 2 July 2023	1200	Cruising Division Long Lunch
Wednesday, 5 July 2023	1300	Pacific Rigging Wednesday Non Spinnaker Series 4
Saturday, 8 July 2023	1230	Winter Sprint Series
Sunday, 9 July 2023	0900	Sailability Middle Harbour
Wednesday, 12 July 2023	1300	Pacific Rigging Wednesday Non Spinnaker Series 4
Saturday, 15 July 2023	1230	Feature Race - Christmas in July
Monday, 17 July 2023	1830	BBQ & Cruising Division Meeting
Wednesday, 19 July 2023	1300	Pacific Rigging Wednesday Non Spinnaker Series 4
Saturday, 22 July 2023	1230	Winter Pursuit Series
Wednesday, 26 July 2023	1300	Pacific Rigging Wednesday Non Spinnaker Series 4
Saturday, 29 July 2023	1230	Winter Sprint Series
Sunday, 30 July 2023	0900	Sailability Middle Harbour



LEARN TO RACE

MHYC RACE SQUAD

Brewer Racing

Young sailors who have mastered the basic skills and progressed to introductory racing can take the next step with Race Squad. Conducted in partnership with Brewer Racing, expert coaches develop the advanced skills young sailors need to succeed at Optimist and 29er Class Championships.

AUGUST	Start	Event
Wednesday, 2 August 2023	1300	Pacific Rigging Wednesday Non Spinnaker Series 4
Saturday, 5 August 2023	1230	Leading Edge Series
Sunday, 6 August 2023		Cruising Division On-land event
Wednesday, 9 August 2023	1300	Pacific Rigging Wednesday Non Spinnaker Series 4
Thursday, 10 August 2023		Airlie Beach Race Week 10-17 August TBC
Saturday, 12 August 2023	1230	Leading Edge Series
Sunday, 13 August 2023	0900	Sailability Middle Harbour
Monday, 14 August 2023	1830	BBQ & Cruising Division Meeting
Wednesday, 16 August 2023	1300	Pacific Rigging Wednesday Non Spinnaker Series 4
Saturday, 19 August 2023	1230	Leading Edge Series
Saturday, 19 August 2023		Hamilton Island Race Week 19-27 August TBC
Sunday, 20 August 2023	0900	Get Checked Day
Wednesday, 23 August 2023	1300	Pacific Rigging Wednesday Non Spinnaker Series 4
Saturday, 26 August 2023	1230	Leading Edge Series
Sunday, 27 August 2023	0900	Sailability Middle Harbour
Wednesday, 30 August 2023	1300	Pacific Rigging Wednesday Non Spinnaker Series 4
Thursday, 31 August 2023		Magnetic Island Race Week 31 Aug - 6 Sep TBC



MHYC
YOUTH SAILING

TACKERS

LEARN TO SAIL

Tackers is a fun introductory, games-based sailing program designed for kids aged 7-12 yrs. Kids don't need to have any sailing experience to participate and all the equipment is provided.

MHYC NOTICE OF RACE

EFFECTIVE FROM 1ST SEPTEMBER, 2022

The organising authority is Middle Harbour Yacht Club (MHYC)

1 RULES

- 1.1 All events for which MHYC is the Organising Authority shall be governed under:
- the rules, as defined in the current Racing Rules of Sailing (RRS)
 - the Special Regulations of Australian Sailing (AS);
 - the Rules of the respective One Design Classes;
 - the current IRC Rules, if applicable;
 - the current ORC Rules, if applicable;
- 1.2 In the event of a conflict between the rules or regulations, other than RRS, the Notice of Race and Sailing Instructions will prevail.
- 1.3 All MHYC Events are subject to NSW Maritime Regulations, the Marine Safety Regulations 2016 and any MHYC Aquatic Licence or License Exemption issued by Transport for NSW.
- 1.4 This NOR may vary certain specific details of the RRS. The variation of any rule applies only to those details actually mentioned herein and in every other respect the RRS hold good and shall be observed.

2 CHANGES TO CLASS RULES AND RACING RULES OF SAILING

- 2.1 The use of powered winches on boats which compete in MHYC events is permitted. This amends RRS 52.
- 2.2 Any changes made to a boat's hull, engine or propeller, trim or sail area or any other changes likely to result in an improvement in performance shall be notified, in writing, to the Sailing Manager at least 7 days before the race affected by the change.
- 2.3 A boat participating in a MHYC race shall not sail through the start or finish line of another division or another club's race. A boat shall not sail or motor through a MHYC finish line unless it is finishing.
- 2.4 A boat shall comply with the RRS Appendix G, Identification on Sails and MHYC Sailing By-Law 3.
- 2.5 In races or divisions designated non-spinnaker, or where an individual boat has entered as non-spinnaker, only a mainsail and headsails as defined in RRS 55.4 shall be used. Headsails shall not be set flying. No sail shall be set forward of a point of attachment of the permanent forestay.
- 2.6 Boats competing in rated or class races must hold a current valid rating or class measurement certificate. Copies of the above certificates must be lodged with the Sailing Office by 1700 hours on the day preceding the boat's first race.
- 2.7 All boats competing in an IRC Division shall hold a current and valid endorsed certificate. The Certificate rating shall only become effective on the date of submission to the Sailing Office.
- 2.8 IRC Rule 22.4.2 is amended in that it shall not apply for MHYC club events. In the case of Combined Club events, Regattas or Championships the host club's rules shall apply.
- 2.9 The Rules of the Adams 10 Metre Class are amended at the request of the Class such that the use of Mast Head Spinnakers is permitted in their one design or other races conducted by MHYC. These spinnakers shall confirm to the following maximum measurements:
- | | |
|-------------------------------|----------|
| Maximum Luff | 13,689mm |
| Maximum SMV | 8,230mm |
| Maximum length spinnaker pole | 3,727mm |
- 2.10 For all Inshore Club Racing Events, RRS 55.2 is amended by adding an extra sentence to read: "Fixed and retractable spinnaker poles not attached to the mast shall be permitted for the purpose of setting asymmetrical spinnakers (gennakers)".

3 AMENDMENTS TO NOTICE OF RACE OR SAILING INSTRUCTIONS

- 3.1 The Race Committee (RC) reserves the right to amend this NOR or the specific SIs for each event. Any amendment will be made in accordance with RRS 89.2(b) and 90.2(c).
- 3.2 Any change to this NOR or the specific SIs will be posted before 0900 hours on the day it will take effect, except that any change to the schedule of races will be posted by 1800 hours on the day before it will take effect.
- 3.3 The RC may draw attention to any Notices to Competitors that have been posted on the Official Notice Board by displaying Code Flag L from the flagmast at the MHYC Race Officials Box.
- 3.4 The RC may, at its discretion, vary the rules and this NOR if it deems that the entry of a boat in a race or series has the potential to advance the quality of racing in that race or series or contribute to the development of a class or division.

4 EVENT MANAGEMENT

- 4.1 The MHYC Sailing Handbook and its By-Laws, Schedules, Notice of Race and Sailing Instructions are the Notice of Race and Sailing Instructions required under RRS 89.2 and 90.2.
- 4.2 The Race Committee shall be the Sailing Committee of MHYC. The RC shall have the power to co-opt additional members for specific purposes.
- 4.3 For the purpose of this NOR, Event means any MHYC on water activity for which Sailing Instructions have been published.
- 4.4 The Race Committee may at its absolute discretion form or abandon racing divisions appropriate to the entries received for an event.

5 COMBINED CLUB RACES

- 5.1 In any race which is conducted by another Club as a joint race for both that Club and MHYC, MHYC entrants shall race under the conducting Club's Sailing Instructions. Any decision affecting that race made by the RC or Protest Committee of the conducting Club shall apply to the MHYC event, unless otherwise determined by the MHYC RC.

6 ADVERTISING

- 6.1 Advertising on a boat shall comply with the requirements of World Sailing Regulation 20 (Advertising Code).
- 6.2 When required by the Sailing Instructions, a boat shall display the event sponsor's name, logo or backstay flag in accordance with World Sailing Regulations Appendix 1 Section 20.4.1.
- 6.3 The RC reserves the right to reject or cancel the entry of any boat (RRS 76.1) displaying advertising or sponsorship which is in conflict with the club's objectives or those of its sponsors or supporters.

7 ELIGIBILITY AND ENTRY

- 7.1 For a boat to be eligible to enter a MHYC race or series it shall:
 - (a) be owned or chartered to a current Life, Full Adult or Senior category Member;
 - (b) be included on the Boat Register of either MHYC or another Yacht Club affiliated with AS or a World Sailing Member National Authority;
 - (c) hold a current valid AS Special Regulation Equipment Audit Compliance for no less than the Category of event for which it is entered;
 - (d) have paid racing fees prior to competing in an event;
 - (e) have lodged evidence of current and valid marine legal liability cover with MHYC of no less than AUD \$10,000,000 by way of a certificate of currency or policy document copy. It shall be the responsibility of the boat to maintain current and valid cover for the period of the event in which it is an entry and to lodge evidence with MHYC when the cover is renewed or changed.
 - (f) have provided evidence that all regular crew sailing on board are bona fide members of either MHYC, an alternative Yacht Club affiliated with AS, hold a valid SailPass or are

affiliated with another World Sailing Member National Authority. Attention is drawn to RRS 46 and the AS Prescriptions.

- (g) All visiting boats participating in a MHYC event shall meet the requirements of NOR 8.1 or may, alternatively, have on board a member of the Club at which the boat is registered to be the Person in Charge of the boat. The member shall be a member of a Club or other organisation affiliated to a World Sailing Member National Authority.

7.2 The RC may at its discretion vary these eligibility requirements, excluding NOR 7.1(c) & NOR 7.1 (e), if it deems that the entry of a boat in a race or series has the potential to advance the quality of racing in that race or series or contribute to the development of a MHYC class or division.

7.3 Entries shall be online at www.mhyc.com.au and shall be lodged in the case of offshore events by 1200 hours on the Tuesday preceding the commencement of the race or series and in the case of inshore events by 1700 hours on the Thursday preceding the commencement of the race or series. Casual entries may be accepted at the discretion of the Sailing Manager.

7.4 Each yacht is required to register all members of its crew participating in any MHYC race. Failure to register a crew list before the yacht's start time will result in a score of DSQ without a hearing. This changes RRS 63.1 and A5.1.

8 PERSON IN CHARGE (AMENDS RRS 46)

8.1 All MHYC registered boats participating in an MHYC event shall have on board a Life, Full or Senior category Member to be the Person in Charge of the boat at all times.

8.2 Boats participating in MHYC events which are under charter or hire and which currently hold a valid AMSA Commercial Survey may, on prior application to the RC, seek exemption to NOR 8.1 and nominate a Coxswain or Master currently licensed by Transport for NSW as the Person in Charge (Refer MHYC NOR 8.3).

8.3 The Person in Charge is defined by the RC as the person nominated on the race entry form. Where it is intended for another person to be in charge of boat for a race, notification of the change (ensuring compliance against NOR 8.1 & 8.2, as applicable) shall be given in writing to the Sailing Office not less than 3 hours prior to the start of the race or to the RC prior to the warning signal.

9 HELMSPERSON

9.1 A boat shall only be helmed by the person(s) nominated on the entry form as the helmsperson or, alternatively, by a member of the crew who has sailed on the boat in at least 50% of the races in the current series.

9.2 Where it is intended that a person other than the nominated helmsperson(s) is to helm in a race, notification of the change shall be given to the Sailing Office not less than 3 hours prior to the start or to the RC prior to the warning signal.

9.3 The RC may make an adjustment to the handicap of a boat if the divisional representative considers that the change in helmsperson is likely to result in change in the boat's performance.

10 FLAGS AND PENNANTS

10.1 The MHYC Burgee shall be displayed by a MHYC Registered Vessel at all times whilst competing in a MHYC Event.

10.2 A visiting vessel competing in a MHYC event as a casual entrant may display the burgee of the club at which the boat is registered.

11 SAFETY & AS SPECIAL REGULATIONS

- 11.1 Boats must comply with the following AS Special Regulations from Part 1 Section 2;
- a) Offshore Races - Category 4
 - b) Inshore Races - Category 7
- 11.2 All keelboats competing in MHYC races shall have a current valid AS Special Regulations Audit Compliance Form, a copy of which shall be lodged with the Sailing Manager by 1700 hours on the day preceding a boat's first race.
- 11.3 In addition, all keelboats shall carry:
- (a) The current Racing Rules of Sailing (printed or electronic)
 - (b) Two substantial fenders
 - (c) A current MHYC Sailing Handbook
 - (d) A motor in service in accordance with Part 1 clause 3.24 of AS Special Regulations (except where the boat complies to a one design class whose rules do not require motors)
 - (e) A working handheld or installed VHF radio
 - (f) A Lifebuoy, which at a minimum, shall be fitted with marine grade retro-reflective material and shall be a safety colour in the yellow – red range
 - (g) Operational navigation lights, either permanent or portable
 - (h) One item of life saving equipment ready for immediate use (RRS1.2)
 - (i) NSW Maritime Registration Number displayed on transom minimum 100mm letters
 - (j) MHYC Safety Sticker for the current period displayed on the transom
- 11.4 The RC may provide exemptions from the above provisions.
- 11.5 All keelboats competing in MHYC races shall monitor the race management VHF channel.
- 11.6 All crew on deck of Keelboats entered as Two-Handed shall wear a lifejacket which complies with AS Special Regulations Part 1, Section 5 (minimum Level 50).
- 11.7 Owners and skippers are warned that many areas of Sydney Harbour have shallows and rocks where groundings are possible. Groundings may be "soft" (in sand or mud) or "hard" (against rocks) but in all cases there may be significant damage done to the structure of the vessel. Such damage may be obvious, such as keel movement or cracks in the internal structure, or it may be more difficult to see.
- 11.8 Owners and skippers have a responsibility after any unintentional grounding to inspect the vessel and ensure that there is no damage which would detract from its structural integrity and safety. For vessels in Categories 1-3, this is a requirement under Australian Sailing Special Regulation 3.02.6. For vessels in Categories 4-7, it is a MHYC requirement that the person in charge satisfies themselves of the continuing structural integrity and safety of the vessel after any grounding, however minor. The "Model Keel and Rudder Inspection Procedure" in Appendix C to Part 1 of the Australian Sailing Special Regulations could serve as a guide in this inspection.
- 12 AS SPECIAL REGULATIONS - EQUIPMENT AUDITS**
- 12.1 Audits for MHYC Members will take place at a pre-arranged time through the Sailing Office and bookings are essential. Audits may be conducted on most days, subject to the availability of an accredited Equipment Auditor.
- 12.1.1 Audits conducted outside of pre-arranged Get Checked days will be subject to the following service fees:
- (a) \$50 for Categories 1-2
 - (b) \$30 for Categories 3-4
 - (c) \$20 for Categories 5-7.
- 12.2 Equipment Audits shall only be completed on the official form as provided by AS and on the MHYC Requirements form as provided by MHYC.

- 12.3 **All gear shall be laid out for inspection.** Where equipment is not adequately laid out, the Equipment Auditor may refuse to continue the audit. The boat's 'Owner' or 'Person in Charge' and one crew member shall be in attendance during the audit.
- 12.4 Where a boat has 'outstanding items' still required as part of its audit, it shall be ineligible to race. Outstanding items shall be presented with audit form for sign off to an accredited Equipment Auditor or the MHYC Sailing Office.
- 12.5 Under AS Special Regulations 2.02.2, every boat may be subject to a 'spot check' equipment audit. A boat whose equipment is found to be non-complying or whose 'Owner' or 'Person in Charge' acts unreasonably in preventing a 'spot check', may be penalised under regulation 2.02.3.
- 13 CARDINAL MARKS AND HARBOUR ISLANDS**
- 13.1 Boats shall pass on the safe water side of the following Cardinal Marks:
(a) Gowlland Bombora (Dobroyd) – All Marks
(b) Sow and Pigs Reef– All Marks
(c) Shark Island– South and West Marks
- 13.2 Boats shall not sail in the following prohibited areas:
(a) The area bounded by imaginary lines projected from the shore joining the West, South and East Cardinal Marks surrounding Gowlland Bombora.
(b) The area bounded by imaginary lines joining the North, East, South and West Cardinal Marks surrounding Sow and Pigs Reef.
(c) The Area between AS Mark Shark Island and Shark Island is a continuing obstruction and no boat shall pass between them.
(d) The Area between the Port Lateral Mark (Lighthouse) to the North of Shark Island and Shark Island is a continuing obstruction and no boat shall pass between them.
- 13.3 For the purpose of RRS 19 and 20, all Cardinal Marks surrounding the Gowlland Bombora and the Sow and Pigs Reef and all imaginary straight lines projected between such marks, shall be deemed obstructions.
- 13.4 When rounding Shark Island, Clarke Island, Fort Denison or Sow and Pigs Reef as marks of the course being sailed, competitors must give inside overlapped boats room to pass on the safe water side of the cardinal mark on the western side of Shark Island, the safe water side of the lateral mark on the southern side of Clarke Island and the safe water side of the lateral mark on the southern side of Fort Denison. Failing to give room and thereby forcing another boat to pass these cardinal and lateral marks on the unsafe water side will be considered a gross breach of RRS 2.
- 13.5 When navigating in the vicinity of the Safe Water Mark 350 metres southeast of Bradleys Head, competitors shall pass to the north of the buoy when proceeding westward, and to the south of the buoy when proceeding eastward. If that is not practicable, competitors shall maintain a safe distance from other vessels.
- 14 COMMERCIAL SHIPPING**
- 14.1 Boats shall not interfere with the Commercial or Defence Shipping of the Port. The attention of skippers is drawn to Marine Safety Regulations regarding right of way of vessels entering and leaving port, ferries displaying orange diamonds, vessels engaged in towing, and to the International Regulations for Preventing Collisions at Sea. Boats found to have interfered with Commercial or Defence Shipping may be subject to action under RRS 60.2(c). Boats are responsible for any damage they may cause to Navigation Marks in the Port and shall in the event of such damage report the incident to NSW Maritime.
- 14.2 The attention of all Competitors is drawn to NSW Maritime Brief and Ship & Ferry Activated Shipping Zone, in respect of competitors interaction with Commercial Shipping and Ferries on Sydney Harbour. Compliance with these directions is mandatory.

- 14.3 Competing boats and crew are deemed by this NOR to have been advised of NSW Maritime requirements applicable to events conducted by MHYC and boats and crew breaching these requirements will be subject to action under RRS Part 5, Section A.
- 15 CLUBHOUSE START AND FINISH RESTRICTED AREAS**
- 15.1 The areas of moored boats on both sides of the Spit Channel between Spit Bridge and the southern ends of Clontarf and the Western Pumphouse are out of bounds to boats under sail. These restricted areas are defined as the area between the imaginary lines that define the swing mooring boundaries and the adjacent shoreline and for the purpose of RRS 19 and 20 these lines shall be deemed obstructions.
- 15.2 When the Clubhouse Start Line and/or Pumphouse Start Line and/or Clubhouse Finish Line are in use, any boat under sail that is observed to enter a restricted area may be disqualified without a hearing. This amends RRS 63.1.
- 15.3 Competitors are reminded that the Spit Channel is a navigation channel and that boats sailing in the vicinity of the start and finish are required to give way to vessels using the channel.
- 16 CLUBHOUSE / PUMPHOUSE START**
- 16.1 The Clubhouse start line is a transit formed by aligning two orange triangles located adjacent to the MHYC Race Official's Box. The transit bears approximately 065°/245° magnetic.
- 16.2 The Pumphouse start line is a transit formed between the north facing walls of the two (2) grey Pump Station Buildings to the southern end of MHYC Clubhouse, one located at Clontarf Beach and the other located on Parriwi Head. The transit bears approximately 065°/245° magnetic.
- 16.3 The RC or Sailing Manager may at its discretion vary the SIs to nominate a Clubhouse start line or Pumphouse start line.
- 16.4 The Clubhouse Pre-Start area is defined as the area between the start line and the extension of the D-Arm outer walkway (northern marina arm).
- 16.5 When the Clubhouse Start Line is in operation, no boat shall enter the Pre-Start Area before her Preparatory Signal unless transiting the area under motor.
- 16.6 The Pumphouse Pre-Start area is defined as the area between the start line and the extension of the A-Arm outer walkway (southern marina arm).
- 16.7 When the Pumphouse Start Line is in operation, no boat shall enter the Pre-Start Area before her Preparatory Signal unless transiting the area under motor.
- 16.8 Any boat observed to breach NOR 16.5 or 16.7 shall be awarded a 45% scoring penalty (SCP). This amends RRS 63.1.
- 17 CLUBHOUSE FINISH**
- 17.1 The Clubhouse Finish Line is a transit formed by aligning two orange triangles located adjacent to the MHYC Race Official's Box. The transit bears approximately 065°/245° magnetic and is illuminated after dark.
- 17.2 When finishing, boats are requested to centre their mainsail in order to assist in the identification of competitors. Boats that cannot be identified will be scored 'DNF'. This amends RRS 63.1.
- 17.3 After finishing and before lowering her sails a boat shall proceed immediately to the north of the extension of the D-Arm outer walkway (northern marina arm). When returning to a berth or mooring a boat shall not cross to the south of this transit unless under motor and with her sails stowed and any boat observed to breach this shall be awarded a 45% scoring penalty (SCP). This amends RRS 63.1.
- 17.4 Boats are reminded of their obligation under RRS 23 and in particular once finishing, to keep clear of boats that are still racing. A boat that is observed to interfere with a boat still racing or with the operation of the Clubhouse Finish Line may be disqualified. This amends RRS 63.1.

18 ON WATER START

- 18.1 Boats intending to race shall report to the Committee Vessel (CV) prior to their Warning signal, on starboard tack, with mainsail hoisted, to confirm their intention to race. Boats that cannot be identified may be scored Did Not Start (DNS).
- 18.2 An inner distance mark may be located near the CV and boats shall leave this mark on the same hand as the CV when starting. No boat shall pass between the distance mark and the CV.
- 18.3 The Race Committee may position a vessel or vessels, flying the MHYC burgee, on the start line extensions at the port and/or starboard end for the purpose of identifying boats OCS at the start.
- 18.4 Following a General Recall, the RC may change the order of divisional starts. This amends RRS 29.2.
- 18.5 Prior to her Preparatory Signal, a boat shall keep clear of the starting line and all boats about to start or which have started. Attention is drawn to RRS 23.
- 18.6 Unless otherwise specified in the Sailing Instructions, a boat shall not start later than 5 minutes after her starting signal. A boat doing so will be scored Did Not Start (DNS) without a hearing. This amends RRS 63.1 and A5.

19 ON WATER FINISH

- 19.1 The finish line will be as described in the Sailing Instructions.
- 19.2 Boats shall not pass through the finish line when the CV is on station, except when finishing.

20 RETIREMENT

- 20.1 Boats retiring from racing shall inform the Committee Vessel by hail or by VHF 72 at the earliest opportunity. Should this be impractical, boats shall advise the Sailing Office, in person or by telephone 9969 1244, as soon as practicable.
- 20.2 Unless specified otherwise in the Sailing Instructions, a boat which does not advise of its retirement within 60 minutes of retiring may be scored points equal to DNC. This amends RRS 63.1.

21 HANDICAPS

- 21.1 The following ORC Ratings will be applied for the 2021-2022 MHYC Inshore Series:
- a) For the Inshore Sprints Pointscore – Single Number Time on Time Windward/Leeward
- b) For the Inshore Series Spring, Summer and Annual Pointscores – Single Number Time on Time All Purpose
- 21.2 For races other than Pursuit Handicap races, boats will be assigned an arbitrary PHS handicap being a Time Correction Factor (TCF). A boat's elapsed time shall be multiplied by its TCF to obtain its corrected time for the race. A boat's corrected time shall be used to determine its place and after imposition of percentage penalties, if any, the boat with the lowest place shall be the winner. In determining an arbitrary handicap for a boat in its initial race or its first race in a new pointscore series, the RC may seek the assistance of the appropriate Divisional Representative or outside parties.
- 21.2 The RC shall document and use a consistent method to determine the PHS handicapping during a series. The selection of the reference boat(s) and the maximum shift in TCF's shall remain constant for the series.
- 21.3 The RC may at its absolute discretion review any boat's arbitrary handicap where they are of the opinion that due to anomaly, error or circumstance, the handicap is deemed unfair or unreasonable.
- 21.4 A boat may not seek redress in respect of the assignment of PHS and EHC handicaps. This amends RRS 62.1(a).

22 PURSUIT HANDICAP RACES

- 22.1 For Pursuit Handicap races, the following applies unless otherwise stated in the Sailing Instructions for the event.
- 22.2 The RC or its nominee will allocate a Start Number in whole minutes to a boat. This number will be a count up number as described in the relevant Sailing Instructions.
- 22.3 For Pursuit (Count Up Start) Races, a boat's Start Number is the time in minutes at which her allocated starting time appears in view on the start clock.
- 22.4 A boat is racing from her Preparatory Signal which is 4 minutes before her allocated Start Number.
- 22.5 A boat not racing shall stay well clear of the Start Line and stay outside of the pre-start area (see NOR 16.4 and 16.6). Attention is drawn to RRS 23.
- 22.6 Boats are advised that the RC may not record a boat that starts more than 5 minutes after her Start number as starting. This amends RRS 63.1.
- 22.7 There will be no recall signals. A boat recorded as OCS will be penalised 5 minutes plus the difference between her nominated start time and actual start time. This amends RRS 29.1.
- 22.8 Boats will be scored in the order of crossing the finishing line, including any penalties incurred under NOR 22.5, 22.6 & 22.7 and NOR 16 & 17 (if applicable).
- 22.9 The RC may, at its absolute discretion and at any time, review any boat's arbitrary handicap where it is of the opinion that due to anomaly, error or circumstance, the handicap is deemed unfair or unreasonable.

23 RACE RESULTS AND SERIES SCORES

- 23.1 Race results may be posted on the Official Notice Board and the MHYC website.

24 PROTESTS AND REQUESTS FOR REDRESS

- 24.1 Protest forms are available at the Sailing Office. Protests and requests for redress or reopening shall be delivered there within the appropriate time limit.
- 24.2 The protest time limit is 90 minutes after the last boat has finished the last race of the day or the race committee signals no more racing today, whichever is later.
- 24.3 Notices will inform competitors of hearings in which they are parties or named as witnesses.
- 24.4 Notices of protests by the race committee, technical committee or protest committee will be posted to inform boats under RRS 61.1(b).

25 SCORING AND AVERAGE POINTS

- 25.1 Scoring will be as specified in the Sailing Instructions for each event.
- 25.2 A boat which misses a race of any MHYC Series in which she is an entrant through competing in a State or National Championship or in any other Major Regatta or Series as endorsed by the MHYC Sailing Committee, shall be entitled to redress being average points.
- 25.3 Requests for average points shall be lodged in writing within 7 days of the event and accompanied by a copy of the result sheet of the event. The maximum number of requests for average points for boats competing in any series other than the CYCA Short Ocean Pointscore Series (SOPS) shall be limited to two (2) race days per series.
- 25.4 Boats competing in CYCA SOPS races conducted on the same day as MHYC Inshore ORC & PHS Annual Pointscore races will automatically have average points awarded for the MHYC Inshore race. Boats competing in CYCA SOPS races are not required to lodge a request for average points.
- 25.5 Points may be awarded at the next Sailing Committee meeting and shall be the average of points over the entire series in which the average points are awarded.
- 25.6 The calculation of average points will not include races where a redress of average points has already been awarded. The next point score race will be used. Average points will be rounded to one decimal place.

26 RUBBISH

- 26.1 Competitors shall not dispose rubbish into the water. Refer to RRS 47.

27 COMPETITOR'S RACE MANAGEMENT SCHEME

- 27.1 Each Boat competing in a Spring, Summer, Annual, Wednesday or Twilight Series is required to provide a minimum of two crew per annum to assist the MHYC Race Management Team.
- 27.2 Boats are invited to contact the Sailing Office early in the season with their preferred dates and a roster will be maintained by the Sailing Office.
- 27.3 Skippers are to advise the Sailing Office no later than two days prior to the event of their crew's name. They need to be ready to depart the marina two hours before the scheduled start time and will normally return by 1630 (although this can vary depending on the conditions). They should be adequately prepared for a day on the water. A light lunch and drinks will be provided.
- 27.4 A boat that is unable to compete in a scheduled Pointscore Race due to a crew member assisting with Race Management duties under the Race Management Scheme shall be entitled to apply to the Sailing Committee for average points. The application shall be lodged no later than two days prior to the event and supported by the boat's Divisional Representative. If awarded, average points shall be the average of points over the entire series in which the average points are awarded.
- 27.5 A boat that fails to provide a member of their regular crew capable of performing the tasks expected or failure of the crew to arrive in time or adequately prepared is a breach of NOR 27.1 and shall result in the boat being issued a 45% scoring penalty in that day's race or the next race in which the boat competes. This amends RRS 63.1.

28 MEDIA RIGHTS

- 28.1 By participating in an MHYC event, competitors automatically grant to the Club and its sponsors, the right in perpetuity to make, use and show, from time to time at their discretion, any still or motion pictures and live, taped or filmed television and other reproductions of the competitor during the period of the event without compensation.

29 DISCLAIMER OF LIABILITY

- 29.1 Competitors participate in MHYC events entirely at their own risk. See RRS 3, Decision to Race. The Organising Authority will not accept any liability for material damage or personal injury or death sustained in conjunction with or prior to, during, or after the event. Attention is drawn to Fundamental Rule 3 which states: **"The responsibility for a boat's decision to participate in a race or to continue racing is hers alone."**
- 29.2 By participating in a race under this Notice of Race, each member of the crew of a boat in such races agrees to be governed by the rules and to accept any penalties assessed there under or any other action as may be taken there under, subject to the appeal and review procedures as provided in the RRS as a final determination of any matter and agrees not to resort to a court or tribunal not provided herein with respect to such determination.
- 29.3 Competitors agree that if the owner/charterer or any person on the owner's/charterer's behalf requests the Race Committee or any officer, employee or volunteer of MHYC to arrange for special assistance because the boat has become disabled, or for any other reason, then the owner/charterer indemnifies MHYC and its officers, employees and agents in respect of any liability, cost or expense which may thereby be incurred.

RACE AND SERIES ENTRY FEES

** Block Entry includes race entry fee exemption for all MHYC Feature Events*

OCEAN SERIES (CAT 4)	Race Days	Casual	Casual (online)	Series	Member Series
Ocean Series Pointscore 7 Races <i>Includes race entry fee exemption for SSORC</i>	5	\$60	\$55	\$300	\$255
INSHORE SERIES (CAT 7)	Race Days	Casual	Casual (online)	Series	Member Series
Inshore ORC & PHS Annual Pointscore Block Entry * 24 Races (Inc. Spr./Sum./Sprints - ORC & PHS)	19	\$60	\$55	\$1140	\$969
Inshore IRC Annual Pointscore Block Entry * 20 Races (Inc. Spr./Sum./Sprints - IRC) <i>Race fee exempt if entered in Inshore ORC & PHS Block</i>	15	\$60	\$55	\$900	\$765
Inshore ORC & PHS Club Spring Pointscore 11 Races (Inc. Sprints)	9	\$60	\$55	\$540	\$459
Inshore IRC Spring Pointscore 11 Races (Inc. Sprints)	8	\$60	\$55	\$480	\$408
Inshore ORC & PHS Summer Pointscore 12 Races (Inc. Sprints – ORC & PHS)	10	\$60	\$55	\$600	\$510
Inshore IRC Summer Pointscore 9 Races (Inc. Sprints - IRC)	7	\$60	\$55	\$420	\$357
Inshore Sprint Series 10 Races (IRC / ORC / PHS)	5	\$60	\$55	\$300	\$255
ADAMS 10 SERIES (CAT 7)	Race Days	Casual	Casual (online)	Series	Member Series
Adams 10 Block Entry * 22 Races (Inc. Spr./Sum./Sprints/CCIS - OD & PHS)	17	\$60	\$55	\$1020	\$867
Adams 10 Annual Pointscore Block Entry * 17 Races (Inc. Spr./Sum./Sprints - OD & PHS)	12	\$60	\$55	\$720	\$612
Adams 10 Combined Clubs Inshore Pointscore 5 Races (OD & PHS)	5	\$60	\$55	\$300	\$255
Adams 10 Spring Pointscore 9 Races (Inc. Sprints - OD & PHS)	6	\$60	\$55	\$360	\$306
Adams 10 Summer Pointscore 8 Races (Inc. Sprints - OD & PHS)	6	\$60	\$55	\$360	\$306
Adams 10 Sprint Series 10 Races	5	\$60	\$55	\$300	\$255
FARR 40 SPRINT SERIES (CAT 7)	Race Days	Casual	Casual (online)	Series	Member Series
Farr 40 Sprint Series 10 Races	5	\$60	\$55	\$300	\$255
WINTER SERIES (CAT 7)	Race Days	Casual	Casual (online)	Series	Member Series
Winter Series Block Entry * 16 Races – Inc. Sprints, Pursuit & Leading Edge	12	\$60	\$55	\$720	\$612
Winter Sprint Series 8 Races	4	\$60	\$55	\$240	\$204
Winter Pursuit Series 4 Races	4	\$60	\$55	\$240	\$204
Leading Edge Series 4 Races	4	\$60	\$55	\$240	\$204

PACIFIC RIGGING WEDNESDAY NON-SPINNAKER SERIES (CAT 7)	Race Days	Casual	Casual (online)	Series	Member Series
Wednesday Series Block Entry * Includes Series 1, 2, 3 & 4	50	\$60	\$55	\$3000	\$2550
Wednesday Series 1	13	\$60	\$55	\$780	\$663
Wednesday Series 2	12	\$60	\$55	\$720	\$612
Wednesday Series 3	12	\$60	\$55	\$720	\$612
Wednesday Series 4	13	\$60	\$55	\$780	\$663
FLAGSTAFF MARINE THURSDAY TWILIGHT NON-SPINNAKER SERIES (CAT 7)	Race Days	Casual	Casual (online)	Series	Member Series
Thursday Twilight Series Block Entry * Includes Pre- and Post- Christmas Series	23	\$60	\$55	\$1380	\$1173
Thursday Twilight Series Pre Christmas Includes Twilight Women's Series	11	\$60	\$55	\$660	\$561
Thursday Twilight Series Post Christmas Includes Twilight Women's Series	12	\$60	\$55	\$720	\$612
Thursday Twilight Women's Series	6	\$60	\$55	\$360	\$306
FEATURE EVENT SERIES (CAT 7)	Race Days	Casual	Casual (online)	Series	Member Series
Feature Events Series Includes all Feature Races	9	\$60	\$55	\$540	\$459
Commodores 'Front Up' Cup	1	\$60	\$55		
Sydney Harbour Trek (&)	1				
7 Islands Race (#)	1	\$60	\$55		
Christmas Cup / Veterans Cup (&)	1				
January Cup / 2 Handed Cup (#)	1	\$60	\$55		
Chaos Cup & Bedlam Point Cup (&)	1				
ANZAC Day 'Two Up' Cup	1	\$60	\$55		
Welcome to Winter	1				
Christmas in July (&)	1	\$60	\$55		
Jeanneau Cup Series Includes 2 selected Races (#) plus the Jeanneau Cup Islands Race on 4 February	3	\$60	\$55	\$180	\$153
Beneteau Race Series Includes 3 selected Races (&)	3	\$60	\$55	\$180	\$153
SAILING 10 PASS	Race Days	Casual	Casual (online)	Series	Member Series
Casual Race in Any Series Pre-Paid - 10 Races (10% discount for Members)	10			\$600	\$540

MHYC RACE SERIES

Middle Harbour Yacht Club offers a diverse racing program with a wide range of competitions to suit different boats and interests.

Saturday Racing...

OCEAN SERIES

The Ocean Series Pointscore includes 7 races between November and March. IRC is the principal handicap system along with ORC and PHS scores. Category 4 offshore safety is required. Entrants often use this series in preparation for the major offshore races such as the Sydney to Hobart.

INSHORE SERIES

MHYC is Sydney's Premier Inshore Yacht Racing Club and offers an extensive program of races inside our magnificent Harbour.

The Inshore Annual Pointscore includes 24 races from September to April with a 14 inshore passage races and 10 sprint (windward-leeward) races. All races are started and finished on the water. Handicapping is ORC & PHS. Six of the Sydney Harbour Combined Clubs Inshore Series races are included in the MHYC pointscore. For boats that are unable to sail for the full season, there are 11 races in the Spring Pointscore ending in December and 12 races in the Summer Pointscore. Alternatively, just pick and choose the racing days that suit and enter as a casual.

The Inshore IRC Annual Pointscore offers 20 Races (10 passage and 10 sprints) sailed in conjunction with the Inshore Annual Pointscore for ORC & PHS boats.

If the faster pace of windward leeward racing is more appealing, MHYC's Inshore Sprint Series is conducted on 5 days from September to April to complete 10 races scored on IRC, ORC, PHS and One-Design.

ADAMS 10 SERIES

MHYC boasts an active and competitive fleet of these affordable 30 footers. The One Design pointscore is hotly contested with results for PHS as well. 22 races are scheduled from September to April with a 14 inshore passage races and 8 sprint (windward-leeward) races. The series is also broken down to Spring, Summer and Sprint sub-series.

The Adams 10 Combined Clubs Inshore Pointscore offers a separate series for those boats who like competing in a large mixed fleet division of the Sydney Harbour Combined Clubs Inshore Series.



FARR 40 SPRINT SERIES

The Farr 40s are another active One Design class at MHYC. The Farr 40 Sprint Series includes 10 races and will also form part of the class One Design Trophy regattas.

FEATURE EVENT SERIES

There are 9 MHYC Feature Events held each year. Popular with the "occasional" racers and visitors from other clubs, an interesting series of courses are offered including the Seven Islands Race and the Chaos Cup. Boats can sail with or without spinnaker.

Midweek Racing...

PACIFIC RIGGING WEDNESDAY NON-SPINNAKER SAILING

The MHYC Wednesday Series attracts a regular cohort of sailors for their weekly fix of sailing and socialising. As important as the racing is the after-sail barbeque, quiz, raffle and prizegiving. There is a bottle of rum for the first boat home in each division! 50 races are scheduled throughout the year and entries are invited in either of the 4 series or as a casual. Courses take in all parts of the outer Harbour and the non-spinnaker format makes it easier to sail with fewer or less experienced crew.



FLAGSTAFF MARINE THURSDAY TWILIGHT

Thursday evening Twilight Sailing at MHYC is conducted during daylight saving with starts at 6pm. A short sail in the late afternoon during the warmer months is good for the soul and the fun continues at the club after sailing for dinner and drinks and prizegiving. Twilights are broken into Pre- and Post-Christmas Series and a Twilight Women's Series race is held each month.

Winter Sailing...

The MHYC Winter program, running from May to August, includes pursuit and sprint racing. There are 4 races in each of the Winter Pursuit Series and Leading Edge Series. Spinnaker and non-spinnaker entries are invited in these relaxed series which take advantage of the (usually) lighter breezes at this time of year. Four sprint days with 2 races each day keep the competitive juices flowing for the keen racers.



Annual Skippers Briefing

The Skippers Briefing is held in mid-September each year. This is an important event that must be attended by a representative from each boat that races in any MHYC series. The briefing covers key sections and any changes to the Season Notice of Race and Sailing Instructions, structure of the racing program and safety. NSW Maritime also provide a safety briefing.



Skippers and Crew Meet & Greet

For skippers looking for crew and crew looking for a regular sail, this is a great opportunity for skippers to outline their sailing program for the year to meet crew with different interests and levels of experience. The 2022 Skippers and Crew Meet & Greet will be held on September 1.

Questions?

If you have any questions about the MHYC Sailing Program, email sailing@mhyc.com.au

HANDICAPPING AT MHYC

Middle Harbour Yacht Club uses a number of different handicapping systems to provide enjoyable and competitive racing for its members who sail a variety of different boats.

IRC

The International Rating Certificate is a rating rule to handicap different designs of keelboats allowing them to race together. A rating is not altered between races according to the individual boat's performance but is based on the physical measurements of the boat.

IRC handicapping is used for the premier classes in MHYC's major regattas, the Sydney Short Offshore Racing Championship and Sydney Harbour Regatta. It is also used for the MHYC Ocean Series and Inshore Series.

ORC Club

ORC Club uses the Velocity Prediction Program (VPP) to rate boats of different characteristics. It relies on the measurement of a boat and its sails, affecting their theoretical speed. With ORC Club, a boat's handicap remains constant from week to week.

ORC Club is a simplified and less expensive version of the ORC International rating system (ORCi) which is based on a complete boat measurement. It is designed for Club-level racing up to national championship level. Both systems having the same rating and can be scored together in any races.

ORC Club handicapping is used for the Sydney Harbour Combined Clubs Inshore Series, the MHYC Inshore and Sprint Series, and the Women's Twilight Series.

OD

One Design racing is where all boats are identical or similar in design. Class-legal boats race each other without any handicap calculations, start at the same time, and the winner is the first to cross the finish line. One Design results are used for the Sydney Harbour Regatta and for Adams 10, J/24 and Farr 40 classes in the MHYC Inshore Series and/or Sprint Series, and for class sanctioned regattas.

PHS

The Performance Handicap System adjusts a boat's handicap after each race based on the performance of that boat relative to other boats in that fleet.

Entrants in each race have a starting handicap based on the boat's performance history. When the results are calculated for that race, an algorithm generates a new handicap for each boat to be applied in the next race.

PHS rewards consistent performance improvements and levels the playing field for older boats and less experienced crews. PHS is used for the Sydney Harbour Combined Clubs Inshore Series and for the MHYC Inshore and Sprint Series.

Pursuit

Pursuit Handicaps are generated through the Performance Handicap System and provide a time (in whole minutes) after the race start at which a boat is permitted to start. MHYC uses PHS to handicap boats based on their performance in previous races. It is designed to provide greater opportunity for all boats to achieve a race win or high placing and keep competition interesting for all the fleet.

Pursuit Handicaps are used on a progressive basis for the Pacific Rigging Wednesday Non-Spinnaker Series and the Flagstaff Marine Thursday Twilight Non-Spinnaker Series. Pursuit Handicaps are allocated on a race-by-race basis for MHYC Feature Events and Charity and Corporate Regattas.

MHYC OCEAN POINTSCORE SERIES

Category 4 – Results on IRC, ORC & PHS for Divisions 1 & 2

SCHEDULE OF RACES

RACE	DATE	START TIME	CAT.	RACE FORMAT	INFORMATION
1	Saturday, 5 November 2022	1200	4	Short Ocean Pointscore (SOPS)	CYCA Sailing Instructions
2	Saturday, 26 November 2022	1000	4	Ocean Pointscore (SSORC Passage)	MHYC Event Sailing Instructions
3 4 5	Sunday, 27 November 2022	1100	4	Windward-Leeward (SSORC Laid Marks)	MHYC Event Sailing Instructions
6	Saturday, 4 February 2023	1200	4	Short Ocean Pointscore (SOPS)	CYCA Sailing Instructions
7	Saturday, 11 March 2023	1200	4	Short Ocean Pointscore (SOPS)	CYCA Sailing Instructions

**OCEAN POINTSCORE SERIES
SAILING INSTRUCTIONS****1 RULES**

1.1 Refer to NOR 1 and 2.

1.2 Attention is drawn to NOR 11 - *Boats must comply with the following AS Special Regulations Part 1 Section 2 - Category 4***2 SCHEDULE OF RACES**

2.1 Racing is scheduled as detailed in the Schedule of Races.

3 RACE DOCUMENTS

3.1 Attention is drawn to NOR 5.1

In any race which is conducted by another Club as a joint race for both that Club and MHYC, MHYC entrants will race under the conducting Club's SIs. Any decision affecting that race made by the RC or Protest Committee of the conducting Club shall apply to the MHYC event, unless otherwise decided by the MHYC RC.

4 SCORING

4.1 The Low Point System, Appendix A of the RRS shall apply.

4.2 A casual race entrant will not receive a series score. This amends RRS A2.2.

4.3 Abandoned races will not be re-sailed.

4.4 Seven (7) races are scheduled and three (3) races are required to be completed to constitute a series. One (1) excluded score will apply after every four (4) completed races.

5 DISCLAIMER OF LIABILITY

5.1 Refer to NOR 29.

5.2 Attention is drawn to Fundamental Rule 3 which states: *"The responsibility for a boat's decision to participate in a race or to continue racing is hers alone".*

ORC & PHS INSHORE ANNUAL / SPRING / SUMMER SERIES POINTSCORE

Category 7 – Results on ORC & PHS for Divisions 1, 2, 3 & 12 (Combined Divisions 1 & 2)

IRC INSHORE ANNUAL / SPRING / SUMMER SERIES POINTSCORE

Category 7 – Results on IRC for Divisions 1, 2 & 12 (Combined Divisions 1 & 2)

ADAMS 10 ANNUAL / SPRING / SUMMER SERIES POINTSCORE**ADAMS 10 COMBINED CLUBS INSHORE SERIES POINTSCORE**

Category 7 – Results on One Design & PHS

SCHEDULE OF RACES

RACE	DATE	START	ORC/PHS	IRC	Adams 10	Farr 40	SIs
1	Saturday, 10 September 2022	1250	Spring	Spring	CCIS	-	CCIS
2	Saturday, 17 September 2022	1300	Spring	Spring	Spring	-	Inshore
3 4	Saturday, 24 September 2022	1300	Sprints	Sprints	Sprints	Sprints	Sprints
5	Saturday, 15 October 2022	1250	Spring	Spring	Spring	-	CCIS
6	Saturday, 22 October 2022	1300	Spring	Spring	Spring	-	Inshore
7 8	Saturday, 29 October 2022	1300	Sprints	Sprints	Sprints	Sprints	Sprints
9	Saturday, 5 November 2022	1300	Spring	-	Spring	-	Inshore
10	Saturday, 12 November 2022	1250	Spring	Spring	CCIS	-	CCIS
11 12	Saturday, 19 November 2022	1300	Sprints	Sprints	Sprints	Sprints	Sprints
13	Saturday, 3 December 2022	1250	Summer	-	Summer	-	CCIS
14	Saturday, 17 December 2022	1250	Summer	Summer	CCIS	-	CCIS
15 16	Saturday, 21 January 2023	1300	Sprints	Sprints	Sprints	Sprints	Sprints
17	Saturday, 28 January 2023	1250	Summer	Summer	CCIS	-	CCIS
18	Saturday, 4 February 2023	1300	Summer	-	-	-	Inshore
19	Saturday, 18 February 2023	1300	Summer	Summer	Summer	-	Inshore
20	Saturday, 11 March 2023	1300	Summer	-	Summer	-	Inshore
21	Saturday, 18 March 2023	1250	Summer	Summer	CCIS	-	CCIS
22	Saturday, 25 March 2023	1300	Summer	Summer	Summer	-	Inshore
23 24	Saturday, 1 April 2023	1300	Sprints	Sprints	Sprints	Sprints	Sprints

* Race Numbers for Inshore Annual Series

MHYC INSHORE SAILING INSTRUCTIONS

1 RULES

1.1 Refer to NOR 1 and 2.

2 SCHEDULE OF RACES

2.1 Racing is scheduled as per the Schedule of Races for each Pointscore Series.

3 CLASS FLAGS & DIVISIONS

3.1 Class flags will be:

CLASS / DIVISION	CLASS FLAG
Division 12 (Combined Divs 1 & 2)	Code Flag 'K'
Division 3	Code Flag 'F'
Adams 10	Adams 10 Insignia on White Background

4 THE COURSES

4.1 The course to be sailed will be displayed on a Course Board on the race committee, as shown below and will be designated either "COURSE" (Fig (i)) or "NAVAL" (Fig (ii))



Fig (i)



Fig (ii)

4.2 For courses designated "COURSE" the course to be sailed shall be from those listed in the SIs.

4.3 For courses designated "NAVAL" the course to be sailed for each division shall be the course number shown on the chart below opposite the wind direction and Naval Numeral indicator.

NAVAL COURSE CHART						
Wind	"NAVAL"	Start Line	A10	Div.12	Div.3	Finish Line
N	1	CC	2	1	3	SC
N	2	CC	2	2	3	SC
NNE	3	HB	5	4	6	SC
NNE	4	HB	5	5	6	SC
NE	5	HB	8	7	9	SC
NE	6	HB	10	9	10	SC
ENE	7	HB	12	11	12	SC/CP
E	8	HB/GP	13	13	14	SC/CP
SE	9	HB/GP	17	16	17	WB
S	10	NH	18	18	19	WB
S	11	NH	19	18	19	WB
SW	12	SC	20	20	21	HB
W	13	SC/CP	23	22	23	HB
NW	14	CC	25	24	25	HB
NW	15	CC	25	24	26	HB
CC = Camp Cove / CP = Cannae Point / GP = Grotto Point / HB = Hunters Bay NH = North Harbour / SC = Spring Cove / WB = Watsons Bay						

- 4.4 When the race committee displays Code Flag "S" at the start line, the course for each division is shortened and boats shall round the mark prefixed (*) in the course description on the required side and proceed directly to the finish.
- 4.5 If the race committee shortens any course in accordance with RRS 32 for specific divisions only, the divisional flag for those divisions for which the course is to be shortened will be flown below Code Flag "S".

5 THE START

- 5.1 The start will be an On Water Start in accordance with NOR 18.
- 5.2 Boats intending to race shall report to the committee vessel prior to their warning signal, on starboard tack, with mainsail hoisted, to confirm their intention to race. Boats that cannot be identified may be scored 'DNS'.
- 5.3 The starting line will be between a staff or halyard displaying an orange flag on the committee vessel and the course side of the start mark.
- 5.4 The first Warning Signal for MHYC Inshore Series races shall not be made before 1255hrs. The first Warning Signal for Combined Clubs Inshore Series races shall not be made before 1250hrs.
- 5.5 The RC may combine a divisional start with another.
- 5.6 Prior to her Preparatory Signal, a boat shall keep clear of the starting line and all boats about to start or which have started. Attention is drawn to RRS 23.
- 5.7 When the race committee determines the Clubhouse or Pumphouse Start and Clubhouse Finish is to be used (in accordance with NOR 16 and 17), Code Flag "O" will be displayed from the Club Race Officials Box not less than one hour before the scheduled start time of the race or first division.

6 THE FINISH

- 6.1 The finishing line will be between a staff or halyard displaying a blue flag on the committee vessel and the course side of the finish mark.
- 6.2 When the race committee determines the Clubhouse finish line to be used, the race committee will display Code Flag "O". This signal may be displayed at any time with 3 long sound signals. Boats shall sail the course until the final mark then proceed to the Clubhouse and finish in accordance with NOR 17.

7 TIME LIMITS

- 7.1 Unless otherwise prescribed, the time limit for each division shall be 3 hours 30 minutes or 30 minutes after the first boat in that division finishes whichever is later. Only those boats finishing within the time limit shall rank as finishers. This amends RRS 35.
- 7.2 Boats retiring from racing comply with NOR 20.

8 SCORING

- 8.1 The Low Point System, Appendix A of the RRS including A5.3 shall apply.
- 8.2 A casual race entrant will not receive a series score. This amends RRS A2.2.
- 8.3 Abandoned races will not be re-sailed.
- 8.4 Inshore Annual ORC & PHS Pointscore Series
Twenty four (24) races are scheduled and ten (10) races are required to be completed to constitute a series. One (1) excluded score will apply after every four (4) completed races, up to a maximum of six (6) excluded scores.
- 8.5 Inshore Spring ORC & PHS Pointscore Series
Twelve (12) races are scheduled and five (5) races are required to be completed to constitute a series. One (1) excluded score will apply after every four (4) completed races, up to a maximum of three (3) excluded scores.

- 8.6 Inshore Summer ORC & PHS Pointscore Series
Twelve (12) races are scheduled and five (5) races are required to be completed to constitute a series. One (1) excluded score will apply after every four (4) completed races, up to a maximum of three (3) excluded scores.
- 8.7 Inshore Annual IRC Pointscore Series
Twenty (20) races are scheduled and nine (9) races are required to be completed to constitute a series. One (1) excluded score will apply after every four (4) completed races, up to a maximum of five (5) excluded scores.
- 8.8 Inshore Spring IRC Pointscore Series
Eleven (11) races are scheduled and five (5) races are required to be completed to constitute a series. One (1) excluded score will apply after every four (4) completed races, up to a maximum of two (2) excluded scores.
- 8.9 Inshore Summer IRC Pointscore Series
Nine (9) races are scheduled and four (4) races are required to be completed to constitute a series. One (1) excluded score will apply after every four (4) completed races, up to a maximum of two (2) excluded scores.
- 8.10 Adams 10 Annual Pointscore Series
Seventeen (17) races are scheduled and eight (8) races are required to be completed to constitute a series. One (1) excluded score will apply after every four (4) completed races, up to a maximum of four (4) excluded scores.
- 8.11 Adams 10 Spring Pointscore Series
Nine (9) races are scheduled and four (4) races are required to be completed to constitute a series. One (1) excluded score will apply after every four (4) completed races, up to a maximum of two (2) excluded scores.
- 8.12 Adams 10 Summer Pointscore Series
Eight (8) races are scheduled and three (3) races are required to be completed to constitute a series. One (1) excluded score will apply after every four (4) completed races, up to a maximum of two (2) excluded scores.
- 8.13 Adams 10 Combined Clubs Inshore Series
Five (5) races are scheduled and two (2) races are required to be completed to constitute a series. One (1) excluded score will apply after every four (4) completed races, up to a maximum of one (1) excluded score.

9 PRIZES

- 9.1 Weekly divisional prizes may be awarded at a post-race presentation. Prizes not collected shall be forfeited.
- 9.2 Series awards will be awarded at the Annual Presentation.

10 DISCLAIMER OF LIABILITY

- 10.1 Refer to NOR 29
- 10.2 Attention is drawn to Fundamental Rule 3 which states: *“The responsibility for a boat’s decision to participate in a race or to continue racing is hers alone”.*

INSHORE COURSE DESCRIPTIONS

INSHORE & ADAMS 10 ANNUAL, SPRING & SUMMER SERIES

COURSE NOTES:

- 1) All marks are to be rounded or passed to STARBOARD except those suffixed with the letter (P) which shall be rounded or passed to PORT.
- 2) For shortened course mark (*) refer to sailing instructions 4.4 & 4.5.
- 3) Division 3 omit marks designated (x).

COURSE 1 – NORTH (approx. 13.9 nm)

- | | |
|-------------------------------------|----------------------------------|
| 1. Start Camp Cove | 8. AS Mark Manly East |
| 2. AS Mark Manly West | 9. MH Inflatable South Reef (P) |
| 3. AS Mark Manly East | 10. AS Mark Cannae Point |
| 4. AS Mark Cannae Point | 11. MH Inflatable South Reef (P) |
| 5. MH Inflatable Grotto Point (P) | 12. AS Mark Cannae Point |
| 6. MH Inflatable South Reef (P) (*) | 13. MH Inflatable South Reef (P) |
| 7. AS Mark Manly West | 14. Finish Spring Cove |

COURSE 2 — NORTH (approx. 12.7 nm)

- | | |
|-------------------------------------|-------------------------------------|
| 1. Start Camp Cove | 7. (x) AS Mark Manly West |
| 2. AS Mark Manly West | 8. (x) AS Mark Manly East |
| 3. AS Mark Manly East | 9. (x) MH Inflatable South Reef (P) |
| 4. AS Mark Cannae Point | 10. AS Mark Cannae Point |
| 5. MH Inflatable Grotto Point (P) | 11. MH Inflatable South Reef (P) |
| 6. MH Inflatable South Reef (P) (*) | 12. Finish Spring Cove |

COURSE 3 — NORTH (approx. 11.9 nm)

- | | |
|-----------------------------|--------------------------|
| 1. Start Camp Cove | 5. AS Mark Manly West |
| 2. AS Mark Manly West | 6. AS Mark Manly East |
| 3. AS Mark Manly East | 7. AS Mark Edwards Beach |
| 4. AS Mark Nielsen Park (*) | 8. Finish Spring Cove |

COURSE 4 – NOR NOR EAST (approx. 15.3 nm)

- | | |
|------------------------------|------------------------------|
| 1. Start Hunters Bay | 7. AS Mark Manly East |
| 2. AS Mark Manly West | 8. AS Mark Edwards Beach (*) |
| 3. AS Mark Manly East | 9. AS Mark Manly West |
| 4. MH Inflatable South Reef | 10. AS Mark Manly East |
| 5. MH Inflatable Chowder Bay | 11. AS Mark Lady Bay |
| 6. AS Mark Manly West | 12. Finish Spring Cove |

COURSE 5 — NOR NOR EAST (approx. 14.0 nm)

- | | |
|------------------------------|-------------------------------|
| 1. Start Hunters Bay | 7. AS Mark Manly East (*) |
| 2. AS Mark Manly West | 8. AS Mark Edwards Beach |
| 3. AS Mark Manly East | 9. AS Mark Cannae Point |
| 4. MH Inflatable South Reef | 10. MH Inflatable South Reef |
| 5. MH Inflatable Chowder Bay | 11. MH Inflatable Chowder Bay |
| 6. AS Mark Manly West | 12. Finish Spring Cove |

COURSE 6 — NOR NOR EAST (approx. 10.2 nm)

- | | |
|----------------------------------|------------------------------|
| 1. Start Hunters Bay | 6. AS Mark Cannae Point |
| 2. AS Mark Manly West | 7. MH Inflatable South Reef |
| 3. AS Mark Manly East | 8. MH Inflatable Chowder Bay |
| 4. MH Inflatable South Reef | 9. Finish Spring Cove |
| 5. MH Inflatable Chowder Bay (*) | |

COURSE 7 — NORTH EAST (approx. 15.4 nm)

- | | |
|----------------------------------|------------------------------|
| 1. Start Hunters Bay | 7. AS Mark East Channel |
| 2. AS Mark Cannae Point | 8. MH Inflatable Chowder Bay |
| 3. MH Inflatable Chowder Bay | 9. AS Mark Cannae Point |
| 4. AS Mark Cannae Point | 10. AS Mark Obelisk Bay |
| 5. MH Inflatable Chowder Bay (*) | 11. Finish Spring Cove |
| 6. AS Mark Cannae Point | |

COURSE 8 — NORTH EAST (approx. 14.7 nm)

- | | |
|----------------------------------|----------------------------------|
| 1. Start Hunters Bay | 6. MH Inflatable Manly Point (P) |
| 2. AS Mark Cannae Point | 7. AS Mark Edwards Beach |
| 3. MH Inflatable Chowder Bay | 8. MH Inflatable Manly Point (P) |
| 4. AS Mark Cannae Point | 9. AS Mark Edwards Beach |
| 5. MH Inflatable Chowder Bay (*) | 10. Finish Spring Cove |

COURSE 9 — NORTH EAST (approx. 13.2 nm)

- | | |
|------------------------------|----------------------------------|
| 1. Start Hunters Bay | 6. MH Inflatable Chowder Bay (*) |
| 2. AS Mark Cannae Point | 7. AS Mark Cannae Point |
| 3. AS Mark East Channel | 8. AS Mark East Channel |
| 4. MH Inflatable Chowder Bay | 9. MH Inflatable Chowder Bay |
| 5. AS Mark Cannae Point | 10. Finish Spring Cove |

COURSE 10 — NORTH EAST (approx. 12.1 nm)

- | | |
|----------------------------------|-------------------------------------|
| 1. Start Hunters Bay | 5. MH Inflatable Chowder Bay |
| 2. AS Mark Cannae Point | 6.(x) MH Inflatable Manly Point (P) |
| 3. MH Inflatable Chowder Bay (*) | 7.(x) AS Mark Edwards Beach |
| 4. MH Inflatable Manly Point (P) | 8. Finish Spring Cove |

COURSE 11 — EAST NORTH EAST (approx. 14.4 nm)

- | | |
|----------------------------------|---------------------------------------|
| 1. Start Hunters Bay | 6. MH Inflatable North Head (P) |
| 2. AS Mark Cannae Point | 7. AS Mark Taylors Bay (*) |
| 3. MH Inflatable Obelisk Bay (P) | 8. MH Inflatable North Head (P) |
| 4. MH Inflatable North Head (P) | 9. MH Inflatable Obelisk Bay (P) |
| 5. MH Inflatable Obelisk Bay (P) | 10. Finish Spring Cove / Cannae Point |

COURSE 12 — EAST NORTH EAST (approx. 12.0 nm)

- | | |
|----------------------------------|---------------------------------------|
| 1. Start Hunters Bay | 6. MH Inflatable North Head (P) |
| 2. AS Mark Cannae Point | 7. MH Inflatable Obelisk Bay (P) (*) |
| 3. MH Inflatable Obelisk Bay (P) | 8. (x) MH Inflatable North Head (P) |
| 4. MH Inflatable North Head (P) | 9. (x) MH Inflatable Obelisk Bay (P) |
| 5. MH Inflatable Obelisk Bay (P) | 10. Finish Spring Cove / Cannae Point |

COURSE 13 — EAST (approx. 12.7 nm)

- | | | | |
|----|----------------------------------|-----|-----------------------------------|
| 1. | Start Hunters Bay / Grotto Point | 7. | AS Mark Edwards Beach (*) |
| 2. | MH Inflatable North Head (P) | 8. | MH Inflatable North Head (P) |
| 3. | AS Mark Rocky Point | 9. | AS Mark Rocky Point |
| 4. | AS Mark Edwards Beach | 10. | AS Mark Edwards Beach |
| 5. | MH Inflatable North Head (P) | 11. | Finish Spring Cove / Cannae Point |
| 6. | AS Mark Rocky Point | | |

COURSE 14 — EAST (approx. 9.8 nm)

- | | | | |
|----|----------------------------------|-------|-----------------------------------|
| 1. | Start Hunters Bay / Grotto Point | 6. | AS Mark Grotto Point (*) |
| 2. | MH Inflatable North Head (P) | 7.(x) | MH Inflatable North Head (P) |
| 3. | AS Mark Rocky Point | 8.(x) | AS Mark Grotto Point |
| 4. | AS Mark Edwards Beach | 9. | Finish Spring Cove / Cannae Point |
| 5. | MH Inflatable North Head (P) | | |

COURSE 15 — EAST SOUTH EAST (approx. 12.9nm)

- | | | | |
|----|----------------------------------|--------|-----------------------|
| 1. | Start Hunters Bay / Grotto Point | 7. | AS Mark Lady Bay |
| 2. | AS Mark Lady Bay | 8. | AS Mark Rocky Point |
| 3. | AS Mark Rose Bay | 9. | AS Mark Edwards Beach |
| 4. | AS Mark Chowder Bay North | 10.(x) | AS Mark Lady Bay |
| 5. | AS Mark Rocky Point | 11.(x) | AS Mark Grotto Point |
| 6. | AS Mark Edwards Beach (*) | 12. | Finish Camp Cove |

COURSE 16 — SOUTH EAST (approx. 12.6 nm)

- | | | | |
|----|----------------------------------|-----|-------------------------|
| 1. | Start Hunters Bay / Grotto Point | 7. | AS Mark Taylor Bay |
| 2. | AS Mark East Channel | 8. | AS Mark Rose Bay |
| 3. | AS Mark Obelisk Bay | 9. | AS Mark Obelisk Bay (*) |
| 4. | AS Mark East Channel | 10. | AS Mark East Channel |
| 5. | MH Inflatable Chowder Bay (P) | 11. | AS Mark Grotto Point |
| 6. | AS Mark Rose Bay | 12. | Finish Watsons Bay |

COURSE 17 — SOUTH EAST (approx. 11.0 nm)

- | | | | |
|----|----------------------------------|-------|----------------------|
| 1. | Start Hunters Bay / Grotto Point | 6. | AS Mark Rose Bay |
| 2. | AS Mark East Channel | 7.(x) | AS Mark Obelisk Bay |
| 3. | MH Inflatable Chowder Bay (P) | 8.(x) | AS Mark East Channel |
| 4. | AS Mark Rose Bay | 9. | AS Mark Obelisk Bay |
| 5. | AS Mark Chowder Bay North (*) | 10. | Finish Watsons Bay |

COURSE 18 — SOUTH (approx. 13.5 nm)

- | | | | |
|----|-------------------------|----|----------------------|
| 1. | Start North Harbour | 6. | AS Mark East Channel |
| 2. | AS Mark East Channel | 7. | AS Mark Manly West |
| 3. | AS Mark Obelisk Bay | 8. | AS Mark Manly East |
| 4. | AS Mark Rose Bay | 9. | Finish Watsons Bay |
| 5. | AS Mark Obelisk Bay (*) | | |

COURSE 19 — SOUTH (approx. 11.3 nm)

- | | | | |
|-------|----------------------|----|--------------------------|
| 1. | Start North Harbour | 5. | AS Mark East Channel (*) |
| 2. | AS Mark East Channel | 6. | AS Mark Manly West |
| 3.(x) | AS Mark Rose Bay | 7. | AS Mark Manly East |
| 4. | AS Mark Obelisk Bay | 8. | Finish Watsons Bay |

COURSE 20 — SOUTH WEST (approx. 12.0 nm)

- | | | | |
|----|--------------------------------|-----|--------------------------------|
| 1. | Start Spring Cove | 7. | AS Mark Edwards Beach |
| 2. | AS Mark Edwards Beach | 8. | AS Mark Cannae Point (*) |
| 3. | AS Mark Cannae Point | 9. | MH Inflatable Grotto Point (P) |
| 4. | MH Inflatable Grotto Point (P) | 10. | MH Inflatable South Reef (P) |
| 5. | MH Inflatable South Reef (P) | 11. | MH Inflatable Manly Point (P) |
| 6. | MH Inflatable Manly Point (P) | 12. | Finish Hunters Bay |

COURSE 21 — SOUTH WEST (approx. 10.5 nm)

- | | | | |
|-------|--------------------------------|-------|-----------------------------------|
| 1. | Start Spring Cove | 7. | MH Inflatable Manly Point (P) (*) |
| 2. | AS Mark Edwards Beach | 8. | MH Inflatable Grotto Point (P) |
| 3. | AS Mark Manly West | 9.(x) | MH Inflatable South Reef (P) |
| 4. | AS Mark Manly East | 10. | MH Inflatable Manly Point (P) |
| 5. | MH Inflatable Grotto Point (P) | 11. | Finish Hunters Bay |
| 6.(x) | MH Inflatable South Reef (P) | | |

COURSE 22 — WEST (approx. 13.8 nm)

- | | | | |
|----|------------------------------------|-----|---------------------------------|
| 1. | Start Spring Cove / Cannae Point | 7. | MH Inflatable Edwards Beach (P) |
| 2. | MH Inflatable Edwards Beach (P) | 8. | MH Inflatable South Reef (P) |
| 3. | MH Inflatable South Reef (P) | 9. | MH Inflatable Cannae Point (P) |
| 4. | MH Inflatable Cannae Point (P) | 10. | MH Inflatable Edwards Beach (P) |
| 5. | MH Inflatable Edwards Beach (P) | 11. | MH Inflatable Cannae Point (P) |
| 6. | MH Inflatable Cannae Point (P) (*) | 12. | Finish Hunters Bay |

COURSE 23 — WEST (approx. 12.3 nm)

- | | | | |
|----|----------------------------------|-------|------------------------------------|
| 1. | Start Spring Cove / Cannae Point | 6. | MH Inflatable Cannae Point (P) (*) |
| 2. | MH Inflatable Edwards Beach (P) | 7.(x) | MH Inflatable Edwards Beach (P) |
| 3. | MH Inflatable South Reef (P) | 8.(x) | MH Inflatable Cannae Point (P) |
| 4. | MH Inflatable Cannae Point (P) | 9. | Finish Hunters Bay |
| 5. | MH Inflatable Edwards Beach (P) | | |

COURSE 24 — NORTH WEST (approx. 13.6 nm)

- | | | | |
|----|----------------------------|-----|-----------------------------|
| 1. | Start Camp Cove | 7. | MH Inflatable Grotto Point |
| 2. | MH Inflatable Grotto Point | 8. | AS Mark Eastern Channel (*) |
| 3. | AS Mark Eastern Channel | 9. | MH Inflatable Grotto Point |
| 4. | MH Inflatable Grotto Point | 10. | AS Mark Cannae Point |
| 5. | AS Mark Cannae Point | 11. | AS Mark Lady Bay |
| 6. | AS Mark Eastern Channel | 12. | Finish Hunters Bay |

COURSE 25 — NORTH WEST (approx. 13.3 nm)

- | | | | |
|----|-----------------------------|--------|----------------------------|
| 1. | Start Camp Cove | 7. | MH Inflatable Grotto Point |
| 2. | MH Inflatable Grotto Point | 8. | AS Mark Eastern Channel |
| 3. | AS Mark Eastern Channel | 9.(x) | MH Inflatable Grotto Point |
| 4. | MH Inflatable Grotto Point | 10.(x) | AS Mark Eastern Channel |
| 5. | AS Mark Cannae Point | 11. | Finish Hunters Bay |
| 6. | AS Mark Eastern Channel (*) | | |

COURSE 26 — NORTH WEST (approx. 10.3 nm)

- | | | | |
|----|----------------------------|-----|----------------------------|
| 1. | Start Camp Cove | 6. | AS Mark Lady Bay (*) |
| 2. | MH Inflatable Grotto Point | 7. | MH Inflatable Grotto Point |
| 3. | AS Mark Cannae Point | 8. | AS Mark Cannae Point |
| 4. | AS Mark Lady Bay | 9. | AS Mark Lady Bay |
| 5. | MH Inflatable Grotto Point | 10. | Finish Hunters Bay |

COURSE 27 – WINDWARD LEEWARD

COURSE	COURSE DESCRIPTION (All marks to Port)
W1	Start – 1 – Finish
W2	Start – 1 – 2 – 1 – Finish
W3	Start – 1 – 2 – 1 – 2 – 1 – Finish
W4	Start – 1 – 2 – 1 – 2 – 1 – 2 – 1 – Finish



- 1) Mark 1 will be an orange or yellow inflatable buoy located approximately 0.6 to 1.2 nm to Windward of the Start/Finish Line.
- 2) Mark 2 will be an orange or yellow inflatable buoy located approximately 0.1 nm to Windward of the Start/Finish Line.
- 3) The Course to be sailed (W1, 2, 3 or 4) will be displayed prior to or with the Division Warning Signal.
- 4) The bearing to Mark 1 may be displayed prior to or with the Warning Signal.



COURSE 28 – WINDWARD LEEWARD

Refer to MHYC Inshore Sprint Sailing Instructions.

MHYC INSHORE SPRINT SERIES

Category 7 - Results on IRC, ORC & PHS for Divisions 1, 2, 3 & 12
 Category 7 - Results on One Design & PHS for Adams 10 & Farr 40

SCHEDULE OF RACES

SPRINT	RACE*	DATE	START	RACE FORMAT	INFORMATION
1 2	3 4	Saturday, 24 September 2022	1300	Inshore Sprint Series	Inshore Sprint SIs
3 4	7 8	Saturday, 29 October 2022	1300	Inshore Sprint Series	Inshore Sprint SIs
5 6	11 12	Saturday, 19 November 2022	1300	Inshore Sprint Series	Inshore Sprint SIs
7 8	15 16	Saturday, 21 January 2023	1300	Inshore Sprint Series	Inshore Sprint SIs
9 10	23 24	Saturday, 1 April 2023	1300	Inshore Sprint Series	Inshore Sprint SIs

* Race Numbers for Inshore Annual Series

MHYC INSHORE SPRINT SAILING INSTRUCTIONS**1 RULES**

- 1.1 Refer to NOR 1 and 2.

2 SCHEDULE OF RACES

- 2.1 Racing is scheduled as detailed in the Schedule of Races for each Pointscore Series.

3 CLASS FLAGS & DIVISIONS

- 3.1 Class flags will be:

CLASS / DIVISION	CLASS FLAG
Division 1	Code Flag 'D'
Division 2	Code Flag 'E'
Division 3	Code Flag 'F'
Division 12 (Combined Div 1 & 2)	Code Flag 'K'
Adams 10	Adams 10 Insignia on White Background
Farr 40	Farr 40 Insignia on White Background

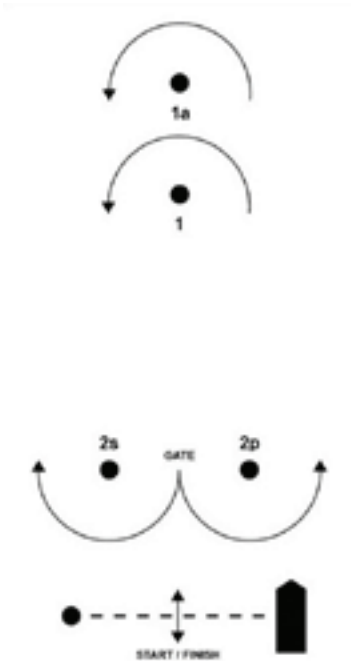
4 THE COURSES

- 4.1 The course to be sailed will be displayed as a number on a Course Board on the CV, preceded by the letter 'W', to indicate the number of roundings of the Windward Mark.

COURSE SIGNAL	DIVISION	COURSE
W1	Divisions 1, 2, 12, Adams 10, Farr 40	Start – 1a – Finish
	Division 3	Start – 1 – Finish
W2	Divisions 1, 2, 12, Adams 10, Farr 40	Start – 1a – Gate – 1a – Finish
	Division 3	Start – 1 – Gate – 1 – Finish
W3	Divisions 1, 2, 12, Adams 10, Farr 40	Start – 1a – Gate – 1a – Gate – 1a – Finish
	Division 3	Start – 1 – Gate – 1 – Gate – 1 – Finish

Sailing Handbook 2022-2023

- 4.2 All Marks are rounded to PORT except the Gate. If only one Gate Mark is laid, all boats shall round that Mark to Port.
- 4.3 A course change will be signaled as per RRS 33. Code flag C will be displayed along with a new bearing to the next mark of the course. The new mark will be the same colour with the addition of a black band. Subsequent legs may be changed without further signaling to maintain the course shape.
- 4.4 The course is described as follows:



5 MARKS

- 5.1 Marks are described as follows:

COURSE MARKS	MARK DESCRIPTIONS
Start /Finish Mark	Yellow Inflatable Mark
Mark 1a (Windward Mark for Division 1, Division 2, Adams 10 & Farr 40)	Orange Inflatable Mark
Mark 1 (Windward Mark for Div. 3)	Yellow Inflatable Mark
Gate Marks 2s & 2p	Orange Inflatable Mark/s
Change Of Course Mark 1a	Orange Inflatable Mark with Black Band
Change Of Course Mark 1	Yellow Inflatable Mark with Black Band

- 5.2 The bearing to the first Mark from the Start Line may be displayed prior to or with the Warning Signal.
- 5.3 The Gate will be laid approx. 50m to windward of the Start Line and may be laid after the starting signal.

6 THE START

- 6.1 The start will be an On Water Start in accordance with NOR 18.
- 6.2 Boats intending to race shall report to the committee vessel prior to their Warning signal on starboard tack with mainsail hoisted to confirm their intention to race. Boats that cannot be identified may be scored 'DNS'.
- 6.2 The starting line will be between a staff or halyard displaying an orange flag on the committee vessel and the course side of the start mark.
- 6.3 The first Warning Signal shall not be made before 1255hrs.
- 6.4 The RC may combine a divisional start with another where appropriate.
- 6.5 Up to two (2) races may be conducted for any class or division. The start of each subsequent race may be made as soon as practicable after all boats from a division have finished their previous race.
- 6.6 The RC may make a Divisional Warning Signal while boats of other divisions are still racing.

7 THE FINISH

- 7.1 The finishing line will be between a staff or halyard displaying a blue flag on the committee vessel and the course side of the finish mark.

8 TIME LIMIT

- 8.1 The Time Limit for all boats will be 30 minutes after the first boat in the Division has finished.
- 8.2 Boats retiring from racing comply with NOR 20.

9 PRIZES

- 9.1 Weekly divisional prizes may be awarded at a post-race presentation. Prizes not collected will be forfeited.

10 SCORING

- 10.1 The Low Point System, Appendix A of the RRS including A5.3 shall apply.
- 10.2 For all divisions, ten (10) races are scheduled. Four (4) races are required to constitute a series.
- 10.3 One (1) score will be excluded after four (4) races up to a maximum of two (2) excluded scores.

11 DISCLAIMER OF LIABILITY

- 11.1 Refer to NOR 29.
- 11.2 Attention is drawn to Fundamental Rule 3 which states: *“The responsibility for a boat’s decision to participate in a race or to continue racing is hers alone”*



PACIFIC

RIGGING

Standing and Running Rigging

Splicing Services

Insurance Rig Checks

Mast Commissioning

Mooring Lines

Deck Hardware Service

Winch Servicing

✉ **Riggers@PacificRH.com.au**

☎ **0411 153 261**

PACIFIC RIGGING WEDNESDAY NON-SPINNAKER SERIES
Category 7 / Pursuit Results / Divisions as Required
SCHEDULE OF RACES

SERIES 1			
RACE	DATE	RACE FORMAT	'COUNT UP' START TIME
1	Wednesday, 7 September 2022	Inshore Pursuit Race	1300
2	Wednesday, 14 September 2022	Inshore Pursuit Race	1300
3	Wednesday, 21 September 2022	Inshore Pursuit Race	1300
4	Wednesday, 28 September 2022	Inshore Pursuit Race	1300
5	Wednesday, 5 October 2022	Inshore Pursuit Race	1330
6	Wednesday, 12 October 2022	Inshore Pursuit Race	1330
7	Wednesday, 19 October 2022	Inshore Pursuit Race	1330
8	Wednesday, 26 October 2022	Inshore Pursuit Race	1330
9	Wednesday, 2 November 2022	Inshore Pursuit Race	1330
10	Wednesday, 9 November 2022	Inshore Pursuit Race	1330
11	Wednesday, 16 November 2022	Inshore Pursuit Race	1330
12	Wednesday, 23 November 2022	Inshore Pursuit Race	1330
13	Wednesday, 30 November 2022	Inshore Pursuit Race	1330
SERIES 2			
RACE	DATE	RACE FORMAT	'COUNT UP' START TIME
1	Wednesday, 7 December 2022	Inshore Pursuit Race	1330
2	Wednesday, 14 December 2022	Inshore Pursuit Race	1330
3	Wednesday, 4 January 2023	Inshore Pursuit Race	1330
4	Wednesday, 11 January 2023	Inshore Pursuit Race	1330
5	Wednesday, 18 January 2023	Inshore Pursuit Race	1330
6	Wednesday, 25 January 2023	Inshore Pursuit Race	1330
7	Wednesday, 1 February 2023	Inshore Pursuit Race	1330
8	Wednesday, 8 February 2023	Inshore Pursuit Race	1330
9	Wednesday, 15 February 2023	Inshore Pursuit Race	1330
10	Wednesday, 22 February 2023	Inshore Pursuit Race	1330
11	Wednesday, 1 March 2023	Inshore Pursuit Race	1330
12	Wednesday, 8 March 2023	Inshore Pursuit Race	1330

PACIFIC RIGGING WEDNESDAY NON-SPINNAKER SERIES
Category 7 / Pursuit Results / Divisions as Required
SCHEDULE OF RACES

SERIES 3			
RACE	DATE	RACE FORMAT	'COUNT UP' START TIME
1	Wednesday, 15 March 2023	Inshore Pursuit Race	1330
2	Wednesday, 22 March 2023	Inshore Pursuit Race	1330
3	Wednesday, 29 March 2023	Inshore Pursuit Race	1330
4	Wednesday, 5 April 2023	Inshore Pursuit Race	1300
5	Wednesday, 12 April 2023	Inshore Pursuit Race	1300
6	Wednesday, 19 April 2023	Inshore Pursuit Race	1300
7	Wednesday, 26 April 2023	Inshore Pursuit Race	1300
8	Wednesday, 3 May 2023	Inshore Pursuit Race	1300
9	Wednesday, 10 May 2023	Inshore Pursuit Race	1300
10	Wednesday, 17 May 2023	Inshore Pursuit Race	1300
11	Wednesday, 24 May 2023	Inshore Pursuit Race	1300
12	Wednesday, 31 May 2023	Inshore Pursuit Race	1300
SERIES 4			
RACE	DATE	RACE FORMAT	'COUNT UP' START TIME
1	Wednesday, 7 June 2023	Inshore Pursuit Race	1300
2	Wednesday, 14 June 2023	Inshore Pursuit Race	1300
3	Wednesday, 21 June 2023	Inshore Pursuit Race	1300
4	Wednesday, 28 June 2023	Inshore Pursuit Race	1300
5	Wednesday, 5 July 2023	Inshore Pursuit Race	1300
6	Wednesday, 12 July 2023	Inshore Pursuit Race	1300
7	Wednesday, 19 July 2023	Inshore Pursuit Race	1300
8	Wednesday, 26 July 2023	Inshore Pursuit Race	1300
9	Wednesday, 2 August 2023	Inshore Pursuit Race	1300
10	Wednesday, 9 August 2023	Inshore Pursuit Race	1300
11	Wednesday, 16 August 2023	Inshore Pursuit Race	1300
12	Wednesday, 23 August 2023	Inshore Pursuit Race	1300
13	Wednesday, 30 August 2023	Inshore Pursuit Race	1300

PACIFIC RIGGING WEDNESDAY NON-SPINNAKER SERIES

SAILING INSTRUCTIONS

1 RULES

- 1.1 Refer to NOR 1 and 2.
- 1.2 Any boat under sail that breaches imaginary lines which define the swing mooring boundaries to the North and South of the Spit Channel, such channel being the area of clear water bounded by the Pumphouses, Clontarf Point and the Spit Bridge, may be disqualified from competition. This rule shall apply from 1230 to 1730 hours on each race day.
- 1.3 For the purpose of RRS 19 & 20, the imaginary lines which define the swing mooring boundaries to the North and South of the Spit Channel shall be deemed obstructions.
- 1.4 No boat shall not enter the area bound by imaginary lines which define the swing mooring boundaries to the North and South of the Spit Channel after her Preparatory Signal. Boats leaving their moorings, or the Club's Marina under motor, are exempted from this regulation, however skippers are requested to move clear of the moorings at the first reasonable opportunity.
- 1.5 Boats shall use only a mainsail and one headsail at any time. The headsail may be poled out but shall be fully hanked or attached by means of a luff groove device to the permanent forestay. Headsails shall not be set flying. No sail shall be attached forward of the point of attachment of the permanent forestay.

2 SCHEDULE OF RACES

- 2.1 Racing is scheduled as per the schedule of races for each Wednesday Series (1, 2, 3 & 4).

3 CLASS FLAGS & DIVISIONS

- 3.1 Entrants may be allocated to the following racing divisions appropriate to their performance and series entry numbers:

DIVISION	CODE FLAG
Division 1	Code Flag 'D'
Division 2	Code Flag 'E'

- 3.2 Divisional parameters may be varied at the discretion of the race committee.
- 3.3 Divisions may be formed or abandoned at the discretion of the race committee for each scheduled series.

4 THE COURSES

- 4.1 As per the Wednesday Non-Spinnaker Course List.
- 4.2 Courses will automatically be shortened at the mark indicated by (*) in the event that the leading boat in its division has not reached that mark by 1430 hours or 1500 in daylight savings. All subsequent marks will be omitted and that division fleet will proceed directly to the finish after having rounded. The boat responsible for shortening shall fly a **yellow ribbon or flag** prominently from her backstay and make an announcement on VHF Ch72 to advise the remainder of the division of the shorten course. The boat responsible for shortening shall immediately thereafter inform the race committee of her action by mobile phone on 9969 1244 or VHF Ch72.
- 4.3 Courses may be shortened by the race committee prior to the start by displaying Code Flag 'S' prior to or with the warning signal. The display of Code Flag 'S' prior to the start shall mean the course is shortened and after rounding the mark indicated by (*) all boats should proceed directly to the finish.

5 THE START

- 5.1 The attention signal shall not be made before:

OUTSIDE OF DAYLIGHT SAVING		DURING DAYLIGHT SAVING	
1250	Attention signal and course number displayed	1320	Attention signal and course number displayed
1300	Start signal and start handicap count-up clock	1330	Start signal and start handicap count-up clock -up

- 5.2 The start line will be the Clubhouse Start in accordance to MHYC NOR 16.
- 5.3 The start shall be a count-up start in accordance to NOR 22.
- 5.4 A boat identified by the RC as having entered the prohibited area described in SI 1.4 shall have a penalty of 5 minutes added to her finishing time. This amends RRS 63.1.
- 5.5 There will be no individual recall signals. A boat on the course side of the starting line for her designated start time will be penalised 5 minutes plus the difference between her nominated start time and actual start time unless she returns and restarts. This amends RRS 29 and 63.1.

6 THE FINISH

- 6.1 The finish line will be the Clubhouse finish line in accordance to MHYC NOR 17.

7 HANDICAPS

- 7.1 Starting handicap numbers will be allocated at the discretion of the Sailing Manager or their nominee and adjusted for subsequent races based on PHS calculation.
- 7.2 The Sailing Manager or their nominee may at their absolute discretion review any boat's handicap where they are of the opinion that due to anomaly, error or change of racing trim or equipment, the handicap is considered unfair or unreasonable.
- 7.3 Allocated handicaps shall not be the subject of protest or dispute. This amends RRS 60.1 & 62.
- 7.4 Handicaps are published on the day of racing on the MHYC website and noticeboard.

8 TIME LIMIT

- 8.1 The time limit will be 1630 hours, or 1700 hours during daylight saving. Only those boats that have crossed the finishing line within the time limit shall rank as finishers. This amends RRS 35.
- 8.2 Boats not finishing within the time limited will be scored DNF. This amends RRS 35.
- 8.3 Competitors who retire from the race, or who will not finish within the time limit are required to advise the RC on VHF Ch72 or the MHYC Sailing Office either in person or by telephone on 02 9969 1244.
- 8.4 Competitors who fail to notify the RC of their retirement will receive a penalty of 5 minutes added to their starting number handicap in the following race. This amends RRS 63.1.
- 8.5 The time limit for notifying the RC shall be no later than 30 minutes after the time limit of the race.

9 PROTESTS

- 9.1 Protests shall be in accordance with MHYC NOR 24.
- 9.2 The Protest Limit Time Limit will be 30 minutes after the finishing time for the last boat. This amends NOR 24.2.

10 SCORING

- 10.1 The Low Point System, Appendix A of the RRS shall apply.
- 10.2 RRS A5.3 applies except that the score of DNC for boats which did not come to the starting area is scored the number of starters plus 2.
- 10.3 Seven (7) races are required to be completed to constitute a series. One (1) excluded score will apply after every five (5) completed races, up to a maximum of two (2) excluded scores. The number of scheduled races for each series is as follows:
- | | |
|----------|----------|
| Series 1 | 13 Races |
| Series 2 | 12 Races |
| Series 3 | 12 Races |
| Series 4 | 13 Races |
- 10.4 Abandoned races will not be re-sailed.
- 10.5 Pointscores will be open to series and casual entrants.
- 10.6 A boat's points shall not be transferred with a change of ownership or division.

11 PRIZES

- 11.1 Prizes may be awarded at a post-race presentation. Prizes not collected at that time shall be forfeited.
- 11.2 Additional prizes may be awarded.

NOTICE TO COMPETITORS – BBQ & RAFFLE

Each week, the first boat across the line from either division shall be responsible for the post-race barbecue. The first boat across the line in the other division shall be responsible for selling the post-race raffle tickets. Where a boat cannot be present for their duty, responsibility will fall to the next placed boat.



PACIFIC RIGGING WEDNESDAY NON-SPINNAKER SERIES
DIVISION 1 COURSE DESCRIPTIONS**COURSE NOTES:**

- 1) All marks are to be rounded or passed to STARBOARD except those suffixed with the letter (P) which shall be rounded or passed to PORT.
- 2) For shortened course mark (*) refer to SI 4.2 & 4.3.

Course 1 (9.3 nm)

- | | |
|-------------------------|------------------------------|
| 1. Start MHYC | 5. AS Mark Nielsen Park |
| 2. AS Manly Mark West | 6. AS Mark Chowder Bay South |
| 3. AS Manly Mark East | 7. Sow and Pigs Reef (P) |
| 4. AS Mark Lady Bay (*) | 8. Finish MHYC |

Course 2 (10.1 nm)

- | | |
|--------------------------------|--------------------------|
| 1. Start MHYC | 6. AS Mark Manly West |
| 2. AS Mark Manly West | 7. AS Mark Manly East |
| 3. AS Mark Manly East | 8. AS Mark Edwards Beach |
| 4. AS Cannae Point | 9. Finish MHYC |
| 5. AS Mark Eastern Channel (*) | |

Course 3 (10.1 nm)

- | | |
|-----------------------|------------------|
| 1. Start MHYC | 4. Clarke Island |
| 2. AS Cannae Point | 5. Finish MHYC |
| 3. AS Point Piper (*) | |

Course 4 (10.6 nm)

- | | |
|---------------------------|-------------------------|
| 1. Start MHYC | 6. AS Grotto Point |
| 2. AS Eastern Channel (*) | 7. AS Lady Bay |
| 3. AS Obelisk Bay | 8. AS Eastern Channel |
| 4. AS Rocky Point | 9. AS Chowder Bay South |
| 5. AS Edwards Beach | 10. Finish MHYC |

Course 5 (11.1 nm)

- | | |
|-------------------------|--------------------------|
| 1. Start MHYC | 6. Sow and Pigs Reef (P) |
| 2. AS Mark Rose Bay (*) | 7. AS Mark Grotto Point |
| 3. AS Shark Island | 8. AS Mark Lady Bay |
| 4. Shark Island | 9. Finish MHYC |
| 5. AS Mark Point Piper | |

Course 6 (11.3 nm)

- | | |
|--------------------------------|-----------------------|
| 1. Start MHYC | 6. Sow and Pigs (P) |
| 2. AS Mark Lady Bay | 7. AS Mark Manly West |
| 3. AS Mark Eastern Channel (*) | 8. AS Mark Manly East |
| 4. AS Mark Nielson Park | 9. AS Mark Lady Bay |
| 5. AS Mark Chowder Bay South | 10. Finish MHYC |

PACIFIC RIGGING WEDNESDAY NON-SPINNAKER SERIES
DIVISION 1 COURSE DESCRIPTIONS**Course 7 (11.6 nm)**

- | | |
|-------------------------|--------------------------|
| 1. Start MHYC | 5. AS Mark Manly West |
| 2. AS Mark Shark Island | 6. AS Mark Manly East |
| 3. Shark Island (*) | 7. AS Mark Edwards Beach |
| 4. Clarke Island | 8. Finish MHYC |

Course 8 (12.6 nm)

- | | |
|-------------------------|-------------------------|
| 1. Start MHYC | 6. AS Rose Bay |
| 2. AS Mark Rose Bay (*) | 7. AS Mark Shark Island |
| 3. Clarke Island | 8. Shark Island |
| 4. Fort Denison | 9. Finish MHYC |
| 5. Shark Island | |

Course 9 (13.7 nm)

- | | |
|---------------------------|---------------------------|
| 1. Start MHYC | 8. AS Mark Lady Bay |
| 2. AS Mark Lady Bay | 9. AS Mark Rocky Point |
| 3. AS Mark Rocky Point | 10. AS Mark Edwards Beach |
| 4. AS Mark Edwards Beach | 11. AS Mark Manly West |
| 5. AS Mark Manly West | 12. AS Mark Manly East |
| 6. AS Mark Manly East (*) | 13. AS Mark Cannae Point |
| 7. AS Mark Cannae Point | 14. Finish MHYC |

Course 10 (14.4 nm)

- | | |
|-----------------------------|---------------------|
| 1. Start MHYC | 6. AS Taylor Bay |
| 2. AS Mark Rose Bay | 7. AS Mark Rose Bay |
| 3. AS Mark Obelisk Bay | 8. AS Shark Island |
| 4. AS Mark Shark Island (*) | 9. Shark Island |
| 5. AS Mark Point Piper | 10. Finish MHYC |

Course 11 (15.0 nm)

- | | |
|-----------------------|-------------------------|
| 1. Start MHYC | 6. AS Mark Manly East |
| 2. AS Mark Manly West | 7. AS Mark Cannae Point |
| 3. AS Mark Manly East | 8. AS Mark Lady Bay |
| 4. Clarke Island (*) | 9. Finish MHYC |
| 5. AS Mark Manly West | |

Course 12 (16.1 nm)

- | | |
|-------------------------|---------------------------|
| 1. Start MHYC | 7. AS Mark Manly West |
| 2. AS Mark Manly West | 8. AS Mark Manly East |
| 3. AS Mark Manly East | 9. AS Mark Cannae Point |
| 4. AS Mark Rose Bay (*) | 10. AS Mark Edwards Beach |
| 5. Clark Island | 11. Finish MHYC |
| 6. Fort Denison | |

PACIFIC RIGGING WEDNESDAY NON-SPINNAKER SERIES
DIVISION 2 COURSE DESCRIPTIONS**COURSE NOTES:**

- 1) All marks are to be rounded or passed to STARBOARD except those suffixed with the letter (P) which shall be rounded or passed to PORT.
- 2) For shortened course mark (*) refer to SI 4.2 & 4.3.

Course 1 (8.6 nm)

- | | |
|-----------------------|-------------------------|
| 1. Start MHYC | 4. AS Mark Lady Bay (*) |
| 2. AS Manly Mark West | 5. AS Mark Nielsen Park |
| 3. AS Manly Mark East | 6. Finish MHYC |

Course 2 (8.9 nm)

- | | |
|--------------------------------|--------------------------|
| 1. Start MHYC | 5. AS Mark Manly East |
| 2. AS Cannae Point | 6. AS Mark Edwards Beach |
| 3. AS Mark Eastern Channel (*) | 7. Finish MHYC |
| 4. AS Mark Manly West | |

Course 3 (8.8 nm)

- | | |
|-----------------------|------------------|
| 1. Start MHYC | 3. Clarke Island |
| 2. AS Point Piper (*) | 4. Finish MHYC |

Course 4 (8.7 nm)

- | | |
|---------------------------|---------------------|
| 1. Start MHYC | 5. AS Edwards Beach |
| 2. AS Eastern Channel (*) | 6. AS Grotto Point |
| 3. AS Obelisk Bay | 7. AS Lady Bay |
| 4. AS Rocky Point | 8. Finish MHYC |

Course 5 (10.6 nm)

- | | |
|-------------------------|--------------------------|
| 1. Start MHYC | 6. Sow and Pigs Reef (P) |
| 2. AS Mark Rose Bay (*) | 7. AS Mark Grotto Point |
| 3. AS Shark Island | 8. AS Mark Lady Bay |
| 4. Shark Island | 9. Finish MHYC |

Course 6 (10.8 nm)

- | | |
|--------------------------------|-----------------------|
| 1. Start MHYC | 6. AS Mark Manly West |
| 2. AS Mark Lady Bay | 7. AS Mark Manly East |
| 3. AS Mark Eastern Channel (*) | 8. AS Mark Lady Bay |
| 4. AS Mark Chowder Bay South | 9. Finish MHYC |
| 5. Sow and Pigs Reef (P) | |

PACIFIC RIGGING WEDNESDAY NON-SPINNAKER SERIES
DIVISION 2 COURSE DESCRIPTIONS**Course 7 (10.2 nm)**

- | | | | |
|----|----------------------|----|-----------------------|
| 1. | Start MHYC | 5. | AS Mark Manly East |
| 2. | AS Mark Shark Island | 6. | AS Mark Edwards Beach |
| 3. | Shark Island (*) | 7. | Finish MHYC |
| 4. | AS Mark Manly West | | |

Course 8 (11.1 nm)

- | | | | |
|----|----------------------|----|----------------------|
| 1. | Start MHYC | 6. | AS Rose Bay |
| 2. | AS Mark Rose Bay (*) | 7. | AS Mark Shark Island |
| 3. | Clarke Island | 8. | Shark Island |
| 5. | Shark Island | 9. | Finish MHYC |

Course 9 (13.7 / 12.6 / 10.1 nm)

- | | | | |
|----|------------------------|-----|-----------------------|
| 1. | Start MHYC | 7. | AS Mark Cannae Point |
| 2. | AS Mark Lady Bay | 8. | AS Mark Lady Bay |
| 3. | AS Mark Rocky Point | 9. | AS Mark Rocky Point |
| 4. | AS Mark Edwards Beach | 10. | AS Mark Edwards Beach |
| 5. | AS Mark Manly West | 11. | AS Mark Cannae Point |
| 6. | AS Mark Manly East (*) | 12. | Finish MHYC |

Course 10 (13.4 nm)

- | | | | |
|----|--------------------------|-----|------------------|
| 1. | Start MHYC | 6. | Shark Island |
| 2. | AS Mark Rose Bay | 7. | AS Mark Rose Bay |
| 3. | AS Mark Obelisk Bay | 8. | AS Shark Island |
| 4. | AS Mark Shark Island (*) | 9. | Shark Island |
| 5. | AS Mark Point Piper | 10. | Finish MHYC |

Course 11 (13.7)

- | | | | |
|----|--------------------|----|----------------------|
| 1. | Start MHYC | 5. | AS Mark Cannae Point |
| 2. | AS Mark Manly West | 6. | AS Mark Lady Bay |
| 3. | AS Mark Manly East | 7. | Finish MHYC |
| 4. | Clarke Island (*) | | |

Course 12 (13.4 nm)

- | | | | |
|----|----------------------|----|-----------------------|
| 1. | Start MHYC | 5. | Clark Island |
| 2. | AS Mark Manly West | 6. | Fort Denison |
| 3. | AS Mark Manly East | 7. | AS Mark Edwards Beach |
| 4. | AS Mark Rose Bay (*) | 8. | Finish MHYC |



Flagstaff Marine Thursday Twilight Series

Starts October 7



BENETEAU



ROBERT OATLEY

FLAGSTAFF MARINE THURSDAY TWILIGHT NON-SPINNAKER SERIES

Category 7 / Pursuit Results / Divisions as Required

SCHEDULE OF RACES

RACE	DATE	RACE FORMAT	'COUNT UP' SCHEDULED START TIME
TWILIGHT WARM-UP NON-POINTSCORE			
1	Thursday, 29 September 2022	Non-Pointscore Pursuit	1700
PRE-CHRISTMAS TWILIGHT POINTSCORE			
2	Thursday, 6 October 2022	Inshore Pursuit Race	1800
3	Thursday, 13 October 2022 *	Inshore Pursuit Race	1800
4	Thursday, 20 October 2022	Inshore Pursuit Race	1800
5	Thursday, 27 October 2022	Inshore Pursuit Race	1800
6	Thursday, 3 November 2022	Inshore Pursuit Race	1800
7	Thursday, 10 November 2022	Inshore Pursuit Race	1800
8	Thursday, 17 November 2022 *	Inshore Pursuit Race	1800
9	Thursday, 24 November 2022	Inshore Pursuit Race	1800
10	Thursday, 1 December 2022	Inshore Pursuit Race	1800
11	Thursday, 8 December 2022	Inshore Pursuit Race	1800
12	Thursday, 15 December 2022 *	Inshore Pursuit Race	1800
POST-CHRISTMAS TWILIGHT POINTSCORE			
13	Thursday, 5 January 2023	Inshore Pursuit Race	1800
14	Thursday, 12 January 2023 *	Inshore Pursuit Race	1800
15	Thursday, 19 January 2023	Inshore Pursuit Race	1800
16	Thursday, 2 February 2023	Inshore Pursuit Race	1800
17	Thursday, 9 February 2023	Inshore Pursuit Race	1800
18	Thursday, 16 February 2023 *	Inshore Pursuit Race	1800
19	Thursday, 23 February 2023	Inshore Pursuit Race	1800
20	Thursday, 2 March 2023	Inshore Pursuit Race	1800
21	Thursday, 9 March 2023	Inshore Pursuit Race	1800
22	Thursday, 16 March 2023 *	Inshore Pursuit Race	1800
23	Thursday, 23 March 2023	Inshore Pursuit Race	1800
24	Thursday, 30 March 2023	Inshore Pursuit Race	1800

FLAGSTAFF MARINE THURSDAY WOMEN'S TWILIGHT NON-SPINNAKER SERIES

Category 7 / Pursuit Start / Pursuit Results / Divisions as Required

SCHEDULE OF RACES

* WOMEN'S TWILIGHT POINTSCORE			
3	Thursday, 13 October 2022	Inshore Pursuit Race	1800
8	Thursday, 17 November 2022	Inshore Pursuit Race	1800
12	Thursday, 15 December 2022	Inshore Pursuit Race	1800
14	Thursday, 12 January 2023	Inshore Pursuit Race	1800
18	Thursday, 16 February 2023	Inshore Pursuit Race	1800
22	Thursday, 16 March 2023	Inshore Pursuit Race	1800

FLAGSTAFF MARINE THURSDAY TWILIGHT NON-SPINNAKER SERIES**SAILING INSTRUCTIONS****SPECIAL NOTICE TO COMPETITORS**

The MHYC Sailing Committee requests Members' co-operation in ensuring that MHYC boats diligently observe the applicable Navigation Legislation, the Club's Notice of Race and these Sailing Instructions during Twilight racing. In particular, the Person in Charge must ensure that a proper lookout is maintained throughout the event and that the conduct of their boat in relation to ferries and commercial shipping and particularly in the enclosed water of Lower Middle Harbour is consistent with the exemplary standards expected by the Club.

The Notice of Race and Sailing Instructions will be applied diligently during the Twilight Series and the Sailing Committee may deploy an on-water observer to monitor the behaviour of boats. Boats breaching these will be penalised as appropriate and repeat offenders may have action taken against them by the Sailing Committee. Members are reminded of the Club's right to reject an entry or take action under the Racing Rules of Sailing in the event of gross misconduct or poor sportsmanship.

Competitors are reminded that the waters between the southern end of Clontarf Beach and Spit Bridge are designated as a navigation channel and that boats (racing and packing up) are to comply with their obligations under Collision Regulations towards non-racing vessels using the channel. It is recommended that as a boat approaches the finish line, a crew member be sent to the bow as lookout.

1 RULES

- 1.1 Refer to NOR 1 and 2.
- 1.2 The nominated helmsperson of each boat shall be at the helm during the period prior to starting and until the boat is abeam of Grotto Point and when finishing from the time the boat is abeam Grotto Point and until it finishes and clears the finish line.
- 1.3 Boats shall carry navigation lights and shall illuminate them after official sunset. Boats not illuminating navigation lights after official sunset will be scored 'DNF'. This amends RRS 63.1.
- 1.4 Only a mainsail and one headsail may be used at any time. The headsail may be poled out but shall be fully hanked or attached by means of a luff groove device to the permanent forestay. Headsails shall not be set flying. No sail shall be attached forward of the point of attachment of the permanent forestay.

2 SCHEDULE OF RACES

- 2.1 Racing is scheduled as per the Schedule of Races for the Twilight Series.

3 CLASS FLAGS & DIVISIONS

- 3.1 Entrants may be allocated to racing divisions appropriate to their performance and entry numbers.
- 3.2 Class flags will be as follows:

CLASS / DIVISION	CODE FLAG
Division 1	Code Flag 'D'
Division 2	Code Flag 'E'
Division 3	Code Flag 'F'
Division 4	Code Flag 'G'

4 THE COURSES

- 4.1 As per the Thursday Twilight Non-Spinnaker Course List.
- 4.2 Courses may be shortened by the Race Committee prior to the start by displaying Code Flag "S" prior to or with the warning signal. The display of Code Flag "S" shall mean the Course is shortened and upon rounding the mark prefixed (*) all boats should proceed directly to the finish.
- 4.3 Courses may be shortened on the water for one or more divisions by the Race Committee displaying Code Flag "S" and the class flag/s for the divisions to be shortened. Boats shall finish between the Committee Vessel and the nearby rounding mark.
- 4.4 If a Committee Vessel displaying Code Flag "S" is stationed to the West or South of Grotto Point Lighthouse, boats shall finish between the Committee Vessel and Grotto Point Lighthouse.

5 HANDICAPS

- 5.1 Starting handicap numbers will be allocated at the discretion of the Sailing Manager or their nominee and adjusted for subsequent races based on PHS calculation.
- 5.2 The Sailing Manager or his nominee may at their absolute discretion review any boat's time handicap where they are of the opinion that due to anomaly, error or change of racing trim or equipment, the handicap is considered unfair or unreasonable.
- 5.3 Allocated handicaps shall not be the subject of protest or dispute. This amends RRS 60.1 & 62.
- 5.4 Handicaps are published on the day of racing on the MHYC website and noticeboard.
- 5.5 Entrants will be allocated to racing divisions appropriate to the number of entries and the relative speed of entries. Division allocation is subject to the receipt of entries and shall be structured by the Sailing Manager at their absolute discretion.
- 5.6 Allocation to Divisions shall not be the subject to protest or constitute grounds for redress. This amends RRS 60.1 and 62.

6 THE START

- 6.1 With the exception of Course 9, the Start will be the Pumphouse Start Line in accordance with NOR 16.2.
- 6.2 The start sequence will be a Count Up sequence start per MHYC NOR 22.

START TIME	
1750	Attention signal and course number displayed
1800	Start handicap count-up clock

- 6.3 There will be no individual recall signals. A boat on the course side of the starting line for her designated start time will be penalised 5 minutes plus the difference between her nominated start time and actual start time unless she returns and restarts. This amends RRS 29 and 63.1.
- 6.4 For Course 9, the Start will be an On Water Start. NOR 18 is amended as follows:
- NOR 18.1 Boats intending to race shall report to the Committee Vessel (CV) prior to their Preparatory Signal (4 minutes prior to their allocated start time) on VHF Channel 72. Boats that do not report to the CV may be scored Did Not Start (DNS).
 - NOR 18.2, 18.3 & 18.4 shall not apply.
 - NOR 18.5 applies. Prior to her Preparatory Signal, a boat shall keep clear of the starting line and all boats about to start or which have started. Attention is drawn to RRS 23.
 - NOR 18.6 shall not apply.
- 6.5 For Course 9, the Start handicap count-up clock may be replaced by the manual display of Starting Handicap Numbers or a broadcast of Starting Handicap Numbers on VHF Channel 72.

7 THE FINISH

- 7.1 The Finish will be the Clubhouse Finish Line in accordance with NOR 17 with the exception of Course 9.
- 7.2 All spinnaker poles shall be dropped and stowed before crossing the transit formed by the two pumphouses.
- 7.3 Boats shall continue without changing course until they have crossed the D-Arm transit. Boats are encouraged to use their motor and to drop their headsail at the first opportunity and it is not necessary to wait until the D-Arm transit has been crossed for either.
- 7.4 Boats shall keep to the starboard (Clontarf) side of the channel and proceed towards Fisher Bay to pack up.
- 7.5 After packing up and when returning to the Club, boats shall keep to the starboard (Spit Road) side of the channel taking care to avoid any boat still under sail or non-racing vessels using the channel.
- 7.7 For Course 9, the finish will be an on water finishing line between a staff or halyard displaying a blue flag on the committee vessel and the course side of the finish mark. Boats shall not pass through the finish line when the CV is on station, except when finishing.
- 7.8 The RC may award a 45% scoring penalty to boats observed by the RC to have breached a rule of SI 7.

8 TIME LIMITS

- 8.1 The time limit will be 2000 hours, except that:
 - During the months of November and February, the time limit will be 2015 hours
 - During the months of December and January, the time limit will be 2030 hoursOnly boats that have finished within the time limit shall rank as finishers. Boats not finishing within the time limit shall be scored DNF.
- 8.2 Competitors who fail to notify the RC of their retirement will receive a penalty of 5 minutes added to their starting number handicap in the following race.
- 8.3 The time limit for notifying the RC shall be no later than 30 minutes after the time limit of the race concerned. This amends NOR 20.

9 ALTERNATIVE PENALTIES

- 9.1 For an infringement of RRS Part 2, the Two-Turns Penalty RRS 44.2 shall apply.
- 9.2 For an infringement of any other rule or requirement, the Scoring Penalties of RRS 44.3 shall apply. The penalty shall be computed as a percentage of the number of entries in the relevant division.

10 PROTESTS

- 10.1 Protests shall be in accordance with NOR 24, except that the Protest Limit Time will be 2130hrs on the day of the race. This amends NOR 24.2.

11. PRIZES

- 11.1 Prizes may be awarded at a post-race presentation appropriate to entries received in each division. Prizes not collected at the presentation will be forfeited.
- 11.2 Series winners may be awarded at a presentation on the final night of racing.

12 SCORING

- 12.1 A boat's finish time shall be used for the calculation of its racing division results. The boat with the earliest finish time (after application of scoring penalties, if any) will be scored first.
- 12.2 The Low Point System, Appendix A of the RRS shall apply.
- 12.3 RRS A5.3 applies except that DNC is scored the number of starters plus 2.
- 12.4 A casual race entrant will not receive a series score. This amends RRS A2.2.
- 12.5 Thursday Twilight Annual Series
 - a) Twenty-three (23) pointscore races are scheduled and ten (10) races are required to be completed to constitute a series.
 - b) One (1) excluded score will apply after every four (4) completed races, up to a maximum of four (4) exclude scores.
- 12.6 Thursday Twilight Pre-Christmas Pointscore
 - a) Eleven (11) pointscore races are scheduled and five (5) races are required to be completed to constitute a series.
 - b) One (1) excluded score will apply after every four (4) completed races, up to a maximum of two (2) excluded scores.
- 12.7 Thursday Twilight Post-Christmas Pointscore
 - a) Twelve (12) pointscore races are scheduled and five (5) races are required to be completed to constitute a series.
 - b) One (1) excluded score will apply after every four (4) completed races, up to a maximum of two (2) excluded scores.
- 12.8 Thursday Twilight Women's Pointscore (Female Helms)
 - a) Six (6) pointscore races are scheduled and two (2) races are required to be completed to constitute a series.
 - b) One (1) excluded score will apply after every four (4) completed races, up to a maximum of one (1) excluded score.
- 12.9 A boat's points will not be transferred with a change of ownership or Division.

COURSE DESCRIPTIONS

FLAGSTAFF MARINE THURSDAY TWILIGHT NON-SPINNAKER SERIES

For shortened course mark () refer to SI 4.2.*

Division 1

COURSE 1 (approx. 4.9nm)

- | | |
|-----------------------|-----------------------|
| 1. Start MHYC | 3. AS Mark Manly East |
| 2. AS Mark Manly West | 4. Finish MHYC |

COURSE 2 (approx. 5.1nm)

- | | |
|-----------------------|-------------------------|
| 1. Start MHYC | 4. AS Mark Cannae Point |
| 2. AS Mark Manly West | 5. Finish MHYC |
| 3. AS Mark Manly East | |

COURSE 3 (approx. 6.4nm)

- | | |
|-------------------------|-------------------------|
| 1. Start MHYC | 4. AS Mark East Channel |
| 2. AS Mark Cannae Point | 5. Finish MHYC |
| 3. AS Mark Lady Bay (*) | |

COURSE 4 (approx. 6.9nm)

- | | |
|-----------------------------|------------------------------|
| 1. Start MHYC | 4. AS Mark Chowder Bay South |
| 2. AS Mark Lady Bay | 5. Finish MHYC |
| 3. AS Mark Nielsen Park (*) | |

COURSE 5 (approx. 7.5nm)

- | | |
|-------------------------|-------------------------|
| 1. Start MHYC | 5. AS Mark Lady Bay (*) |
| 2. AS Mark Manly West | 6. AS Mark East Channel |
| 3. AS Mark Manly East | 7. Finish MHYC |
| 4. AS Mark Cannae Point | |

COURSE 6 (approx. 8.2nm)

- | | |
|-------------------------|-----------------------------|
| 1. Start MHYC | 4. AS Mark East Channel (*) |
| 2. AS Mark Cannae Point | 5. AS Mark Taylors Bay |
| 3. AS Mark Lady Bay | 6. Finish MHYC |

COURSE 7 (approx. 8.5nm)

- | | |
|---------------------|------------------------|
| 1. Start MHYC | 4. Shark Island (*) |
| 2. AS Mark Rose Bay | 5. AS Mark Taylors Bay |
| 3. AS Shark Island | 6. Finish MHYC |

COURSE 8 (approx. 9.6nm)

- | | |
|-------------------------|-------------------------|
| 1. Start MHYC | 5. AS Mark Nielsen Park |
| 2. AS Mark Manly West | 6. AS Mark Taylors Bay |
| 3. AS Mark Manly East | 7. Finish MHYC |
| 4. AS Mark Lady Bay (*) | |

COURSE 9 (approx. 7.0nm)

- | | |
|--------------------------------------|--|
| 1. Start – Grotto Point (Boat Start) | 5. AS Mark East Channel (*) |
| 2. AS Mark Manly West | 6. AS Mark Grotto Point |
| 3. AS Mark Manly East | 7. AS Mark Cannae Point |
| 4. AS Mark Cannae Point | 8. Finish – Grotto Point (Boat Finish) |

COURSE DESCRIPTIONS

FLAGSTAFF MARINE THURSDAY TWILIGHT NON-SPINNAKER SERIES

For shortened course mark () refer to SI 4.2.*

Division 2

COURSE 1 (approx. 4.5nm)

- | | |
|-----------------------------|--------------------------|
| 1. Start MHYC | 4. AS Mark Edwards Beach |
| 2. AS Mark Cannae Point (*) | 5. Finish MHYC |
| 3. AS Mark Rocky Point | |

COURSE 2 (approx. 4.9nm)

- | | |
|-----------------------|-----------------------|
| 1. Start MHYC | 3. AS Mark Manly East |
| 2. AS Mark Manly West | 4. Finish MHYC |

COURSE 3 (approx. 5.5nm)

- | | |
|-----------------------------|---------------------|
| 1. Start MHYC | 3. AS Mark Lady Bay |
| 2. AS Mark Cannae Point (*) | 4. Finish MHYC |

COURSE 4 (approx. 6.5nm)

- | | |
|-------------------------|------------------------|
| 1. Start MHYC | 4. AS Mark Obelisk Bay |
| 2. AS Mark Lady Bay (*) | 5. Finish MHYC |
| 3. AS Mark Nielsen Park | |

COURSE 5 (approx. 6.6nm)

- | | |
|-----------------------|-----------------------------|
| 1. Start MHYC | 4. AS Mark Cannae Point (*) |
| 2. AS Mark Manly West | 5. AS Mark Lady Bay |
| 3. AS Mark Manly East | 6. Finish MHYC |

COURSE 6 (approx. 7.4nm)

- | | |
|-------------------------|------------------------------|
| 1. Start MHYC | 4. AS Mark East Channel |
| 2. AS Mark Cannae Point | 5. AS Mark Chowder Bay South |
| 3. AS Mark Lady Bay (*) | 6. Finish MHYC |

COURSE 7 (approx. 8.2nm)

- | | |
|-------------------------|-----------------|
| 1. Start MHYC | 4. Shark Island |
| 2. AS Mark Rose Bay (*) | 5. Finish MHYC |
| 3. AS Shark Island | |

COURSE 8 (approx. 8.9nm)

- | | |
|---------------------------|------------------------------|
| 1. Start MHYC | 4. AS Mark Nielsen Park |
| 2. AS Mark Manly West | 5. AS Mark Chowder Bay South |
| 3. AS Mark Manly East (*) | 6. Finish MHYC |

COURSE 9 (approx. 6.1nm)

- | | |
|--------------------------------------|--|
| 1. Start – Grotto Point (Boat Start) | 5. AS Mark Lady Bay (*) |
| 2. AS Mark Manly West | 6. AS Mark Grotto Point |
| 3. AS Mark Manly East | 7. AS Mark Cannae Point |
| 4. AS Mark Cannae Point | 8. Finish – Grotto Point (Boat Finish) |

COURSE DESCRIPTIONS

FLAGSTAFF MARINE THURSDAY TWILIGHT NON-SPINNAKER SERIES

For shortened course mark () refer to SI 4.2.*

Division 3

COURSE 1 (approx. 4.0nm)

- | | |
|-------------------------|----------------|
| 1. Start MHYC | 3. Finish MHYC |
| 2. AS Mark Cannae Point | |

COURSE 2 (approx. 4.5nm)

- | | |
|-----------------------------|--------------------------|
| 1. Start MHYC | 4. AS Mark Edwards Beach |
| 2. AS Mark Cannae Point (*) | 5. Finish MHYC |
| 3. AS Mark Rocky Point | |

COURSE 3 (approx. 4.9nm)

- | | |
|-----------------------|-----------------------|
| 1. Start MHYC | 3. AS Mark Manly East |
| 2. AS Mark Manly West | 4. Finish MHYC |

COURSE 4 (approx. 6.6nm)

- | | |
|---------------------------|---------------------|
| 1. Start MHYC | 4. AS Mark Lady Bay |
| 2. AS Mark Manly West | 5. Finish MHYC |
| 3. AS Mark Manly East (*) | |

COURSE 5 (approx. 5.2nm)

- | | |
|-----------------------------|------------------------|
| 1. Start MHYC | 3. AS Mark Obelisk Bay |
| 2. AS Mark East Channel (*) | 4. Finish MHYC |

COURSE 6 (approx. 6.7nm)

- | | |
|------------------------------|--------------------------|
| 1. Start MHYC | 4. AS Mark Rocky Point |
| 2. AS Mark Cannae Point (*) | 5. AS Mark Edwards Beach |
| 3. AS Mark Chowder Bay North | 6. Finish MHYC |

COURSE 7 (approx. 7.6nm)

- | | |
|-------------------------|-----------------|
| 1. Start MHYC | 3. Shark Island |
| 2. AS Mark Shark Island | 4. Finish MHYC |

COURSE 8 (approx. 7.5nm)

- | | |
|-------------------------|-------------------------|
| 1. Start MHYC | 4. AS Mark Nielsen Park |
| 2. AS Mark Cannae Point | 5. AS Mark Obelisk Bay |
| 3. AS Mark Lady Bay (*) | 6. Finish MHYC |

COURSE 9 (approx. 5.8nm)

- | | |
|--------------------------------------|--|
| 1. Start – Grotto Point (Boat Start) | 4. AS Mark Grotto Point |
| 2. AS Mark Cannae Point | 5. AS Mark Cannae Point |
| 3. AS Mark East Channel (*) | 6. Finish – Grotto Point (Boat Finish) |

COURSE DESCRIPTIONS

FLAGSTAFF MARINE THURSDAY TWILIGHT NON-SPINNAKER SERIES

For shortened course mark () refer to SI 4.2.*

Division 4

COURSE 1 (approx. 2.2nm)

- | | |
|------------------------|--------------------------|
| 1. Start MHYC | 3. AS Mark Edwards Beach |
| 2. AS Mark Rocky Point | 4. Finish MHYC |

COURSE 2 (approx. 4.0nm)

- | | |
|-----------------------------|----------------|
| 1. Start MHYC | 3. Finish MHYC |
| 2. AS Mark Cannae Point (*) | |

COURSE 3 (approx. 4.0nm)

- | | |
|-----------------------------|----------------|
| 1. Start MHYC | 3. Finish MHYC |
| 2. AS Mark Cannae Point (*) | |

COURSE 4 (approx. 5.1nm)

- | | |
|---------------------------|-------------------------|
| 1. Start MHYC | 4. AS Mark Cannae Point |
| 2. AS Mark Manly West | 5. Finish MHYC |
| 3. AS Mark Manly East (*) | |

COURSE 5 (approx. 4.8nm)

- | | |
|-------------------------|------------------------|
| 1. Start MHYC | 3. AS Mark Obelisk Bay |
| 2. AS Mark Lady Bay (*) | 4. Finish MHYC |

COURSE 6 (approx. 5.9nm)

- | | |
|-----------------------------|------------------------|
| 1. Start MHYC | 4. AS Mark Obelisk Bay |
| 2. AS Mark Cannae Point (*) | 5. Finish MHYC |
| 3. AS Mark Lady Bay | |

COURSE 7 (approx. 6.2nm)

- | | |
|-------------------------|----------------|
| 1. Start MHYC | 3. Finish MHYC |
| 2. AS Mark Nielsen Park | |

COURSE 8 (approx. 6.0nm)

- | | |
|-------------------------|-------------------------|
| 1. Start MHYC | 4. AS Mark East Channel |
| 2. AS Mark Cannae Point | 5. Finish MHYC |
| 3. AS Mark Lady Bay (*) | |

COURSE 9 (approx. 5.4nm)

- | | |
|--------------------------------------|--|
| 1. Start – Grotto Point (Boat Start) | 5. AS Mark Grotto Point |
| 2. AS Mark Cannae Point | 6. AS Mark Cannae Point |
| 3. AS Mark Lady Bay | 7. Finish – Grotto Point (Boat Finish) |
| 4. AS Mark Obelisk Bay (*) | |

MHYC FEATURE EVENTS SERIES**Incorporating the Jeanneau Cup Series and the Beneteau Race Series**

Category 7 / Pursuit Results / Divisions as Required

SCHEDULE OF RACES

EVENT	DATE	EVENT NAME	SCHEDULED START TIME	INFORMATION
1	Saturday, 3 September 2022	Commodore's Front Up Cup	1230	Separate Sailing Instructions
2	Saturday, 8 October 2022	Harbour Trek (Beneteau Race Series #1)	1230	Separate Sailing Instructions
3	Saturday, 26 November 2022	Seven Islands Race (Jeanneau Cup Series #1)	1100	Separate Sailing Instructions
4	Saturday, 10 December 2022	Christmas Cup (Beneteau Race Series #2)	1230	Separate Sailing Instructions
5	Saturday, 7 January 2023	January Cup & Two Handed Cup (Jeanneau Cup Series #2)	1230	Separate Sailing Instructions
6	Saturday, 14 January 2023	Chaos Cup & Bedlam Point Cup (Beneteau Race Series #3)	1100	Separate Sailing Instructions
7	Tuesday, 25 April 2023	ANZAC Day Two Up Cup	1230	Separate Sailing Instructions
8	Saturday, 27 May 2023	Welcome to Winter	1230	Separate Sailing Instructions
9	Saturday, 15 July 2023	Christmas in July	1230	Separate Sailing Instructions

FEATURE EVENT SERIES**NOTICE OF RACE****1 RULES**

- 1.1 This NOR shall be adhered to in conjunction with the MHYC Notice of Race.
- 1.2 Refer to MHYC NOR 1 and 2.
- 1.3 Separate Notices of Series may be issued for the Jeanneau Cup and the Beneteau Race Series.

2 ADVERTISING

- 2.1 Advertising on a boat shall comply with MHYC NOR 6.

3 ELIGIBILITY AND ENTRY

- 3.1 All boats shall meet the Eligibility and Entry requirements of MHYC NOR 7.
- 3.2 All boats shall hold a current valid AS Special Regulation Equipment Compliance Certificate Category 7 or higher.
- 3.3 Eligible boats shall enter online and pay the required fee (as per MHYC NOR 7) via the MHYC website by 1700 hours on the Thursday preceding the event.
- 3.4 Late entries may be accepted at the discretion of the Sailing Manager up to 1 hour before the published start time on the day of the event.
- 3.5 Attention is drawn to RRS 76.1 and the Race Committee's right to reject an entry.

4 SAILING INSTRUCTIONS

- 4.1 The Sailing Instructions for each event will be available from the Sailing Office and published on the MHYC website on the Thursday prior to each race.

5 DIVISIONS

- 5.1 The event is a Pursuit Handicap Race per MHYC NOR 22.
- 5.2 Divisions will be as outlined in each event Sailing Instructions.
- 5.3 For divisions and individual boats designated non-spinnaker, only a mainsail and one headsail may be used at any time. The headsail may be poled out but shall be fully hanked or attached by means of a luff groove device to the permanent forestay. Headsails shall not be set flying. No sail shall be attached forward of the point of attachment of the permanent forestay.
- 5.4 Divisional parameters may be constructed and divisions may be formed or abandoned at the discretion of the Sailing Manager or their nominee. These decisions will not be subject to protest or request for redress.

6 RACING AREA

- 6.1 Racing will be conducted in the waters of Lower Middle Harbour and Sydney Harbour.
- 6.2 Courses will be those annexed to the Sailing Instructions.

7 THE START

- 7.1 The Count-Up Start Sequence as per MHYC NOR 22 shall be used.
- 7.2 The Start will be the Club House Start Line per MHYC NOR 16.

8 ALTERNATIVE PENALTIES

- 8.1 For an infringement of RRS Part 2, the Two Turns Penalty (RRS 44.2) shall apply.
- 8.2 For an infringement of any other rule or requirement, the Scoring Penalties of RRS 44.3 shall apply. The penalty shall be computed as a percentage of the number of entries in the relevant division.

9 FINISH LINE

- 9.1 The Finish will be the Clubhouse Finish Line per MHYC NOR 17.

10 PRIZES

- 10.1 Prizes may be awarded to the first three (3) overall place-getters in each division at the discretion of the Sailing Manager at a presentation to be held at MHYC following the race.
- 10.2 Additional prizes or trophies will be as outlined in the Sailing Instructions.
- 10.3 Series prizes may be awarded for the Jeanneau Cup and the Beneteau Cup.

11 MEDIA RIGHTS & DISCLAIMER OF LIABILITY

- 11.1 Refer to MHYC NOR 28 & 29.

WINTER PURSUIT SERIES & LEADING EDGE SERIES

Category 7 / Pursuit Results / Divisions as Required

SCHEDULE OF RACES

RACE	DATE	RACE FORMAT	'COUNT UP' SCHEDULED START TIME
WINTER PURSUIT SERIES			
1	Saturday, 13 May 2023	Inshore Pursuit Race	1230hrs
2	Saturday, 3 June 2023	Inshore Pursuit Race	1230hrs
3	Saturday, 1 July 2023	Inshore Pursuit Race	1230hrs
4	Saturday, 22 July 2023	Inshore Pursuit Race	1230hrs
LEADING EDGE SERIES			
1	Saturday, 5 August 2023	Inshore Pursuit Race	1230hrs
2	Saturday, 12 August 2023	Inshore Pursuit Race	1230hrs
3	Saturday, 19 August 2023	Inshore Pursuit Race	1230hrs
4	Saturday, 26 August 2023	Inshore Pursuit Race	1230hrs

WINTER PURSUIT & LEADING EDGE SAILING INSTRUCTIONS**1 RULES**

- 1.1 As per NOR 1 and 2.
- 1.2 For boats entered as non-spinnaker, only a mainsail and one headsail may be used at any time. The headsail may be poled out but shall be fully hanked or attached by means of a luff groove device to the permanent forestay. Headsails shall not be set flying. No sail shall be attached forward of the point of attachment of the permanent forestay.

2 SCHEDULE OF RACES

- 2.1 Racing is scheduled as per the Schedule of Races for the Leading Edge Series.

3 DIVISIONS

- 3.1 Yachts will be allocated to Divisions appropriate to the number of entries received for Spinnaker and Non-Spinnaker categories, based on yachts performance.
- 3.2 Division allocation is subject to the receipt of entries and shall be structured by the Sailing Manager at their absolute discretion. Allocation to Divisions shall not be the subject to protest or constitute grounds for redress. This amends RRS 60.1 and 62.3.4
- 3.3 Class Flags for the Winter Pursuit and Leading Edge Series Races are as follows:

CLASS / DIVISION	FLAG
Division 1	Code Flag 'D'
Division 2	Code Flag 'E'

4 THE COURSE

- 4.1 The course of the day will be selected from those listed in 'Winter Pursuit & Leading Edge Series Courses', which is attached to these Sailing Instructions. A course numeral will be displayed with or prior to the Attention Signal signifying the course selected for the day.
- 4.2 Courses may be shortened at the discretion of the Sailing Manager. Should Code Flag "S" be displayed with the Attention Signal, the race will automatically be shortened and all yachts should proceed to the finish line after having rounded the mark indicated by an asterisk (*).

5 THE START

- 5.1 The attention signal shall not be made before 1220hrs.
- 5.2 The start line will be the Clubhouse Start in accordance to MHYC NOR 16.
- 5.3 The start shall be a count-up start in accordance to NOR 22.

START SEQUENCE	
1220	Attention Sound Signal and course number displayed
1230	Start Sound Signal and start handicap count-up clock

- 5.4 There will be no individual recall signals. A boat on the course side of the starting line for her designated start time will be penalised 5 minutes plus the difference between her nominated start time and actual start time unless she returns and restarts. This amends RRS 29 and 63.1.

6 THE FINISH

- 6.1 The finish line will be the Clubhouse finish line in accordance with MHYC NOR 17.

7 HANDICAPS

- 7.1 Starting handicap numbers will be allocated at the discretion of the Sailing Manager or their nominee and adjusted for subsequent races based on PHS calculation.
- 7.2 The Sailing Manager or their nominee may at their absolute discretion review any boat's handicap where they are of the opinion that due to anomaly, error or change of racing trim or equipment, the handicap is considered unfair or unreasonable.
- 7.3 Allocated handicaps shall not be the subject of protest or dispute. This amends RRS 60.1 & 62.
- 7.4 Handicaps are published on the day of racing on the MHYC website and noticeboard.

8 TIME LIMIT

- 8.1 The time limit shall be 1530 hours. However, if the leading yacht finishes within the time limit, then other yachts will be timed in until 1600 hours. Boats not finishing within the time limit or extension shall be ranked DNF.
- 8.2 Boats retiring from racing comply with NOR 20.

9 PROTESTS

- 9.1 The Sailing Committee looks to competitors to enter the event in the right spirit, observe the Racing Rules of Sailing and complete a one or two turns penalty (RRS 44) or retire immediately if they breach them. Should competitors feel the need to formally protest, this should be done in accordance with NOR 24.

10 SCORING

- 10.1 The Low Point System, Appendix A of the RRS including A5.3 shall apply.
- 10.2 There are four (4) races scheduled in each of the Winter Pursuit Series and Leading Edge Series. Two (2) races are required to be completed to constitute a series. No scores shall be excluded.
- 10.3 Abandoned races will not be re-sailed.
- 10.4 The series pointscore will be open to series and casual entrants.
- 10.5 A boat's points shall not be transferred with a change of ownership or division.

11 PRIZES

- 11.1 Prizes may be awarded at a post-race presentation. Prizes not collected at that time shall be forfeited.
- 11.2 Additional prizes may be awarded.

COURSE DESCRIPTIONS

WINTER PURSUIT & LEADING EDGE SERIES

COURSE NOTES:

1. All Marks shall be rounded to Starboard
2. Division 2 boats shall omit marks noted (x)
3. All divisions please refer to shortening course SI 4.2 (*)

Course 1 (Div 1 – 10.0nm, Div 2 – 8.8nm approx.)

- | | |
|-------------------------|------------------------------|
| 1. Start at MHYC | 7. AS Mark Grotto Point |
| 2. AS Mark Cannae Point | 8. AS Mark Cannae Point (*) |
| 3. AS Mark Grotto Point | 9. AS Mark Edwards Beach (x) |
| 4. AS Mark Manly West | 10. AS Mark Lady Bay (x) |
| 5. AS Mark Manly East | 11. AS Mark Edwards Beach |
| 6. AS Mark Cannae Point | 12. Finish at MHYC |

Course 2 (Div 1 – 10.9nm, Div 2 – 9.9nm approx.)

- | | |
|-------------------------|-----------------------------|
| 1. Start at MHYC | 5. AS Mark East Channel |
| 2. AS Mark Lady Bay | 6. AS Mark Grotto Point (x) |
| 3. AS Mark Grotto Point | 7. AS Mark East Channel (x) |
| 4. AS Mark Lady Bay (*) | 8. Finish at MHYC |

Course 3 (Div 1 - 11.0nm, Div 2 - 10.0nm approx.)

- | | |
|----------------------------------|----------------------------------|
| 1. Start at MHYC | 5. AS Mark Cannae Point |
| 2. AS Mark Cannae Point | 6. AS Mark Chowder Bay South (x) |
| 3. AS Mark Lady Bay | 7. Finish at MHYC |
| 4. AS Mark Chowder Bay South (*) | |

Course 4 (Div 1 – 11.6nm, Div 2 – 10.6nm approx.)

- | | |
|---------------------------|------------------------------|
| 1. Start at MHYC | 7. AS Mark Cannae Point |
| 2. AS Mark Cannae Point | 8. AS Mark Rocky Point (x) |
| 3. AS Mark Rocky Point | 9. AS Mark Edwards Beach (x) |
| 4. AS Mark Edwards Beach | 10. AS Mark Cannae Point (x) |
| 5. AS Mark Manly West | 11. Finish at MHYC |
| 6. AS Mark Manly East (*) | |

Course 5 (Div 1 – 11.8nm, Div 2 10.6nm approx.)

- | | |
|-----------------------------|-----------------------------|
| 1. Start at MHYC | 5. AS Mark Manly West |
| 2. AS Mark Manly West | 6. AS Mark Manly East |
| 3. AS Mark Manly East | 7. AS Mark East Channel (x) |
| 4. AS Mark East Channel (*) | 8. Finish at MHYC |

Course 6 (Div 1 – 12.5nm, Div 2 10.1nm approx.)

- | | |
|-------------------------|---------------------|
| 1. Start MHYC | 4. Fort Denison (x) |
| 2. AS Mark Rose Bay (*) | 5. Finish MHYC |
| 3. AS Mark Point Piper | |

MHYC WINTER SPRINT SERIES

Category 7 / PHS Results / Divisions as Required

SCHEDULE OF RACES

RACE	DATE	RACE FORMAT	SCHEDULED START TIME	INFORMATION
1 & 2	Saturday, 20 May 2023	Windward-Leeward	1230	MHYC Winter Sprint Sailing Instructions
3 & 4	Saturday, 17 June 2023	Windward-Leeward	1230	MHYC Winter Sprint Sailing Instructions
5 & 6	Saturday, 8 July 2023	Windward-Leeward	1230	MHYC Winter Sprint Sailing Instructions
7 & 8	Saturday, 29 July 2023	Windward-Leeward	1230	MHYC Winter Sprint Sailing Instructions

MHYC WINTER SPRINT SERIES

Category 7 / PHS Results / Divisions as Required

SAILING INSTRUCTIONS

1 RULES

- 1.1 Refer to NOR 1 & 2.
- 1.2 Competitors are reminded of the requirement under NOR 13 to pass on the safe water side of all Harbour Cardinal Marks.

2 SCHEDULE OF RACES

- 2.1 Racing is scheduled as per the Schedule of Races above.

3 CLASS FLAGS & DIVISIONS

- 3.1 Class Flags for the Winter Sprint Series Races are as follows:

CLASS / DIVISION	FLAG
Division 1	Code Flag 'D'
Division 2	Code Flag 'E'
Adams 10 Division	Adams 10 Insignia on White background
Farr 40 Division	Farr 40 Insignia on White background

- 3.2 Division allocation is subject to the receipt of entries and shall be structured by the Race Committee at its absolute discretion. Allocation to Divisions shall not be the subject to protest or constitute grounds for redress. This amends RRS 60.1 and 62.

4 THE COURSES

- 4.1 The course to be sailed will be displayed on a Course Board on the CV, preceded by the letter 'W', to indicate the number of roundings of the Windward Mark.

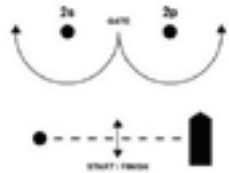
COURSE SIGNAL	DIVISION	COURSE
W1	Division 1, Adams 10, Farr 40	Start – 1a – Finish
	Division 2	Start – 1 – Finish
W2	Division 1, Adams 10, Farr 40	Start – 1a – Gate – 1a – Finish
	Division 2	Start – 1 – Gate – 1 – Finish
W3	Division 1, Adams 10, Farr 40	Start – 1a – Gate – 1a – Gate – 1a – Finish
	Division 2	Start – 1 – Gate – 1 – Gate – 1 – Finish

- 4.2 All Marks are rounded to PORT except the Gate. If only one Gate Mark is laid, all boats shall round that Mark to Port.
- 4.3 The race committee may shorten any Course in accordance with RRS 32.
- 4.4 A course change will be signaled as per RRS 33. Code flag C will be displayed along with a new bearing to the next mark of the course. The new mark will be the same colour with the addition of a Black band. Subsequent legs may be changed without further signaling to maintain the course shape.

5 MARKS

- 5.1 Marks are described as follows:

COURSE MARKS	MARK DESCRIPTIONS
Start /Finish Mark	Yellow Inflatable Mark
Mark 1 (Windward Mark for Div. 2)	Yellow Inflatable Mark
Mark 1a (Windward Mark for Div. 1)	Orange Inflatable Mark
Gate Marks 2s & 2p	Orange Inflatable Mark/s
Change Mark 1a	Yellow Inflatable Mark with Black Band
Change Mark 1	Orange Inflatable Mark with Black Band



- 5.2 The bearing to the first Mark from the Start Line may be displayed prior to or with the Warning Signal.
- 5.3 The Gate will be laid approximately 50m to windward of the Start Line and may be laid after the starting signal.

6 THE START

- 6.1 The start shall be an On Water Start in accordance with MHYC NOR 18.
- 6.2 Competing boats shall report to the race committee prior to the Warning Signal each day, on starboard tack with mainsail hoisted, to confirm their intention to race. Boats that cannot be identified prior to their Warning Signal may be scored DNC. This amends RRS 63.1.
- 6.3 The starting line will be between a staff or halyard displaying an orange flag at the starboard end and the course side of the port-end start mark.
- 6.4 Prior to her Preparatory Signal, a boat shall keep clear of the starting line and all boats about to start or which have started. Attention is drawn to RRS 23.

7 THE FINISH

- 7.1 The finishing line will be between a staff or halyard displaying a blue flag at the port end and the course side of the starboard end finish mark.

8 TIME LIMIT

- 8.1 The Time Limit for all boats will be 30 minutes after the first boat in the Division has finished.
- 8.2 Boats retiring from racing comply with NOR 20.
- 8.3 If all boats in a class or division are scored DNF, the race committee shall not abandon the race. This amends RRS 35.

9 SCORING

- 9.1 The Low Point System, Appendix A of the RRS including A5.3 shall apply.
- 9.2 Eight (8) races are scheduled. A minimum of three (3) races shall be completed to constitute the Series. One (1) worst score will be discarded after four (4) races are completed.
- 9.3 Abandoned races not re-started on the scheduled race day will not be resailed.

MHYC MAJOR REGATTAS

In addition to its busy club racing program and regularly hosting class championships and regattas, Middle Harbour Yacht Club hosts a number of regattas which are integral to the fabric of sailing in Sydney.

Celebrating its 44th year in 2022, the **Nautilus Marine Sydney Short Ocean Racing Championship** continues to meet the constant evolution of yacht racing. Always an innovative event, the Regatta has played a significant role in the transition from the IOR to IMS and then to the IRC rating rules used to handicap ocean racing. It has also been the major local regatta of the year for one-design classes. For many yacht owners and their crews, this two-day regatta sailed on passage and windward-leeward courses off Sydney's Heads is vital to their preparations for the Rolex Sydney Hobart Yacht Race.

The **Nautilus Marine Sydney Harbour Regatta**, now entering its eighteenth year, is the largest keelboat regatta in Sydney. Originally established as the lead event for Sydney Harbour Week, to celebrate our harbour's diversity, the Sydney Harbour Regatta has rightly earned its reputation as Sydney's 'Sailing Spectacular', providing a perfect opportunity to display to spectators the thrill and excitement that our sport offers with racing inshore and offshore on up to eight course areas.

In the **MHYC Women's Regatta**, Open Keelboat and One Design divisions are contested by yachts with all female crews or mixed crews with a female helm. Two short windward-leeward races are followed by a passage race and a relaxed presentation ceremony at the club.

MHYC will conduct the following Major Regattas in 2022-2023:

DATE	EVENT	EVENT WEBSITE
Saturday & Sunday 26-27 November 2022	Nautilus Marine Sydney Short Ocean Racing Championship (SSORC)	www.ssorc.mhyc.com.au
Saturday & Sunday 4-5 March 2023	Nautilus Marine Sydney Harbour Regatta (SHR)	www.shr.mhyc.com.au
Saturday, 6 May 2023	MHYC Women's Regatta	www.mhyc.com.au



MHYC WOMEN'S SAILING PROGRAM

Middle Harbour Yacht Club has an active group of women sailors who participate in every aspect of the sport and club. Its program also provides women's sailing events that provide additional opportunities for women to expand their sailing skills and experience.

Thursday Twilight Women's Pointscore

The popular Thursday Twilight Series includes twenty three races this year, six of which make up the Women's Twilight Pointscore. Four divisions of yachts, from family cruisers to high tech racing machines, share the joy of racing on our spectacular harbour. Everyone enjoys returning to the lively social atmosphere of MHYC as the sun goes down to enjoy a meal, wine, and good friends.

Sydney Harbour Women's Series

MHYC and five other clubs are cooperating to run the Sydney Harbour Women's Series over the 2022-2023 season. Six inshore passage races will include divisions for all-female crews and mixed crews with female helms.

MHYC Women's Regatta

The MHYC Women's Regatta was first held in 2018 and attracts a strong fleet from a variety of clubs. The MHYC Women's Regatta will be held this season on Saturday May 6 with two short windward-leeward races followed by a longer passage race.

Australian Women's Keelboat Regatta

The AWKR is held at Royal Melbourne Yacht Squadron on the Queen's Birthday weekend in June each year. This event draws crews from around the country and we hope that MHYC will be represented again.

SheSails

Run by Australia Sailing, SheSails is all about enjoying your sailing adventure in a fun, friendly and safe environment. Find out more about the program and other sailing opportunities around the country by visiting shesails.org.au.



MHYC CRUISING DIVISION

Where Sailing meets Adventure, Exploration, Support and Camaraderie



Our purpose is to:

- Encourage and support members to undertake non-competitive cruising activities on their own vessel.
- Encourage competent and safe seamanship.
- Organise cruises in company, from single day events to longer cruises further afield.
- Hold informative monthly meetings to socialise, share knowledge, organise events and listen to guest speakers on many topics.
- Link with other cruisers and clubs outside of MHYC to encourage cruising overall.

Meetings are held on the third Monday of each month at MHYC in the Harbourview at 7.30pm with a BYO BBQ starting at 6:30pm.

Our Compass Rose magazine comes out monthly. You can view past editions from the MHYC website.

You can find us on **Facebook**: Middle Harbour Yacht Club Cruising Division

Cruising Division Website: Found through the MHYC Website



Sailing Handbook 2022-2023

MHYC CRUISING DIVISION ANNUAL PROGRAM		
<i>Date</i>	<i>Activity</i>	<i>Start</i>
Sunday, 18 September 2022	Sailing Sunday at MHYC and Safety Talk	1000
Monday, 19 September 2022	BBQ & Cruising Division Meeting	1830
Saturday, 1 October 2022	Long Weekend Cruise to Pittwater	
Sunday, 2 October 2022	Long Weekend Cruise to Pittwater	
Monday, 3 October 2022	Long Weekend Cruise to Pittwater	
Monday, 17 October 2022	BBQ & Cruising Division Meeting	1830
Sunday, 23 October 2022	Make A Wish Cruise	
Sunday, 30 October 2022	Sailing Sunday and Safety Training Workshop	1000
Sunday, 6 November 2022	Sailing Sunday	1000
Saturday, 19 November 2022	Tapas-Tie-Up, Sydney Harbour	
Sunday, 20 November 2022	Tapas-Tie-Up, Sydney Harbour	
Monday, 21 November 2022	BBQ & Cruising Division Meeting	1830
Friday, 16 December 2022	Cruising Division Xmas Party	
Monday, 19 December 2022	Cruising Division BBQ (No Formal Meeting)	1830
Sunday, 1 January 2023	New Year's Cruise (Destination TBC)	
Monday, 2 January 2023	New Year's Cruise (Destination TBC)	
Tuesday, 3 January 2023	New Year's Cruise (Destination TBC)	
Wednesday, 4 January 2023	New Year's Cruise (Destination TBC)	
Thursday, 5 January 2023	New Year's Cruise (Destination TBC)	
Friday, 6 January 2023	New Year's Cruise (Destination TBC)	
Saturday, 7 January 2023	New Year's Cruise (Destination TBC)	
Sunday, 8 January 2023	New Year's Cruise (Destination TBC)	
Monday, 16 January 2023	CD BBQ (No formal meeting)	
Saturday, 18 February 2023	Breakfast talk followed by Sailing Sunday	1000
Monday, 20 February 2023	BBQ & Cruising Division Meeting	1830
Saturday, 18 March 2023	Cruising Get Together on Sydney Harbour	
Sunday, 19 March 2023	Cruising Get Together on Sydney Harbour	
Monday, 20 March 2023	BBQ & Cruising Division Meeting	1830
Sunday, 26 March 2023	Sailing Sunday	1000
Friday, 7 April 2023	Easter Cruise (Destination TBC)	
Saturday, 8 April 2023	Easter Cruise (Destination TBC)	
Sunday, 9 April 2023	Easter Cruise (Destination TBC)	
Monday, 10 April 2023	Easter Cruise (Destination TBC)	
Monday, 17 April 2023	BBQ & Cruising Division Meeting	1830
Monday, 15 May 2023	BBQ & Cruising Division Meeting	1830
Saturday, 10 June 2023	Queen's Birthday Cruise (Destination TBC)	
Sunday, 11 June 2023	Queen's Birthday Cruise (Destination TBC)	
Monday, 12 June 2023	Queen's Birthday Cruise (Destination TBC)	
Saturday, 17 June 2023	Cruising Group Get Set Safety Checks and Raft-Up	
Sunday, 18 June 2023	Cruising Group Get Set Safety Checks and Raft-Up	
Monday, 19 June 2023	BBQ & Cruising Division Meeting	1830
Sunday, 2 July 2023	Cruising Division Long Lunch	1200
Monday, 17 July 2023	BBQ & Cruising Division Meeting	1830
Sunday, 6 August 2023	On-land event	
Monday, 14 August 2023	BBQ & Cruising Division Meeting	1830

MHYC CHARITY & CORPORATE EVENTS

Middle Harbour Yacht Club is the ideal venue to host a Charity Event, Corporate or Industry Day Regatta, for fun, social racing and pre and post regatta activities in the clubhouse and on the beach.

An MHYC Regatta is a great way to enjoy a day out on the water whilst raising money for a worthy cause or providing a very special platform for networking with colleagues and clients.

Charity Regattas at MHYC have helped raise significant funds over many years for various charities. If you would like to take part as a sponsor, by entering a team, or to donate the use of your boat to help raise funds for a worthy cause, please contact MHYC Sailing Office for more information.

MHYC will host the following key Charity Events and Industry Day Regattas in 2022-2023:

DATE	EVENT	EVENT WEBSITE
Sunday, 23 October 2022	Make a Wish Cruise	www.makeawish.org.au
Friday, 28 October 2022	Giant Steps	www.giantstepsregatta.net.au
Friday, 11 November 2022	ASX Refinitiv	www.asxrefinitivcharity.com.au
Friday, 10 February 2023	Spurious Challenge	rfi.com.au/spuriouschallenge
Friday, 24 February 2023	SAP Redkite Regatta	www.redkite.org.au
Friday, 24 March 2023	Renewable Energy Cup	www.renewcup.org



SAILABILITY MIDDLE HARBOUR

Sailability Middle Harbour (SMH) sails out of Middle Harbour Yacht Club (MHYC) at The Spit, Mosman.

Middle Harbour Yacht Club is an ideal venue for Sailability with handy access parking, easy wheelchair pontoon access and a personal transfer crane set up if required. Sailing times are from 9.00 am to 1.00 pm on the second and last Sunday of each month. Usually each sail is for about 40 minutes. The cost is \$5.00 per sail or \$40 per year to join SMH which offers sailors a relaxing Sunday sail and the opportunity to learn to sail solo.

Our fleet consists of six Hansa 303 keelboats, each capable of taking out a sailor and a volunteer together. Lifejackets are provided and a safety boat is on hand.

If you would like to sail or volunteer to help, please call Sally O'Neill on 0411 886 539.

SAILABILITY MIDDLE HARBOUR CALENDAR

Sunday, 11 September 2022	0900	Hansa 303	Recreational Sailing
Sunday, 25 September 2022	0900	Hansa 303	Recreational Sailing
Sunday, 9 October 2022	0900	Hansa 303	Recreational Sailing
Sunday, 30 October 2022	0900	Hansa 303	Recreational Sailing
Sunday, 13 November 2022	0900	Hansa 303	Recreational Sailing
Sunday, 27 November 2022	0900	Hansa 303	Recreational Sailing
Sunday, 11 December 2022	0900	Hansa 303	Recreational Sailing
Sunday, 8 January 2023	0900	Hansa 303	Recreational Sailing
Sunday, 29 January 2023	0900	Hansa 303	Recreational Sailing
Sunday, 12 February 2023	0900	Hansa 303	Recreational Sailing
Sunday, 26 February 2023	0900	Hansa 303	Recreational Sailing
Sunday, 12 March 2023	0900	Hansa 303	Recreational Sailing
Sunday, 26 March 2023	0900	Hansa 303	Recreational Sailing
Sunday, 9 April 2023	0900	Hansa 303	Recreational Sailing
Sunday, 30 April 2023	0900	Hansa 303	Recreational Sailing
Sunday, 14 May 2023	0900	Hansa 303	Recreational Sailing
Sunday, 28 May 2023	0900	Hansa 303	Recreational Sailing
Sunday, 11 June 2023	0900	Hansa 303	Recreational Sailing
Sunday, 25 June 2023	0900	Hansa 303	Recreational Sailing
Sunday, 9 July 2023	0900	Hansa 303	Recreational Sailing
Sunday, 30 July 2023	0900	Hansa 303	Recreational Sailing
Sunday, 13 August 2023	0900	Hansa 303	Recreational Sailing
Sunday, 27 August 2023	0900	Hansa 303	Recreational Sailing

MHYC SPECIAL AWARDS AND PERPETUAL TROPHIES

Clubmanship Awards

These are presented at the Annual Prize-giving presentation to members who have made an outstanding contribution to the Club during the year.

Tig Thomas Distinction Trophy

Gilbert (Tig) Thomas was not only just a great champion of our club, but also a champion sailor competing at home and overseas. The Tig Thomas Distinction Trophy is in recognition of his feats and to recognise MHYC sailing members who have competed in interclub events and major championships both in Australia and around the world.

Norman G. Booth Trophy: Awarded to a skipper or crew, other than an Annual Pointscore winner, from any Division, nominated for his/her consistent racing with the MHYC and with emphasis on enthusiasm, improvement, sportsmanship and Clubmanship throughout the season.

The R.B. Cooper Perpetual Award for Voluntary Service: Presented to a Club Member whose outstanding voluntary service is deemed to have contributed most to the affairs and wellbeing of MHYC in a membership year.

The MHYC Flag Officers Participants Award: Presented annually to the MHYC Yacht having participated in the greatest number of MHYC Events in the Winter and Summer Seasons.

Crew Member of the Year Award: Presented to an esteemed crew member, displaying the characteristics of a desirable MHYC Member, someone other crew members would aspire to emulate, and nominated from of a yacht in a division of the Annual Pointscore during the season.

The Jules Trophy for MHYC Yachtswoman of the Year is awarded to a member who sails regularly from MHYC, is enthusiastic and active participant in the sport of sailing and shows good seamanship and sportsmanlike conduct.

Perpetual Trophies

MHYC has a wealth of perpetual trophies awarded each year for success in a variety of races and series, the key ones being:

Gillawa Shield presented by the late A. J. Wildman for the best performed MHYC yacht in recognised offshore races and series on IRC.

Gillawa Plate presented to the best performed MHYC yacht in recognised offshore races and series on PH5.

The Nigel Holman Memorial Trophy This Trophy was struck by the many MHYC members and friends of the late Nigel Holman, who sadly died after a long illness in November 2007.

Nigel was a member of Middle Harbour Yacht Club for over 23 years and was a keen offshore yachtsman. His various yachts, all but one named "Cuckoos Nest" carried the sail number MYC2 this reflected his membership at Manly Yacht Club, adjacent to his home in Manly. A regular and successful entrant in the major East Coast Offshore Races, Nigel was also an enthusiastic club and twilight sailor. Nigel's yacht "Cuckoos Nest" won the Cruising Yacht Club of Australia's Tattersall's Cup for Overall Winner on Corrected Time in the 49th Sydney to Hobart Yacht Race. It is in this spirit, that this



Sailing Handbook 2022-2023

Trophy is to be presented annually to the best placed yacht representing MHYC in the Tattersall's Cup in the annual Cruising Yacht Club of Australia, Sydney to Hobart Yacht Race.

Ocean Pointscore Trophy presented in 2009 by Pauline and Andrew Dally for annual competition in the Ocean Pointscore Series. Awarded to the winning boat in the Performance Handicap Series.

The Siandra Trophy is presented to the MHYC yacht best placed on IRC in the first Blue Water Pointscore Race of the season.

The Premiers Cup presented annually to the winning yacht in the Club's IRC Inshore Annual Pointscore. The trophy was first presented in 2000 by the Premier of NSW for competition in the IRC & IMS Classes for the MHYC Coffs Coast Sail Week. In 2001 the trophy lapsed and was rededicated by the Flag Officers for the Clubs new and growing Inshore IRC Division.

The John Eyles Trophy - This Trophy was originally won by the yacht "Fujitsu Dealers" John Eyles, as First Place in IMS Division III in the 1990 Sydney to Hobart Yacht Race. John was a long time MHYC Member and campaigned the yacht from MHYC. In 2007 John granted the Trophy to MHYC as a token of appreciation. The Club dedicated the Trophy to the Winning Yacht in the Open Division PHS Annual Pointscore.

The Asiatic Trust Trophy - This Trophy was originally awarded by the Asiatic Trust Company Ltd for annual competition in the Sydney to Vanuatu Yacht Race in the I.O.R. Division. The Trophy was first won in 1984 by Spirit of Vanuatu and again in 1986 by Ruff 'N Tumble, MHYC. The Vanuatu Race lapsed and the Trophy was held in Trust for many years by Middle Harbour Yacht Club on behalf of Lindsay Rose, owner of Ruff 'N Tumble, who, in conjunction with John Walsh had restored the Trophy after it was damaged in the Cyclone that ravaged Vanuatu in 1986. In 2006 Lindsay Rose granted the Trophy in Perpetuity to MHYC to be awarded for Annual Competition in the Adams 10 Class PHS Annual Pointscore.

The Ben Nossiter Perpetual Trophy - This trophy was originally presented to MHYC by the Police Association in recognition of the enduring relationship between the Adams 10 fleet and the Police Games. The trophy, which is the original butt from the starter's shotgun used by MHYC until the use of guns was outlawed, has now been re-dedicated to Ben Nossiter, in recognition of his long career and outstanding achievements at MHYC in his Adams 10, Sirius. The trophy will be awarded to the Adams 10 which has the best PHS result for all the sprint races in the Annual Pointscore.

Heaven Can Wait Trophy - Presented annually to the winning yacht in the Clubs No 1 Inshore Division, Annual Pointscore, on Performance Handicap. The Trophy was first presented to MHYC by Warren Johns in 1993 for Competition in the MHYC Sydney to Southport Race. The Trophy lapsed in 1995. In 2004 the Flag Officers rededicated the Trophy for the Clubs No 1 Inshore Division.





CORPORATE SIGNAGE

SHOP FRONT | WINDOW GRAPHICS | INDOOR & OUTDOOR SIGNS



BOAT SIGNS & WRAPS

REGOS, NAMES & CUSTOM GRAPHICS



PH. 0420 453 805

info@beyondprinting.sydney

BEYOND
PRINT • PROMO • SIGNS

UNIT 31, 9 POWELLS ROAD, BROOKVALE

APPENDIX 1

MARK DESCRIPTIONS & LOCATIONS

FIXED AUSTRALIAN SAILING (AS) MARKS

Previously Yachting Australia or Yachting New South Wales (YA Marks), these are spar shape and yellow in colour. Locations are approximate and marks may have moved or be absent after heavy weather.

ID	LOCATION	ID	LOCATION
CBN	AS Mark Chowder Bay (North) Lat. 33-50-357 Lon. 151-15-593	NP	AS Mark Nielsen Park Lat. 33-51.029 Lon. 151-15-874
CBS	AS Mark Chowder Bay (South) Lat. 33-50-526 Lon. 151-15-321	OB	AS Mark Obelisk Bay Lat. 33-49-872 Lon. 151-15-923
CP	AS Mark Cannae Point Lat. 33-48-847 Lon. 151-16-895	PP	AS Mark Point Piper Lat. 33-51-754 Lon. 151-15-041
EB	AS Mark Edwards Beach Lat. 33-49-252 Lon. 151-15-283	RB	AS Mark Rose Bay Lat. 33-51-747 Lon. 151-15-972
EC	AS Mark East Channel Lat. 33-50-514 Lon. 151-16-176	RP	AS Mark Rocky Point Lat. 33-49-432 Lon. 151-15-346
GP	AS Mark Grotto Point Lat. 33-48-987 Lon. 151-16-133	SI	AS Mark Shark Island Lat. 33-51-626 Lon. 151-15-541
LB	AS Mark Lady Bay Lat. 33-50-081 Lon. 151-16-612	SP	AS Mark Sow & Pigs SW of reef (<i>Beashe</i> Buoy) Lat. 33-50-305 Lon. 151-16-177
ME	AS Mark Manly East Lat. 33-48-196 Lon. 151-16-726	TB	AS Mark Taylor Bay Lat. 33-50-859 Lon. 151-14-943
MW	AS Mark Manly West Lat. 33-48-176 Lon. 151-16-625		

LAID MHYC MARKS

MHYC Inflatables (Club Marks), cylindrical shape, yellow or orange in colour.

Locations are approximate and marks may be optimised to suit wind and sea conditions.

ID	NAME	LOCATION
NH	MH Inflatable North Head	West of tip of North Head
CB	MH Inflatable Chowder Bay North	South East of AS Mark Chowder Bay
SR	MH Inflatable South Reef	North East of Sow & Pigs Reef
MP	MH Inflatable Manly Point	South of Manly Point
GP	MH Inflatable Grotto Point	In the vicinity of Grotto Point Light
EB	MH Inflatable Edwards Beach	North East of AS Mark Edwards Beach
CP	MH Inflatable Cannae Point	South of Quarantine Head
RB	MH Inflatable Reef Beach	North East of Reef Beach
OB	MH Inflatable Obelisk Bay	South of AS Mark Obelisk Bay
BP	MH Inflatable Bedlam Point	Bedlam Point
AB	MH Inflatable Abbotsford Bay	Abbotsford Bay

HARBOUR ISLAND MARKS

Harbour Islands Locations as per Chart AUS200.

NAME	LOCATION
Shark Island	West Cardinal Mark on the Western side of Shark Island Port Lateral Mark (lighthouse) on the Northern side of Shark Island
Clarke Island	Starboard Lateral Mark on the Southern side of Clarke Island
Fort Denison	Starboard Lateral mark on Southern side of Fort Denison
Sow & Pigs Reef	Area bounded by Cardinal Marks surrounding Sow and Pigs Reef

Planning for your future starts now

Invest in commercial property with one of Australia's leading direct property fund managers.

Diversification and regular income... if you're building wealth, consider investing with Charter Hall.

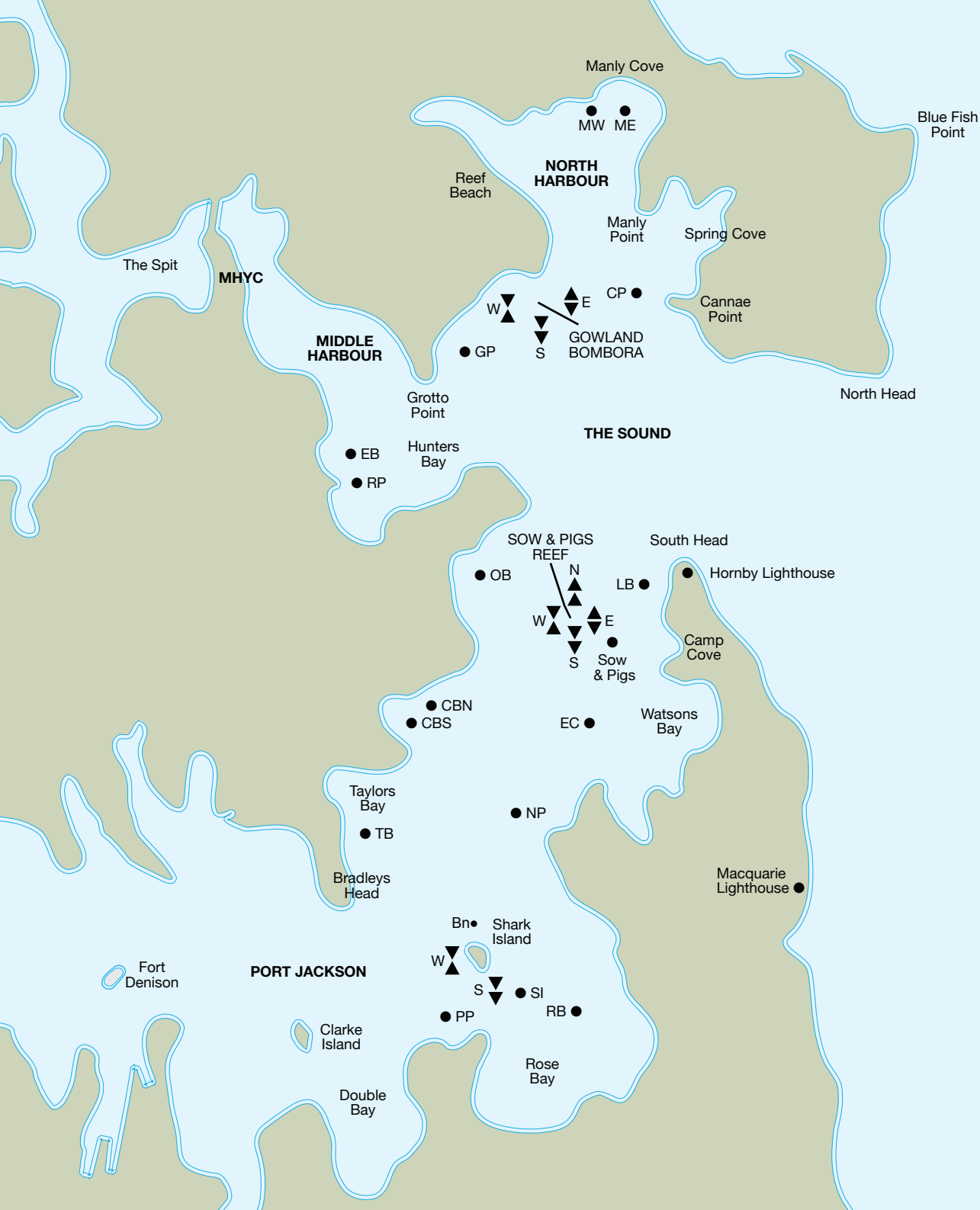
Whether you've invested before, or are new to creating wealth, an investment in direct property could be an option to get that secure future started now.

Investment in unlisted direct property funds can be a cornerstone in a balanced portfolio, giving you diversification, access to regular income and returns that have a low correlation to listed investments. Charter Hall Direct has funds that invest in high quality, long leased commercial property that are open now for investment.

For more information contact us:
1300 652 790
directproperty@charterhall.com.au
charterhall.com.au/futureplanning



Past performance is not a reliable indicator of future performance. This does not constitute an offer for the issue, sale or purchase of any securities or any recommendation in relation to investing in any asset. This information has been prepared without taking account of any particular investor's objectives financial situation or needs. Charter Hall Direct Property Management Limited (ACN:073 623 784 AFSL:226849) ("CHDPML") does not make any representation or warranty as to the accuracy or completeness of any statement above, including any forward looking statement. Australia's leading direct property fund manager based on Funds Under Management (FUM) from the Core Property - Australian Unlisted Property Funds Report. © Charter Hall Group.



NOT TO SCALE

CAUTION: OBSERVE CARDINAL MARKS AT GOWLAND BOMBORA, SOW & PIGS REEF, SHARK ISLAND.

YOU'RE THE SKIPPER
YOU'RE RESPONSIBLE!

INTERNATIONAL CODE FLAGS

A		B		C		D	
E		F		G		H	
I		J		K		L	
M		N		O		P	
Q		R		S		T	
U		V		W		X	
Y		Z					

NUMERAL PENNANTS

1		2		3		4	
5		6		7		8	
9		0					

PENNANTS

Answering Pennant



1st Substitute



Enjoy the moment
We've got you covered

Call 1300 780 533 or visit nautilusinsurance.com.au

Nautilus Marine Boat Insurance is issued by NM Insurance Pty Ltd (ABN 34 100 633 038, AFSL 227 186), under a binding authority from the insurer, Zurich Australian Insurance Ltd, AFSL 232 507. Read the Product Disclosure Statement and Target Market Determination at nautilusinsurance.com.au before buying or renewing the product.



Boat Bike Caravan

NM Insurance
Powered