

Transport NSW Maritime

Skippers Briefing

2020

Rianna James / Lisa Nott
Boating Safety Officer
Sydney Harbour



Agenda

1. Lifejacket wear rules – tenders
2. Inflatable lifejackets
3. Mandatory safety equipment
4. Correct navigation lighting
5. Rules & regs – sailing events
6. Incident reporting
7. Expired flare collection

Lifejacket Wear Rules

Tenders

Boating activity/ Vessel type	Enclosed waters Lifejacket requirements
Children under 12 years of age	Level 50S or greater: <ul style="list-style-type: none">• At all times on a vessel less than 4.8m• When in an open area of a vessel less than 8m that is underway.
On all boats less than 4.8m (unless specified)	Level 50S or greater at all times when: <ul style="list-style-type: none">• Boating between sunset and sunrise• Boating on alpine waters• Boating alone (without an accompanying person 12 years of age or more).



WEAR A LIFEJACKET
DON'T RISK YOUR LIFE



Inflatable Lifejackets

Pre-wear

Gas cylinder (& auto-firing canister) screwed in



Keep cord free



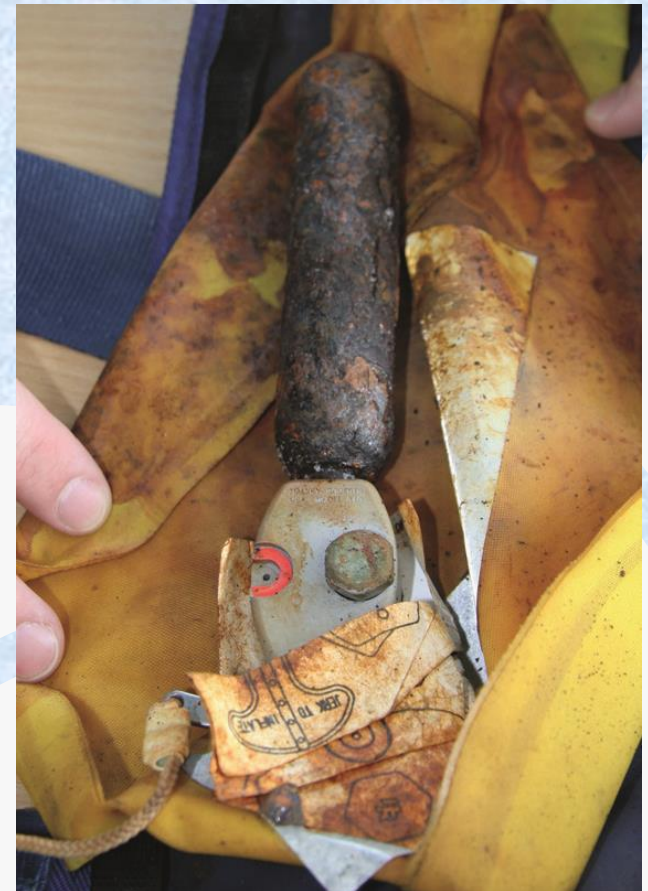


Inflatable Lifejackets

Annual Servicing

Inflatable lifejackets must be serviced according to the manufacturers instructions and service records kept.

1. Can it be self-serviced?
2. Visual inspection of exterior
3. Visual inspection of interior
4. Weigh gas canister
5. Ensure firing pin is functioning
6. Check expiry on auto-inflate canister
7. Manually inflate with mouth piece
8. Document



Minimum Safety Equipment

Enclosed waters



Lifejacket

A buoyant jacket designed to keep a person afloat in the water. They must be carried for each person onboard small vessels, must be the correct size for the wearer and in good working condition. The Level of lifejacket required varies between enclosed and open waters. Make sure you have the correct Level of lifejacket for the area of operation, boat type or boating activity.



Anchor and chain/line

Must be the correct type and size of anchor for your vessel and the area of operation. Required on all vessels at all times, unless exempt.



Bailer/bucket/ fire bucket

A robust bucket, with lanyard attached, can be used for bailing water and fighting fires. Required on all vessels at all times, unless exempt.



Bilge pump

A manual or powered pump must be capable of draining each compartment of the vessel if the vessel has covered bilges.

Fire extinguisher

Vessels with an electric start motor, gas, fuel stove or battery must carry an appropriate fire extinguisher.

Sound signal

Vessels must have a means of providing a sound signal such as an air horn, whistle or bell, which can be used to signal other vessels.



Waterproof torch

A valuable safety device for signaling, for use as navigation lights on small vessels or for increased visibility. A waterproof torch must be operational and carried on all vessels at all times, unless exempt.



Safety label

Indicates the maximum number of people to be carried on a particular vessel and must be displayed on all powered vessels except PVC. Available for vessels under 6m, over 6m and those with flybridges.



Paddles/oars and rowlocks

Must be capable of rowing the vessel in which they are carried and are required on most vessels under six metres in length, unless the vessel has a second means of propulsion.

Open (ocean) waters

In addition to enclosed waters equipment

Compass

A navigational instrument which shows direction relative to magnetic North and is required by all vessels operating offshore. The compass must have a rotating card and be liquid damped.



V Sheet

A fluorescent orange-red coloured sheet (1.8m x 1.2m minimum) that can be spread over the deck or flown as a flag to indicate that you are in trouble. Is required to be carried by all vessels operating in open (ocean) waters.

Water

Two litres of fresh drinking water per person must be carried by all vessels operating in open (ocean) waters in case of an emergency.



Map/chart

A clearly legible (paper or electronic) chart/map of the area proposed for the vessel's voyage or excursion showing significant features for navigation such as shoals, reefs, hazards and channels is required on all vessels operating in open (ocean) waters.

Open (ocean) waters 2 nautical miles from shore

In addition to enclosed and open waters equipment

Marine radio

A communication device that allows contact with other vessels and shore stations for weather, navigation hazards and distress calls. Compulsory for all vessels operating more than two nautical miles from shore.



Emergency Position Indicating Radio Beacon (EPIRB)

A locating device that emits a 406MHz signal that can be detected by satellites and aircraft when you are in trouble. Compulsory for all vessels operating more than two nautical miles from shore, must be in date (according to the manufacturer's expiry date) and registered with AMSA.



Tenders (if operating in enclosed waters, less than 3m in length and operating within 200m of the shore)

Exempt from carrying other safety equipment if the vessel carries a paddle or oars, a waterproof torch if operating between sunset and sunrise, a bucket/bailer or bilge pump.

**BE BRIGHT
AT NIGHT**



Navigation Lights

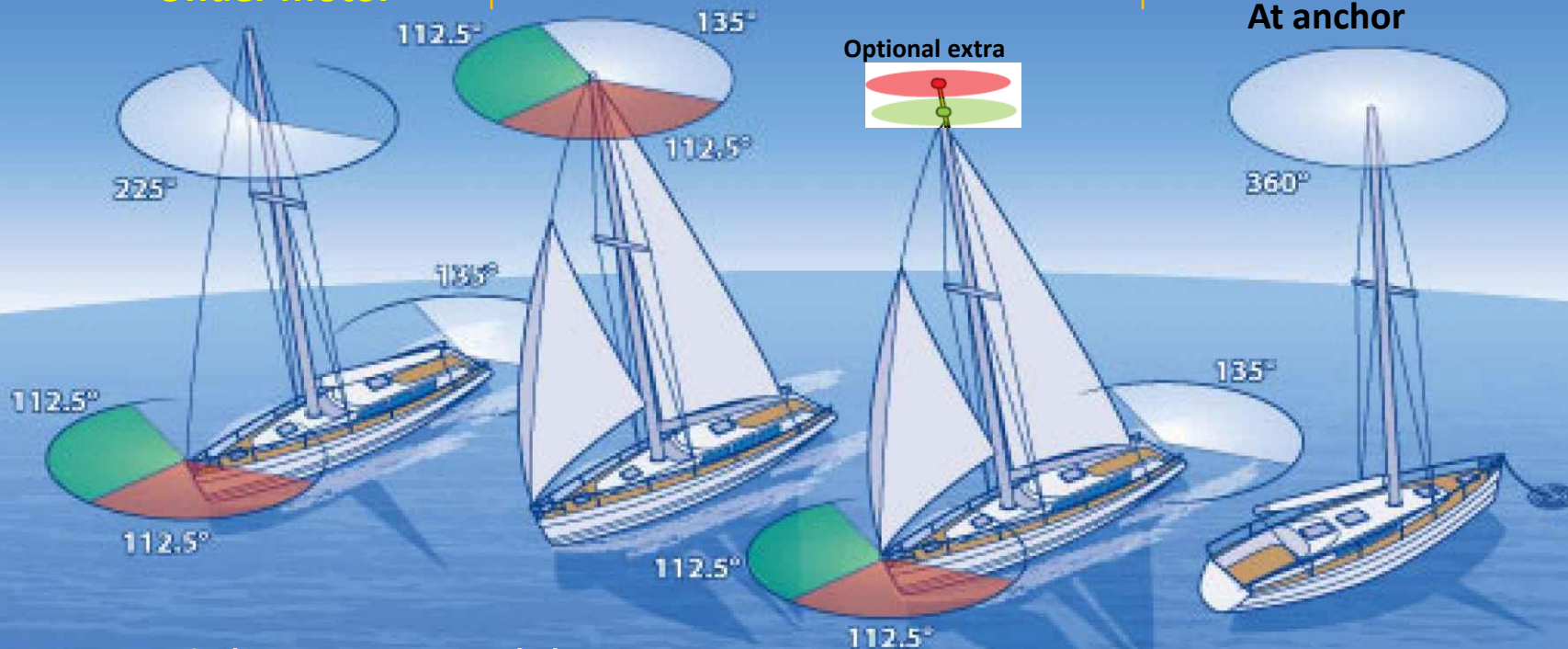
**BE BRIGHT
AT NIGHT**



Under sail

Under motor

At anchor



- Tricolour not recommended
- Not compliant for vessels under motor - steaming light must be a minimum of 1m above sidelights (COLREGS Annex 1 Rule 2 (d)(h))

Use a torch to illuminate sails in busy areas or when another vessel seen approaching



Rules & Regs

Sailing Events



Racing Rules

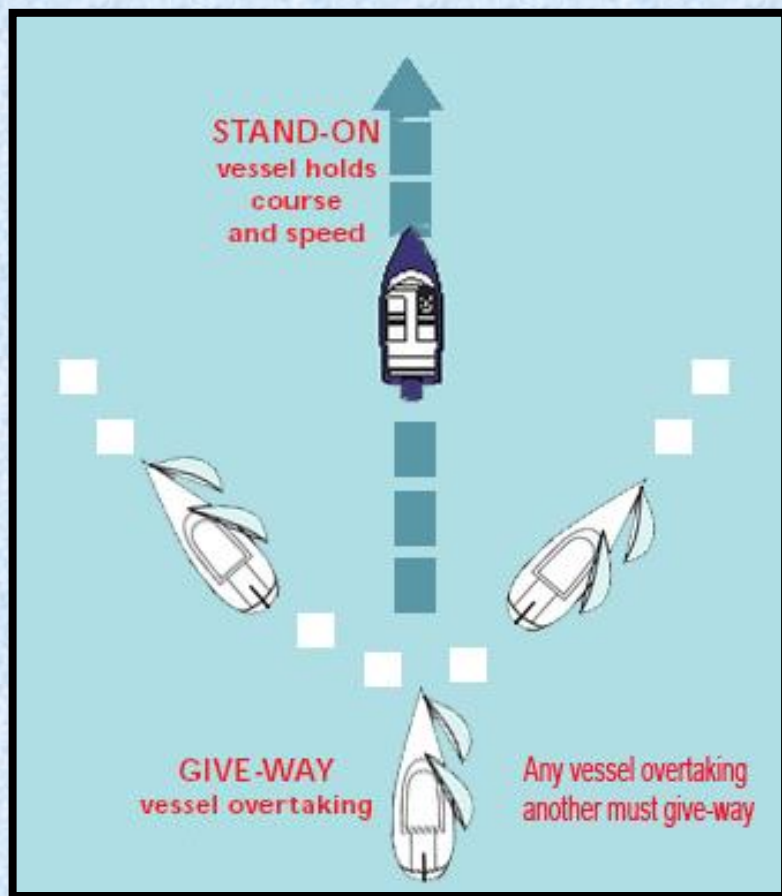
1. Interaction with other competing vessels:

- Australian Sailing Racing Rules of Sailing

2. Interaction with non competing vessels:

- International Regulations for the Prevention of Collisions at Sea 1972 (COLREGS).

COLREGS Rule 13 - Overtaking



(a)

Any vessel overtaking any other shall keep out of the way of the vessel being overtaken

(d)

Any subsequent alteration of the bearing between the two vessels shall not make the overtaking vessel a crossing vessel or relieve her of the duty of keeping clear of the overtaken vessel until she is finally past and clear.

COLREGS Rule 9 – Narrow Channels

(b)

A vessel of less than 20 metres in length or a sailing vessel shall not impede the passage of a vessel which can safely navigate only within a narrow channel or fairway.

i.e. KEEP CLEAR OF LARGE VESSELS!

COLREGS Rule 18: NSW Special Rule

Orange Diamond - Priority over sail signal

(2) The operator of a sailing vessel must keep out of the way of, and keep a safe distance from, a vessel displaying a priority over sail signal.



STEER CLEAR



of Big Ships and Ferries Event Condition

Before heading out check the Daily Vessel Movements on the Sydney Ports website: www.sydneyports.com.au

- ✓ Listen to the safety broadcast from Sydney Ports' 24/7 Vessel Traffic Service (VTS) centre on VHF Channel 13 for details of vessel movements
- ✓ Monitor VHF Channel 13 for position reports from vessels
- ✓ Always keep a lookout for seagoing ships and **STEER CLEAR** of them

- ✗ **DO NOT** pass between the escort vessel and the seagoing ship
- ✗ **DO NOT** pass within 30 metres of the side or stern of a seagoing ship
- ✗ **DO NOT** anchor in a channel or fairway
- ✗ **DO NOT** block a channel or fairway

24 HOUR HARBOUR OPERATIONS
VHF CHANNEL 13

Do not pass between escort vessel and seagoing ship



Escort vessel identified by Red and Blue Flashing lights.



1. Big ship

- Keep **500m** from bow,
- **30m** from sides & stern
- Do not pass between pilot vessel and ship

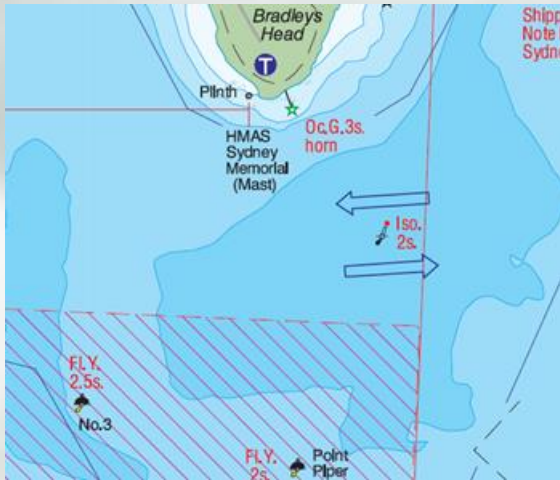
2. Ferries

- Keep **200m** from bow,
- **30m** from sides & stern

Responsibilities between vessels

If you are under motor (including motor sailing) you are a **power-driven vessel**

ADDITIONAL CONDITIONS: SAILING EVENTS



Safe Water Mark
Leave to Port



...or if that is not practicable participants must maintain a safe distance from other vessels.

ADDITIONAL CONDITIONS: SAILING EVENTS

Do not navigate between moorings whilst competing

Incident Reporting

All incidents

- Advise club Sailing Officer

Significant incidents

(i.e. incident has resulted in death or injury to a person resulting in admittance to hospital; significant damage to a vessel or other property; damage or risk to the environment)

- Advise RMS

Complete Vessel Incident Report Form

<http://www.rms.nsw.gov.au/maritime/safety-rules/incidents-emergencies/incident-reporting.html>

Go Easy on the Drink



The Permissible Concentration of Alcohol (PCA) on the water is the same as for the road:

Commercial Vessel Operator	under 0.02
Recreational Vessel Operators (under 18 years)	0.00
Recreational Vessel Operators (18 years and over)	under 0.05

Expired Flare Disposal



Check website for updates:

<http://www.rms.nsw.gov.au/maritime/safety-rules/safety-equipment/flare-disposal.html>

Any questions?

Thank you!

