



MHYC

MIDDLE HARBOUR YACHT CLUB

Seven Islands Race

Held in conjunction with the Jeanneau Cup Series
and the Sydney Short Ocean Racing Championship

28 November, 2020

(Updated 19 November 2020)

PURSUIT RACE SAILING INSTRUCTIONS

Organising Authority

Middle Harbour Yacht Club

75 Lower Parriwi Road, The Spit Mosman, NSW 2088

PO Box 106, Seaforth, NSW 2092

P: 02 9969 1244 E: sailing@mhyc.com.au W: www.mhyc.com.au

Seven Islands Race

28 November 2020

SAILING INSTRUCTIONS

1.0 RULES

- 1.1 The Organising Authority for the event is the Middle Harbour Yacht Club (MHYC).
- 1.2 The Race will be governed by;
 - a) the Racing Rules of Sailing (RRS),
 - b) the Special Regulations of Australian Sailing (AS),
 - d) the 2020-2021 Season MHYC Notice of Race (MHYC NOR) and by,
 - e) these Sailing Instructions (SI).
- 1.2 The attention of competitors is drawn to the MHYC NOR which are referenced throughout these SIs including their responsibilities under the applicable NSW Maritime legislation.
- 1.3 A boat shall comply with the Special Regulations Part 1 for Category 7. An audited Special Regulations Form for the relevant Category (or Cat's 1-6)) shall be submitted with the entry if not already held by MHYC.
- 1.4 The Sailing Office of MHYC shall be the Race Committee ("RC") for the purposes of, and with, the powers and discretions contained in RRS 90.1. This amends MHYC NOR 4.2.
- 1.5 Pennants may be provided by the event sponsors. If provided, pennants shall be flown from the backstay at all times whilst racing. Boats failing to comply with this may be protested by the Race Committee only. This alters RRS 60.1 and 60.3.

2 NOTICES TO COMPETITORS

- 2.1 Notices to Competitors will be posted on the Official Notice Board which is located in the Breezeway of the Clubhouse.

3 CHANGES TO THE SAILING INSTRUCTIONS

- 3.1 Any change to the Sailing Instructions will be posted before 0830hrs on the day it will take effect except that any change to the schedule of races will be posted prior to 1800hrs on the day before it will take effect.

4 THE SEVEN ISLANDS/JEANNEAU CUP RACE

- 4.1 The Seven Islands/Jeanneau Cup race shall be a Handicap Pursuit Race per MHYC NOR 22 with a Count Up start sequence.
- 4.2 Start numbers will be based on time correction factors (TCFs). A boat's TCF shall be determined by the RC or its nominee.
- 4.3 Boats shall notify the MHYC Sailing Office not later than 2 days prior to a race of any change, addition or alteration to a boat's hull appendages, equipment, sail inventory or skipper/crew that may affect its performance. At the discretion of the RC, a boat that fails to comply may be either disqualified after a hearing or have its results retrospectively adjusted by applying a new TCF based on the effect on the boat's performance.
- 4.4 The TCF, and a boat's start number based on it, shall not be subject to protest or constitute grounds for redress (amends RRS 60.1 and 62).
- 4.5 When only one boat starts and sails the course within the time limit, the RC shall not abandon the race (amends RRS 32).

5.0 DIVISIONS

- 5.1 Divisions may be formed or abandoned at the discretion of the Sailing Manager or their nominee.
- 5.2 Two-Handed and Non-Spinnaker entries may be included in any division.
- 5.3 For boats entered as non-spinnaker, only a mainsail and headsails as defined in RRS 50.4 shall be used. Headsails shall not be set flying. (No sail shall be set forward of a point of attachment of the permanent forestay).
- 5.4 Class Flags shall be:
 - Division 1 Code Flag D
 - Division 2 Code Flag E
 - Division 3 Code Flag F

6 SIGNALS

- 6.1 Signals will be displayed from the MHYC Starters Box, located at the North Eastern corner of the Club premises.
- 6.2 Signals will be as follows:
 - 1050 Hrs Course Number Displayed
 - 1100 Hrs Start, Count-up sequence commences
- 6.3 The display of the course number and the start of the count-up sequence may each be accompanied by a sound signal.

7 THE START

- 7.1 The Start Line shall be as MHYC NOR 16.1, Club House Start Line.
- 7.2 The RC will allocate a starting number in minutes to a boat for each race. A boat shall not start before the Starter's Board has displayed its designated start number.
- 7.3 Numbers will be displayed via a count-up clock on the MHYC Race Officials Box or displayed manually.
- 7.4 There will be no recalls. Any yacht deemed to have started prematurely and that has not returned and started correctly shall be penalised 5 minutes plus the difference between her starting number, applied to her finish time. This amends RRS 29.

8 THE COURSE

- 8.1 The Courses for Seven Islands Race on Saturday 23rd November are described in Appendix A.
- 8.2 Attention of competitors is drawn to the MHYC NOR and those areas which are designated obstructions and prohibited areas in the vicinity of the Gowlland Bombora, the Sow and Pigs Reef, Circular Quay, Garden Island and Shark Island. A boat shall not sail into an area designated a prohibited area.
- 8.3 All competitors are requested to remain to the starboard side of shipping channels where practicable. When it is a mark of the course, competitors shall leave the Safe Water Mark (KFC Mark) at Bradley's Head to Port.
- 8.4 Courses may be shortened for one or more divisions at any mark in accordance with RRS 32.

9 THE FINISH

- 9.1 The Finish Line for the will be the Clubhouse Finish Line as per MHYC NOR 17.

10 TIME LIMITS

- 10.1 The time limit will be 1630hrs. If the leading yacht finishes within the time limit, then finishes for other yachts will be timed until 1730hrs.
- 10.2 A boat that does not finish within the time limit shall be scored DNF. This amends RRS 35.

11 ALTERNATIVE PENALTIES

- 11.1 For an infringement of RRS Part 2, the Two-Turns Penalty (RRS 44.2) shall apply.
- 11.2 For an infringement of any other rule or requirement, the Scoring Penalties of RRS 44.3 shall apply. The penalty shall be computed as a percentage of the number of entries in the relevant division.

12 ABANDONED RACES

Abandoned races will not be re-sailed.

13 PROTESTS

Protests shall comply with MHYC NOR 24.

14 RADIO COMMUNICATION

- 14.1 Except in an emergency, while racing a boat shall neither make radio transmissions nor receive radio transmissions not available to all boats. This restriction also applies to mobile telephones.
- 14.2 Yachts shall maintain a listening watch on VHF Channel 72 for the duration of the race.
- 14.3 Competitors retiring from the race shall advise the RC on Channel 72 or the Sailing Office by phone 8969 3103 as soon as practicable.

15 PRIZES

Prizes shall be presented at a post-race presentation.

16 RESPONSIBILITY

- 16.1 Competitors participate in the MHYC Feature Race Program at their own risk. Special attention is drawn to RRS Fundamental Rule 4, which states: "The responsibility for a boat's decision to participate in a race or to continue racing is hers alone".
- 16.2 The Organising Authority, Event Sponsors, and their respective officers, employees, volunteers and members accept no liability for any injury, loss or damage that may be suffered by any competitor, and any liability for harm to persons that results from breach of an express or implied warranty that the MHYC Feature Race Program and all services relating thereto will be conducted or rendered with reasonable care and skill is excluded.
- 16.3 Neither MHYC, nor the event sponsors, are responsible for the seaworthiness of a boat whose entry is accepted or the sufficiency or adequacy of its equipment.

17 COVIDSafe Sailing

Competitors should note:

- Crew Registration is required for this event – [click here](#)
- COVIDSafe Sailing Information for Competitors - [click here](#)

APPENDIX A – COURSES

COURSE 1 – Seven Islands Race (Approx. 22nm / 19nm)

Start	MHYC
1	(X) AS Mark Manly West (S)
2	(X) AS Mark Manly East (S)
3	AS Mark Shark Island (S)
4	Shark Island (S)
5	Fort Denison (P)
6	Goat Island (P)
7	Cockatoo Island (P)
8	Spectacle Island (P)
9	Snapper Island (P)
10	Goat Island (S)
11	Fort Denison (P)
12	Clarke Island (P)
13	Bradley's Head Safe Water Mark (P)
Finish	MHYC

COURSE 2 – Five Islands Race (Approx. 21nm / 18nm)

Start	MHYC
1	(X) AS Mark Manly West (S)
2	(X) AS Mark Manly East (S)
3	AS Mark Shark Island (S)
4	Shark Island (S)
5	Fort Denison (P)
6	Goat Island (P)
7	Cockatoo Island (P)
8	Goat Island (S)
9	Fort Denison (P)
10	Clarke Island (P)
11	Bradley's Head Safe Water Mark (P)
Finish	MHYC

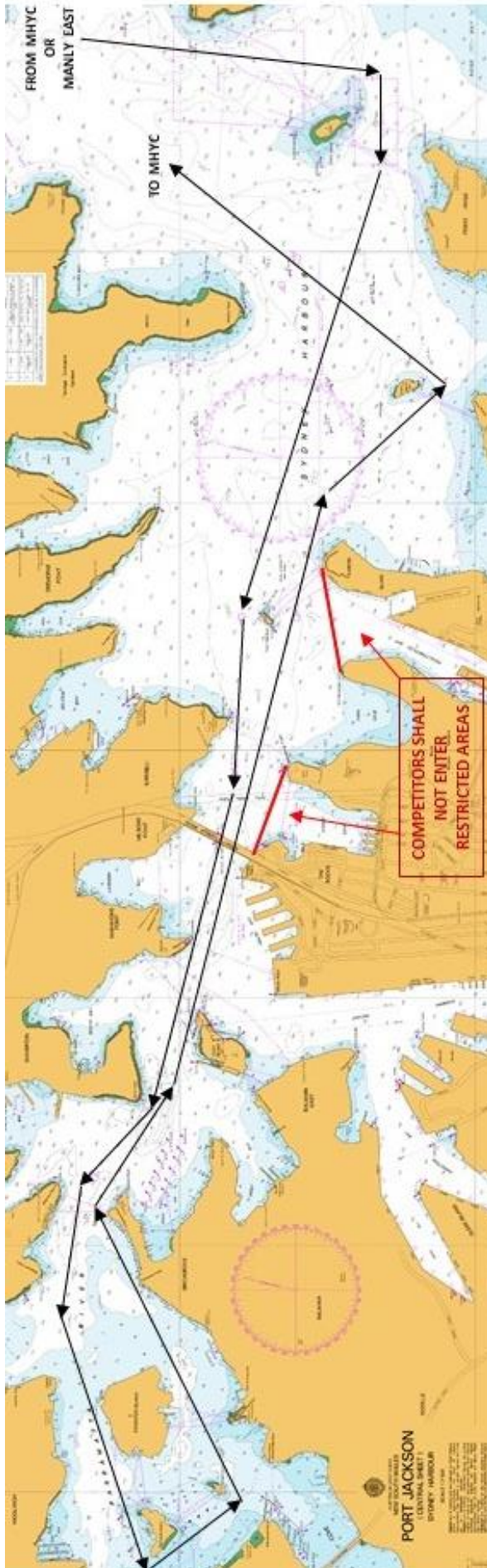
COURSE 3 – Three Islands Race (Approx. 15nm / 12nm)

Start	MHYC
1	(X) AS Mark Manly West (S)
2	(X) AS Mark Manly East (S)
3	AS Mark Shark Island (S)
4	Shark Island (S)
5	Fort Denison (P)
6	Clarke Island (P)
7	Bradley's Head Safe Water Mark (P)
Finish	MHYC

NOTES

1. Division 2 & 3 yachts shall omit each mark prefixed (X)
2. All Islands are Marks of the Course and shall be rounded (or passed) to port (P) unless a starboard rounding is indicated by the suffix (S).
3. In accordance with RMS requirements, Fort Denison shall be left to **port** on all legs of the course.
4. Competitors shall observe all navigation restrictions applicable to Circular Quay and Garden Island.
5. A guide to the course, for illustrative purposes only, is attached to these Sailing Instructions at Appendix B.

APPENDIX B - CHARTLET



1. Competitors shall leave Fort Denison to PORT for all legs.
2. All Islands are Marks of the Course
3. Competitors shall observe all navigation restrictions applicable to Circular Quay and Garden Island.
4. So far as is practicable, competitors shall remain to the STARBOARD side of the channel throughout the race and leave the Safe Water Mark at Bradley's Head to Port.