



MIDDLE HARBOUR YACHT CLUB

THE COMPASS ROSE CRUISING LOG

VOLUME No. 33, No. 04 May 2013

Registered by Australia Post
Publication No.: NBH 6131

Editor: Maralyn Miller

**Next Meeting: Monday May 20th, 7:30 p.m.
B.Y.O. BBQ 6:30 p.m.**

**Guest Speaker: Dion Hart
Preparing your Rig for Cruising**



Jabiru alongside at Elandra (Mystery Weekend)

CRUISING DIVISION OFFICE BEARERS – 2013

<i>Cruising Captain</i>	Colin Pitstock	0407-669-322
Cruising Vice Captain	Phil Darling	0411-882-760
Vice-Commodore Cruising	Colin Pitstock	0407-669-322
Secretary	Glynne Attersall	0417 028 931
Treasurer	Trevor D'Alton	9960-2878
Membership	Jean Parker / Michael Mulholland-Licht	0403-007-675
Name Tags	Lena D'Alton	9960-2878
Compass Rose Coordinator	Maralyn Miller	0411-156-009
Safety Coordinator	Bill Allen	9977- 0392
Waterways User Group	Mike McEvoy	9968-1777
Sailing Committee	Colin Pitstock	0407-669-322
Guest Speakers	Royce Englehardt, & Committee & Members as required	
On Water Events Coordinator	Colin Pitstock/ Michael Mulholland-Licht/ Phil Darling / Glynne Attersall	Michael 0418-476-216 Phil 0411-882-760
On Land Events Coordinators	Jean Parker / Hilary Gallagher / Scott Saunders/ Charo Devery	
General Committee assistance	Royce Englehardt, Scott Saunders, Trevor D'Alton, Phil Darling, Maralyn Miller, Hilary Gallagher	



Editor's note:

Deadline for the next edition of the Compass Rose, is: **6th June 2013**

The EDITOR for the next Compass Rose is **Maralyn Miller**. Please forward contributions c/-:

MHYC PO Box 106
SEAFORTH NSW 2092,

or
email:

Darling.maralyn@ozemail.com.au

Opinions expressed in the Compass Rose are those of the contributors, and do not necessarily reflect opinions of either Middle Harbour Yacht Club or the Cruising Division

MHYC Cruising Division Program 2013 – 14

May '13	Sat 4 th – Sun 5 th	Mystery Cruise – On water / On land
	Mon 20 th	CD Meeting – 7:30pm at the club (BBQ 6:30pm)
June	8 th - 10 th LWE	Get Checked Weekend and Raft-up at Sugarloaf.
	Mon 17 th	CD AGM – 7:30pm at the club (BBQ 6:30pm)
July	Sat 13 th	Long Lunch
	Mon 15 th	CD Meeting – 7:30pm at the club (BBQ 6:30pm)
August	10 th - 11 th	On Land Event
	Mon 19 th	CD Meeting – 7:30pm at the club (BBQ 6:30pm)
September	14 th - 15 th	Blackwattle Bay raft-up and Fish Market Cooking School.
	Mon 16 th	CD Meeting – 7:30pm at the club (BBQ 6:30pm)
October	5 th - 7 th - LWE	Port Hacking Mini Cruise .
	Mon 21 st	CD Meeting – 7:30pm at the club (BBQ 6:30pm)
November	Sun 10 th	On Land Event
	Mon 18 th	CD Meeting – 7:30pm at the club (BBQ 6:30pm)
December	Sun 8 th	Christmas Long lunch @ MHYC
	Mon 16 th	CD Meeting – 7:30pm at the club (BBQ 6:30pm)
January	Mon 20 th	End of Cruise BBQ. Informal Meeting.
February	Mon 17 th	CD Meeting – 7:30pm at the club (BBQ 6:30pm)
	28 th - 1 st	Course 045° and raft-up in Pittwater.
March	22 nd - 23 rd	Echo Point Raft-up and Safety Practice Weekend.
	Mon 17 th	CD Meeting – 7:30pm at the club (BBQ 6:30pm)

Next Meeting: Monday May 20th, 7:30 p.m.

B.Y.O. BBQ 6:30 p.m.

Guest Speaker: Dion Hart

Preparing your Rig for Cruising

Captain's Column – May 2013

Hello Sailors,

Another month has gone past, & another on water Event, the Mystery Weekend. For those of you that didn't make it, we all had a fabulous time. We are certainly very lucky to be living in Elvina Bay. It was great to have you all there for the Mystery weekend, plus we all got to hear Scott on the piano & sing. Scott & I would like to thank you all for coming.



We have also put our new Calendar together for 2013 to 2014, which will be in the new MHYC handbook, so can you all please put in your diaries next year's events, there is a mixture of things to do, more on water events which include; a boat trip to the Fish Markets for a cooking school, a progressive dinner safety events, putting up our storm sails & racing 100m. It would be great to see all of you at our events, as we need to have as many of you to come along to keep the Cruising Division alive & kicking.

The AGM is coming up for the Cruising Division. We would love to see some new faces taking up some of the roles. To start with we need a new Secretary as Glynne will be stepping down after providing such a great service. Also if anyone would like to be Cruising Captain, I would be happy to stand aside. I look forward to seeing you all at the AGM.

Tuppenny Girls are now on the Gold Coast, heading to the Ambon Rally starting point in Darwin Harbour. They need to be in Darwin 1/7/13, so they will not have much time to rest.

Trevor & Lina are up at Lake Macquarie. Shazam is still up exploring Pittwater. Simply Irresistible is up in Pittwater & has just had a trip to the The Lake as well. Bliss has just come back from Pittwater. It's great to hear so many of you out there doing what you enjoy. So if any of you are planning a cruise let us know so we can put it in the Compass Rose. Next year we have put Port Stephens Regatta, as a cruising Event, this will be great to turn this into our cruising event for the year, also a heap of fun. For you that are planning on going further you can use this Regatta as stepping stone to heading North. We have also had the Annual Club Presentation Night, and a congratulations to Greg & Deb Cockle on Volare for the recent circumnavigation, of Tasmania. Also John Eastway for winning the Drouge on Flemingo for being the first to be at a cruising destination.

We have Dion Hart coming in May, to talk to us about preparing the your rig for a cruise. Plus the June Long Weekend cruise is also coming up. So see you out there, look forward to seeing you at our next club event.

Smooth seas & Gentle Breezes

Colin

Colin Pitstock, Cruising Captain and Vice-Commodore, Cruising.

FUTURE EVENTS:

JUNE LONG WEEK-END Sat 8th – Mon 10th June

Special Regulation Audits are compulsory for all yachts racing with MHYC (refer to Special Regulation 21.1 in the 2012-13 Sailing Handbook) and forms part of a yacht's compliance requirement to enter a MHYC event or any other Yacht Club event. Most of us in the Cruising Division will require a Cat 4 safety Certificate (unless you are only intending to take part in Harbour events in which case Cat 7 is required). Annual YA and MHYC Special Regulation Audits will be conducted on the 15th and 16th of June at the Club. However, this is the chance to beat the rush and either:

- a) Have a "pre-check" of your boat's safety gear by an accredited YA Auditor before the real thing, OR
- b) Jump straight in and have the actual audit completed during the course of the Sugarloaf Weekend

Please note if you don't take the opportunity to have your boat safety checked on this weekend or the following weekend at the Club, you will need to make arrangements for an audit by one of the accredited officers and this will cost \$30 for Cat 7 and \$50 for Cat 4.

The Sugarloaf Weekend allows Members to have their yachts audited, PFDs, first aid kits and fire extinguishers inspected, and if you choose option (b) have your certificate issued for 2013-14 season. If you decide on option (a) your friendly safety auditor will advise what's necessary to do before submitting your boat to inspection on the following weekend at the Club.

Make sure you get a copy of the MHYC Sailing Handbook 2012 – 2013 and the Racing Rules of Sailing 2013 – 2014 (the "Blue Book"). Both are required to pass the safety audit and remember the need to check and update PFD's

We will have auditors available for the weekend and to respect their time commitments suggest that the raft-up commences in Sugarloaf from about 10:00AM on Saturday June 8th. Coordinating boat at this stage will be advised on arrival. As per normal procedures, after making contact on VHF 16, VHF 77 will be used as the working channel.

It's important that all boats intending to take part in this weekend contact the Coordinator prior to the weekend so that a schedule of inspections can be drawn up. More details will be provided at the May monthly meeting.

BUY, SWAP AND SELL

For Sale, one gas and one solid fuel stainless steel circular Magna boat BBQs. Good condition. Offers
0417 028 931 Glynne

For Sale: Sails - from my Bavaria 42 "Union"

2 x 3DL mainsails [with frp battens]
3 x non-overlapping jibs, light, medium & heavy
1 x carbon mainsail
1 x 150% Kevlar/mylar genoa
5 x zip up life jackets

To be sold individually or one lot. View at Hood Sailmakers - 19 West St Brookvale
\$3300 the lot or make an offer.

Contact: Bruce Ritchie on 0419 436 151 Or 9948 1026

PAST EVENTS

Mystery Cruise 4-5 May 2013 by Mike McEvoy

The destination was no mystery but the weather was. Our destination was the home of Colin and Scott in Elvina Bay, Pittwater. Given the weather forecast southerly from noon we on JABIRU decided an early start to beat the breeze was in order. Sue and I were the crew and JABIRU was ready for the event. We rounded North Head at 09:00 and headed out at 11.5 Knots. Shortly after passing Fisher Point we saw a familiar vessel and detoured slightly to greet Michael on BLISS who was single handed sailing BLISS back from Lovett Bay, Pittwater where she had been anti-fouled. We were able to get close enough to exchange greetings then each headed off in opposite directions.

The ride up to Barrenjoey was reasonably smooth and the only incident was the port engine temperature alarm sounded, so I shut down the engine for a while. The starboard engine was fine but I reduced the revs somewhat to take the strain off the running gear. JABIRU was still able to do 6.5 knots on one engine. The only noticeable effect was the need for more rudder to keep on course. We did the run Head to Head in 2 hours.

We certainly beat the southerly up the coast but the speed restrictions coming down the Pittwater slowed us down for the final run to Elvina Bay. Upon arrival at our destination I tried calling Colin but was switched to voicemail. Instead I sent a text message saying that we had arrived and were tying up to the pontoon on the wharf at their place. It seems that Colin was doing the house work and the vacuum cleaner stopped him from hearing the call. A short time later he texted and I went up to say G'day and get the lay of the land. Then back to the boat for lunch to find that the gas ran out just as the pies were getting warm. Just as well we were not relying on the gas for our evening meal.



We spent the afternoon reading the newspaper and assisting Colin with various jobs in preparation for the evening. Later in the day Colin kept running "The Pitts" speedboat back and forth with the various Mystery Tourers who arrived by road. The only other Cruising Division Vessel to arrive was eXpresso with Phil and two others on boat, Maralyn having arrived with the D'Altons. All up there were 16

there for the BBQ, brilliantly cooked by Colin who, during the afternoon, had prepared roast vegetables, smashed potatoes and a lovely pavlova. There was no shortage of drinks and the trip back down to the boat required some agility.

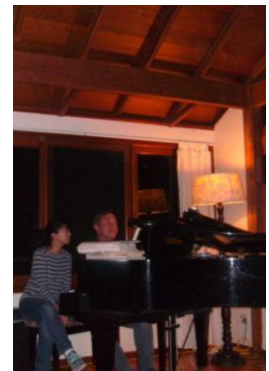


We awoke early and when we reviewed the options, weatherwise, we decided to head immediately for Port Jackson. JABIRU rounded Barrenjoey at 08:00 into very confused seas with a SW breeze. Thank goodness for the windscreen wipers to be able to see the fishing buoys on the way down the coast. This time we did the run in 1 hour and 40 minutes, maybe JABIRU runs faster downhill.

Once back in the harbour we headed to Clontarf Marina to refuel, where we scored a 5% discount for purchasing more than \$750 of diesel i.e. \$34.00 an hour for fuel or 20 litres an hour, makes your day doesn't it. So we also refilled the water tank and washed the salt off the boat. The salt spray had literally covered the boat up to half way up the flybridge so you can get some idea of the spray coming off the bows.

Our thanks go to Colin and Scott for a wonderful night. Scott was even persuaded to play the piano and sing for the group; wonderful. Your new home is a great retreat from work and city life.

Mystery Tourers, don't forget to advise PW of your attendance for the Point Score, that includes SHAZAM, even though they weren't on board, Scott had to travel from work at MHYC to attend the event.



CRUISING NEWS: Andy Brenan and the adventures of Jenzminc

We left Langkawi on the 9/2. We pulled into Pulau Raya.

We left Penang on the 12/2, left Pulau Rimaru on the 13/2. We pulled into Pankor on 13/2.

We left Pankor on the 16/2 and arrived At Pt Klang on the 17/2.

We left Pt Klang on the 19/2 and pulled into Pt Dickson.

We got in to Melaka on the 20/2. I had done 17005 nautical miles to here. We got into the Republic of Singapore Yacht Club on the 22/2.



We got out of Singapore on the 1/3 and got into Kuching on the 4/3. We lost Bob & Jill on this trip. They are in Gove at the moment and will be back to pick up the boat in Nov.



Kuching

We left Kuching on the 7/3 and pulled into Bintulu on the 9/3. We pulled out of Bintulu 10/3 and got to Miri on the 12/3

We have left Miri on the 14/3 and got to Kuala Belait. we left Kuala Belait and got to Labuan on the 17/3

We left Labuan on the 19/3 to go to Pulau Tiga, and KK on the 20/3

We left KK on 30/3, Pulau Pandan, which was a wonderful bay, and Kudat on 31/3



Kota 6 April 2013



We got away from Kudat on the 9/4 to Balabac Is. We got out of there we have gone to Ipoliote Bay. We got out of there on the 11/4 to go to Rax Is and the on to Tando, and then Puerto Princesa on the 12/4.

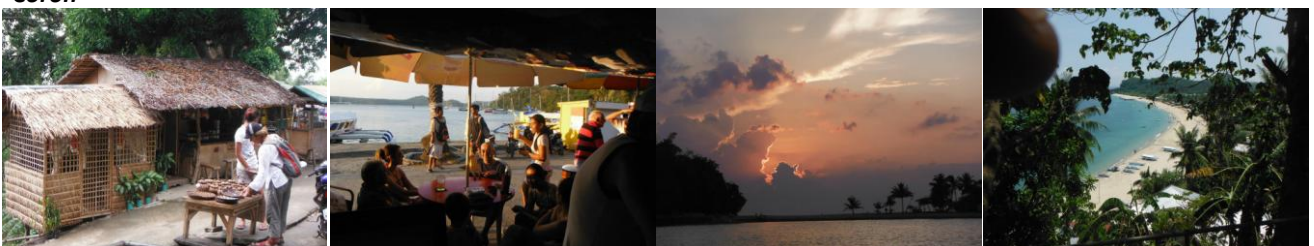


Coron

We left Puerto Princesa on the 17/4 and went to Tinitian, then onto Dumaran Is on the 18/4, Nangalao Is on the 19/4 and Coron on the 20/4.

We left Coron on the 23/4, Apo Reef on the 24/3, Bagalayag Pt on the 25/4 and Puerta Galea on the 26/4.

This is as high as we are going and we go SE to Pulau Is, Kavieng on New Ireland, Rabaul, Solomons, Vanuatu, Noumea and home.



Galera 26 April 2013

USE YELLOW CELLS ONLY		CRUISING DIVISION PARTICIPATION POINTSCORE CALCULATION SHEET															
		JAN - DEC 2013										Compass	Attendance	Technical	TOTAL		
DATE =		23-24 Feb	29-Mar	25-28 Apr	4-5 May	8-10 June	17-18 Aug										
EVENT =		1st	2nd	3rd	4th	5th	6th	7th	8th	9th	10th	Rose	at	Corner			
ENTER CREW FOR EACH		Crew Ave Raft Nights	Watchman & Nightsup	Easter Cruise	Anzac Long W.E	Mystery Cruise	Long W/E cruise	Safety Nightsup	TBA	TBA	TBA	TBA	Feature Articles Points	Monthly Meeting Points	Projects compl't'd	CUMUL' SEASON POINTS	
YACHT		No. Nights	1	3	3	1	2	1	1	1	1	1	1	1	3		
Altair	Crew		Storms	None	None	Elvina							0	2	0	2	
Kieth Watson	Nights																
Ballymagirl	Crew												0	1	0	1	
Noel & Jean	Nights																
Bliss	Crew												0	2	3	5	
Michael & Astrid	Nights																
Breeze	Crew												0	1	0	1	
Bill & Helen	Nights																
eXpresso	Crew												0	1	0	1	
Phil & Maralyn	Nights																
Flemingo	Crew												0	1	0	1	
John Eastway	Nights																
Galan	Crew												2	0	0	2	
Mike & Hilary	Nights																
Highland Ghost	Crew												0	1	0	0	
Tig & Mavis	Nights																
Jabiru	Crew												0	2	6	8	
Mike & Suzanne	Nights																
Jenzminc	Crew												0	0	0	0	
Andy & Jen	Nights																
Kachina	Crew												0	2	3	5	
Trevor/Leena	Nights																
Mateship	Crew												2	2	0	4	
Wolf & Tricia	Nights																
Mereki	Crew												0	0	0	0	
Richard	Nights																
Moet	Crew												0	0	0	0	
Simone & Bob	Nights																
Rapture	Crew												2	2	0	4	
Paul & Anne	Nights																
Simply Irrestible	Crew												2	2	3	7	
Glynnne & Gill	Nights																
Shazam	Crew												4	2	3	9	
Colin & Scott	Nights																
Providence	Crew												0	0	0	0	
Byrce	Nights																
Truant 5	Crew												0	0	0	0	
Tony	Nights																
Volare	Crew												2	0	0	2	
Greg & Debbie	Nights																
Viva	Crew												0	1	0	1	
Tont Bates	Nights																
Leeway	Crew												2	0	0	2	
Lee Laurie	Nights																
	Crew												0	0	0	0	
	Nights																
	Crew												0	0	0	0	
	Nights																
No. of Boats =		0	0	0	0	0	0	0	0	0	0	0				Points 9	
Boat = 1 Point per Night												Compass Rose Articles = 2 points per feature					
Crew = 1 Point per Night per Person.												Representation at Meetings = 1 point per month					
Skippers are deemed to sleep on their own boat.												Technical Projects implemented = 3 points each					
Crew are averaged, if not present for all nights of the event												First 3 Bottles of Wine					
												Second 2 Bottles of Wine					
												Third 1 Bottles of Wine					
Skippers are required to email <paul_wotherspoon@bigpond.com>with results to receive points																	

The Leading Boat is.... **Shazam**

The Quiz – May '13

- Two sailing vessels crossing one another on a collision course, with wind on different sides, the "give-way" vessel is the one which has:
 - The other on her starboard side;*
 - The wind behind the beam;*
 - The wind on starboard side;*
 - The wind on port side.*
- When two vessels are approaching one another on a crossing course, they are required to determine if there is a risk of collision, by checking each other's:
 - Speed;*
 - Course;*
 - Bearings;*
 - Course.*
- You are sailing on a course of 090 degrees. You see a ship bearing 045 degrees on an apparent collision course:
 - She must keep out of the way;*
 - You must keep out of the way;*
 - There is no give way vessel in such a situation;*
 - Both vessels are give way vessels.*
- A vessel must show her navigation lights when under way:
 - From sunset to sunrise and in poor visibility;*
 - At all hours;*
 - From sunset to sunrise;*
 - Only when motoring.*
- The difference in the anchor signals of a sailing vessel and a power-driven vessel is:
 - The positioning of the signal;*
 - Sailing vessels do not show an anchor ball;*
 - Power-driven vessels show two anchor balls;*
 - None.*
- Which of the following describes an international distress signal:
 - A signal transmitted by an EPIRB*
 - An orange sheet showing a black "V"*
 - A hand flare showing a white light*
 - A gun fired every five minutes*
- Two trawlers in close proximity lighting the area between them with floodlights are:
 - Indicating the safe side to pass;*
 - Pair trawling;*
 - Attracting the catch;*
 - Shooting nets.*
- A distress signal must not be used without the authority of:
 - The master;*
 - Master or owner;*
 - Owner;*
 - A person with a radio operator's certificate.*
- The risk of a vessel broaching in rough seas is minimal when:
 - Running before the sea;*
 - Surfing;*
 - Pitching in synchronism;*
 - Riding on the back of a wave.*
- A vessel's quarter is the:
 - Bow;*
 - Quarter of any part of the hull;*
 - Stern;*
 - Quarter between stern and beam.*

VALE Bruce Stevens ...



Sadly Bruce Stevens passed away peacefully aged 62, on Saturday 20th April 2013 in hospital surrounded by family and friends.

A past member of MHYC, he was an enthusiastic participator in Cruising Division events, tirelessly and selflessly performing high speed water taxi duties for others in his beloved (and over powered) half cabin runabout "I'll Second That".

A Caribbean Crestcutter 17.5 ft overall on a double axle trailer, Bruce lovingly rebuilt her, exchanging the original 140 hp outboard for a Johnson V6 race motor detuned to 235 horsepower. There was always a wicked smile when he touched the throttle.

"Hang on tight while I point the ponies at the prop !"

Well known and loved for his infectious humor and incessant laughter, he will be sadly missed.

FAREWELL BRUCE ...

*Dear God above, I've a favour to ask.
Please hear my prayer, it's a simple task.
A sailor has passed from this troubled earth,
In need of a home, and a sheltered berth.*

*Give him full marks, for the others he helped.
Give him full marks, for the love that he felt.
Remember the times, he helped others to cope,
Fixing things up, and restoring their hope.*

*Ask him a favour, he'd never say no.
Generous with time, like none that I know.
Sander now silent, heat gun now cold,
Resins lie dormant, no wax in the mould.*

*Lord lead him home, with your guiding light.
And use your Love to set all things right.
His passage well sailed, his race is well run.
Now let him rest easy, his voyage well done.*

... Rapture

Chef's Cornerwith Colin Pitstock

Hello Sailors

Well the heaters are on the nights are chilli& the Reds have come out of the cellars, I'm sitting here having a Tempus Two Cabernet Merlot 2011 very nice. So I thought you should like a couple of winter warmer recipes.



Jabiru Slow Cooked Lamb Shoulder

So get the Red out of the cellar, fill up your glass, & bring your bottle to the galley. This is very simple.

Serves 4

Ingredients

- 1kg lamb shoulder, on the bone
- 1½ cups (310ml) balsamic vinegar
- 3 cups (750ml) chicken stock
- 6 sprigs rosemary
- 8 cloves garlic
- 2 tablespoons brown sugar



Method

Preheat oven to 140°C (275°F). Place the lamb, vinegar, stock, rosemary, garlic and sugar in a deep baking dish and cover with a tight-fitting lid. Bake for 3 hours. Turn the lamb and bake for a further 2 hours. Remove the lid, increase temperature to 180°C (350°F) and bake for 30 minutes or until the lamb has browned. Remove lamb from the pan and keep warm. Pour the pan juices over a large bowl of ice and quickly remove the ice and the solidified fat with a slotted spoon. Place the pan juices into a small saucepan and bring to the boil. Serve the lamb with crispy roasted potatoes, steamed greens and the pan juices.

This was a hit at the mystery weekend dinner, another easy one. So grab your glass, top it up & get started.

Ballymagirl Brown Sugar Pavlova

I like my meringues to be old-fashioned and gooey in the middle, rather than bright white and explosive. The vinegar and arrowroot give this a chewy centre, and I add soft brown sugar for its caramel flavouring and gorgeous golden colour. Pavlova is traditionally a summery dessert, but



this one, with its warmer colouring, also works beautifully in winter with torn figs instead of strawberries.

Serves 8 to 10

Ingredients

- 6 egg whites
- 1/4 teaspoon cream of tartar
- 1 teaspoon vanilla extract
- 225g (1 cup) caster sugar
- 80g (1/3 cup) soft brown sugar
- 1 tablespoon cornflour
- 2 tablespoons arrowroot
- 2 teaspoons white vinegar

to serve

- 300ml (1 1/4 cups) cream
- 150g Greek yoghurt
- 500g straw berries, hulled and halved
- 1–2 tablespoons honey

Smooth seas make it easier to cook - Colin SY Shazam (*Thanks to Donna Hay as always*)

PHOTO CORNER

.....hints from **Wolfgang Kullik**

Sensors (Revisited).

Photography is about OPTICS and quality electronic SENSORS. That means good lenses made from flawless glass, shaped and polished to perfection. The electronic sensor has to be of good quality with lots of individual PIXELS to capture the image. The pixels need to have enough separation not to interfere with each other. This means that size matters. The industry has miniaturized these components along with all other electronics. Thus even the cheap digital cameras have over 10 million pixels. However, the larger sensors allow even larger pixel counts in the 20 million range.

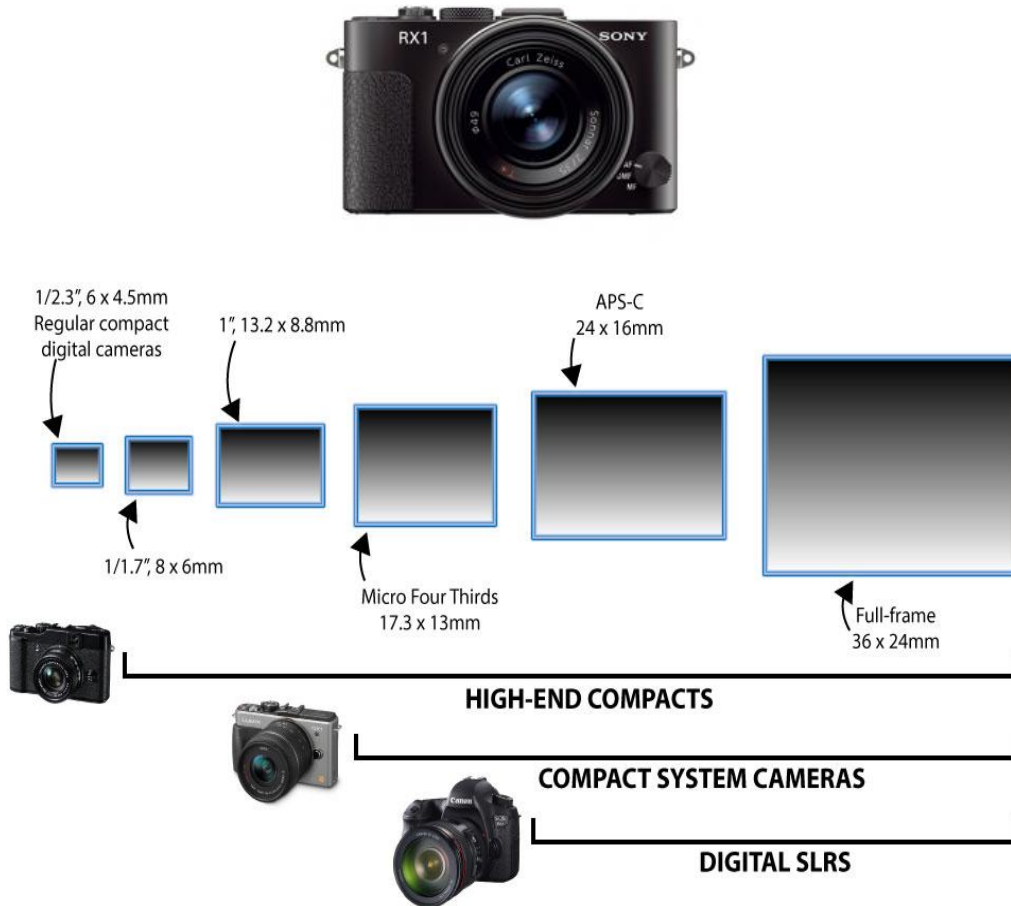


The diagram shows the comparative Sensor sizes for various digital camera systems. As you can see, the cheaper cameras have rather tiny sensors. The more expensive Digital SLR's use much larger ones, which is reflected in the resulting image quality. For quality results you should aim to get a digital camera with a Micro Four Thirds or larger sensor.

Late generation mobile phones have quite good quality cameras built in with 8 Mp or more. This is leading to a decline in the market for cheap cameras. As a result the manufacturers are shifting towards the high end quality with larger sensors and good

optical lenses. Sony has released their NEX camera range with SLR sized sensors. The latest and first on the market is Sony's RX1. It has a CMOS sensor with 24.3 Mp, a Carl Zeiss Sonar lens and costs close to \$3000 (see picture).

There is an abundance of products on the market now and some care needs to be taken in considering which camera is best for you. I keep my eyes on comparison tests and will write about these in future articles.



Good shooting – Keep sending photos to Maralyn.

Middle Harbour Yacht Club - Cruising Division

Treasurer's Report As at 30th Apr 2013

Cash at Bank as at 31.3.13	\$ 2,079.07
<u>Plus Receipts</u>	
Sale of Goods	\$ 50.00
<u>Less Payments</u>	
Cash at Bank as at 30.4.13	<u>\$ 2,129.07</u>
<u>Outstanding Receipts</u>	
<u>Outstanding Payments</u>	
Account Balance	<u>\$ 2,129.07</u>

Signed as a true record

Trevor D'Alton
Treasurer

**Middle Harbour Yacht Club Cruising Division
Annual General Meeting 2013**

Nomination Form

Position of Committee:

Name of Nominee:

Signature of Nominee:

Name of Proposer:

Signature of Proposer:

Name of Seconder:

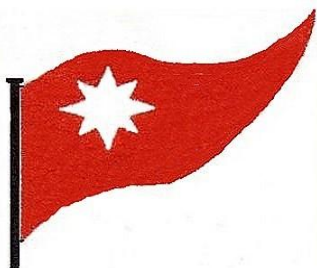
Signature of Seconder:

Please forward to the Secretary prior to the AGM Monday 17th June 2013
or hand to him prior to commencement of the meeting.

Quiz Answers.

1. d) The vessel is on port tack, the other is on starboard tack.
2. c) Bearings – refer to Coll. Regs.
3. a) If ship is under power (power gives way to sail) or
b) if in Sydney Harbour (local regs)
4. a) from sunset to sunrise and poor visibility
5. d) None – there is no difference
6. a) Epirb
7. b) Pair trawling
8. a) The Master only
9. d) Running on the back of the wave
10. d) Quarter between stern and beam

Members are invited to submit articles on subjects of interest, including sailing adventures, travel experiences, book reviews, jokes, and so on. Write your article with title, your name and boat name, and email to the editor.



The Cruising Division of MHYC meets on the 3rd Monday of each month, and uses as its sailing pennant a flag with a white compass rose on a red background.

MHYC Cruising Division members invite a raft-up or cruise in company whenever they fly our pennant, which we refer to as 'the compass rose'.

The Cruising Division newsletter is titled 'The Compass Rose Cruising Log' and is published monthly. The newsletter is also available through the MHYC web-site at

www.mhyc.com.au