

## **NOTICE OF RACE AND GENERAL SAILING INSTRUCTIONS 2024**

### **(Including the 2024 Season, the 2024 Australian Championship, and any other Standalone Regatta)**

#### **1. ORGANISING AUTHORITIES**

- 1.1 The Organising Authority (OA) for each regatta is the yacht club hosting that regatta in conjunction with the McConaghy 38 One Design Class Association.

#### **2. RULES**

- 2.1 The 'rules' are as defined in The Racing Rules of Sailing (2021-2024)
- 2.2 Boats shall comply with the 2021-2024 Australian Sailing Special Regulations Part 1 Equipment Category 7 requirements. In addition:
- (a) boats shall have Navigation Lights, V-sheet, 2 x red flares and 2 x orange flares conforming to SOLAS and not exceeding the manufacturers expiry date; and
  - (b) boats shall have a functional hand-held VHF radio for both safety purposes and Race Committee communication.
- 2.4 An Appendix to this Notice of Race (NoR) and Sailing Instructions (SI's) will be published prior to each regatta, detailing specific schedules and information pertinent to that regatta. When details in the appendix conflict with this NoR and SI's, the appendix shall apply.

#### **3. REGATTAS**

- 3.1 The following regattas are planned for 2024:

\* The club hosting the regatta is subject to class determination

Regatta	Dates in 2023 (scheduled racing)	Venue*
Act 1	10 March	MHYC
Act 2	14 April	MHYC
Act 3	26 May	MHYC
Act 4	23 June	MHYC
Act 5	8 September	MHYC
Act 6	6 October	MHYC
2024 Australian Championship	1-3 November	MHYC

#### **4. ELIGIBILITY**

- 4.1 Each regatta is open to all MC38 Class boats as defined by the MC38 Class Rules.
- 4.2 Owners or Charterers shall be current members of the International MC38 Owners Association Inc.
- 4.3 For each regatta, boats shall have third-party insurance covering the scheduled days of racing of at least AUD\$10,000,000 (ten million Australian dollars) for any one-claim event.

#### **5. ENTRY AND REGISTRATION**

- 5.1 Entries in the 2024 season championship occur when an entry in one of the Acts in NoR 3.1 is accepted.
- 5.2 Each regatta will have a separate entry process and a separate entry fee that shall be detailed in the appendix for each regatta.

5.3 The OA of the regatta may extend the time limit to NoR 5.3 at its discretion.

5.5 Crew weighing is required for the Australian championships only.

**6. COMMUNICATION**

6.1 Changes to the Sailing Instructions ashore will be posted two hours prior to the first scheduled warning signal on the day they take effect. Changes made afloat will be indicated by the display of Code Flag “L” displayed on the (RCV) and the change may be communicated via the VHF race management channel.

6.2 When flag AP is displayed ashore, ‘1 minute’ is replaced with ‘not less than 30 minutes’. This changes RRS Race Signals “AP”.

6.3 The Race Committee intends to broadcast race information on VHF before and during each race. The VHF channel will be advised in the Event Appendix.

6.4 The Class flag shall be the MC38 class flag or Code Flag “W”.

**7. TIME LIMIT**

7.1 Boats failing to finish within 15 minutes after the first boat finishes shall be scored Did not Finish ‘DNF’. This amends RRS 35, A4 and A5.

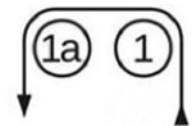
**8. MARKS**

8.1 The marks will be described in the Event Appendix.

**9. COURSES 1**

9.1 The RCV will signal the Course Number and may display the approximate magnetic bearing and distance in nautical miles from the RCV to the first mark.

Course 1	Start - 1 – 1a - Finish (Downwind)
Course 2	Start - 1 – 1a - Gate - Finish (Upwind)
Course 3	Start - 1 – 1a - Gate - 1 – 1a - Finish (Downwind)
Course 4	Start - 1 – 1a - Gate - 1 – 1a - Gate - Finish (Upwind)



9.2 All marks shall be rounded to port except the gate.

9.3 If mark 1a will not be used in a race this will be communicated via VHF before the warning signal.



9.4 Except when there is a change of course, the Gate will be positioned approximately 50m from the RCV. The Gate may be laid after the starting signal. If only one Gate mark is set, boats shall round the single mark to port.



**10. CHANGE OF THE NEXT LEG OF THE COURSE**

10.1 To change the next leg of the course, the race committee will lay a new mark (or move the finishing line) and remove the original mark as soon as practicable. In the event that the position of Mark 1 is changed, if Mark 1a is not laid boats shall round the new Mark 1 and proceed directly to the Gate, or to the Finishing Line, as appropriate. When, in a subsequent change a new mark is replaced, it shall be replaced by an original mark.

**11. AREAS THAT ARE OBSTRUCTIONS**

11.1 While racing, boats shall not sail:

- (a) within the area of water between the registered moorings and the adjacent shoreline. This includes Police or NSW Maritime moorings but excludes naval and shipping moorings;

- (b) within the area bounded by the Cardinal Marks:
  - (i) around the Sow and Pigs reef; and
  - (ii) near Dobroyd Head
- (c) between the Cardinal Mark(s) nearby and the shore of:
  - (i) Shark Island; and
  - (ii) Bradley's Head
- (d) within the area of water between yellow markers in the vicinity of:
  - (i) Garden Island; and
  - (ii) Chowder Bay.

11.2 These areas rank as obstructions.

## **12. GUESTS**

12.1 Guests may be permitted if this is stated in the Appendix to the NoR and SI's for a regatta.

12.2 While racing, guests shall not position any part of their legs outboard of the sheer line.

Furthermore, in races other than the Invitation Race, guests shall remain aft of the mainsail traveler and shall not participate in the crew work on the boat.

## **13. SCORING**

13.1 Scores are attributed to the owner or charterer of the boat in each regatta. For the purpose of scoring, the Class Authority is solely responsible for determining the owner or charterer.

13.2 Regatta Scoring: Each boat's score shall be the sum of all her races (no discards). One (1) race is required to be completed to constitute a regatta.

13.3 Season Championship Scoring:

- (a) Finishing places in an Act are used as the score for the season (1<sup>st</sup> in an Act = 1 point, 2<sup>nd</sup> in an Act = 2 points, 3<sup>rd</sup> in an Act = 3 points etc)
- (b) An owner or charterer that does not enter an Act will be scored as 1 point more than the number of entrants in that regatta.
- (c) The Australian Championship is a stand-alone regatta to determine the Australian Champion. The results of this regatta will not be included when scoring the Season Championship.

## **14. ADVERTISING**

14.1 Each boat shall display an MC38 Battle Flag on the forestay when it is berthed. Breaches of this rule will not be grounds for protest by a boat. This changes RRS 60.1(a).

14.2 Boats may be required to display sponsor flags or decals at each regatta. Details of any such requirement will be contained in the Appendix for that regatta.

## **15. BERTHING & HAUL-OUT**

15.1 From the time of the first Race Committee briefing until the end of the Prize-giving ceremony, boats shall be berthed at the location as determined by the OA when not sailing.

15.2 Except with and according to the terms of prior written permission of the Class Authority, boats shall not be hauled out from 1000hrs on the first scheduled day of racing at a regatta that the boat has entered until the boat has completed racing in the regatta.

## **16. COMMERCIAL SHIPPING IN SYDNEY HARBOUR**

16.1 Boats shall not interfere with the Commercial or Defence shipping of the Port. The attention of skippers is drawn to NSW Maritime Authority regulations regarding the right of way of vessels entering or leaving port, ferries displaying orange diamonds and vessels engaged in towing. NSW Maritime regulations specify "Priority over Sail – some Commercial Ferries on Sydney Harbour display an orange diamond shape which grants priority of way over sailing vessels. Do not attempt to cross the path of an approaching ferry displaying this signal".

16.2 All boats must abide by traffic directions of Sydney Ports and NSW Boating Service Officers. Any boat directed to stop or alter course by NSW Maritime Boating Service Officers shall do so immediately.

16.3 Any boats reported by NSW Maritime as having contravened NSW Maritime regulations shall be disqualified without a hearing. This amends RRS 63.1.

## **17. SUPPORT VESSELS**

17.1 Except in the case of an emergency, boats entered in a regatta shall not communicate with support vessels from the time the boat leaves the dock on a scheduled race day until the boat has completed racing for the day.

## **18. PRIZES**

18.1 Prizes may be awarded for 1st, 2nd & 3rd in each regatta. Other prizes may be awarded at the discretion of the McConaghy 38 One Design Class Association.

18.2 The title of MC38 Series Champion – shall be awarded to the winning owner or charterer for the particular series. Other prizes may be awarded at the discretion of the McConaghy 38 One Design Class Association.

## **19. RESPONSIBILITIES**

19.1 All those taking part in the regatta do so at their own risk and responsibility. Specific attention is drawn to RRS 4, which states; "The responsibility for a boat's decision to participate in a race or to continue racing is hers alone". The OA, sponsors, the International MC38 Class Association and the Race Committee are not responsible for any damage or injury either afloat or ashore.

19.2 The OA, sponsors, the International MC38 Class Association and the Race Committee are not responsible for the seaworthiness of a boat whose entry is accepted or the sufficiency or adequacy of its equipment.

19.3 All those taking part in the regatta are reminded of their obligations as set out in the Australian Sailing Special Regulations Part 1 clause 1.02 Owner's Responsibility.

19.4 Risk Warning: The OA advises owners, skippers and anyone who participates in yachting events conducted by the OA that participation in the sport of yachting, whether racing or otherwise, can be dangerous and can result in harm, personal injury and property damage. The OA is not responsible for any harm or injury suffered by any person in any yachting event conducted by the OA of whatever nature. All participants acknowledge that competing in yachting events may be dangerous and may result in harm or personal injury and participate in such events aware of such dangers and voluntarily accept any risk of harm.

19.5 It is the responsibility of owners and skippers to ensure that each boat nominated on the entry form complies with the 'rules' as detailed in NoR 2. All competitors who sign the entry form will have been deemed to have made a declaration to the OA that the nominated boat will at all times whilst racing comply with the rules, including:

- (a) the person who signs and lodges the entry form with the OA warranting to the OA that he or she will draw the attention of any person who competes on the boat being entered to the risk warning in NoR 19.4;
- (b) the person who signs and lodges this entry form with the OA acknowledging receipt of the risk warning above and releasing the OA from any claim or liability whatsoever for any harm or personal injury suffered by him, or by any person claiming through him, in any event conducted by the OA.

## **20. CONTACT DETAILS**

**International MC38 Class Association Inc.**

Mitch White

Phone: +61 405 000 210

Email: [mitch@onestopmarine.com.au](mailto:mitch@onestopmarine.com.au)