



**MHYC**  
MIDDLE HARBOUR YACHT CLUB

# **Skippers Briefing**

Season 2023-2024

Thursday 14 September 2023





# MHYC Skippers Briefing



## Agenda

- Introduction and Welcome
- NSW Maritime – Warwick Scott & Ben Brewer, Boating Safety Officers
- Keelboat Safety & Managing Emergencies on the Water
- Racing Rules of Sailing & Australian Sailing Special Regulations
- SailPass Temporary Membership
- Sailing Handbook 2023 – 2024
- 2023-2024 MHYC Series
- Race Management
- Important Reminders





# MHYC Sailing Committee



## Sailing Committee

Mitch White – Chairperson / VC Racing

John Crawford

Phil Darling

Sebastian Hultin

Katie O'Mara

Neil Padden

David Staley – Sailing Manager / PRO

## Divisional Representatives

Special Events Chairman – Ian Box

VC Cruising – Susanna Westling

VC Youth – Sebastian Hultin

Chief Safety Auditor – Phil Darling

Women's Sailing – Katie O'Mara

Division 1 & 2 – Neil Padden

Division 3 & Friday – John Crawford

Wednesday – Julie Hodder

Thursday Twilight – Phil Clinton

Adams 10 – Kim Darling

Farr 40 / TP52 – Gordon Ketelbey

Race Management – Steve Tucker

Race Management – Toby Gursansky





# Skipper's Briefing 2023-2024



- **Transport for NSW Maritime Briefing**  
Ben Brewer, Boating Education Officer  
Warwick Scott, Senior Boating Safety Officer



Transport  
for NSW



# **Transport NSW Maritime**

## **Skippers Briefing:**

### **Welcome to NSW 2022**



# Key Messaging

---

1. Lifejacket wear rules
2. Inflatable lifejackets
3. Minimum safety equipment
4. Sydney Harbour Boating Destinations
5. Sailing in Sydney
6. Incident reporting
7. New Years Eve



# 1. Lifejacket Wear Rules

## What lifejacket am I required to wear on my recreational vessel?

Boating activity/ Vessel type	Situation	Lifejacket options
Children under 12 years of age	<ul style="list-style-type: none"> <li>At all times in a vessel <b>under 4.8 m</b></li> <li>When in an open area of a <b>vessel 4.8 m–8 m</b> that is underway:               <ul style="list-style-type: none"> <li>On enclosed and alpine waters</li> <li>On open (ocean) waters.</li> </ul> </li> </ul>	Level 100+, 50 or 50S Level 100+
On all boats <b>less than 4.8 m</b> (unless specified)	<ul style="list-style-type: none"> <li>All occupants on enclosed waters when:               <ul style="list-style-type: none"> <li>Boating at night</li> <li>Boating alone (without an accompanying adult aged 16 or older, licenced person or support vessel)</li> </ul> </li> <li>At all times on open waters</li> <li>At all times on alpine waters.</li> </ul> In addition to the above: <ul style="list-style-type: none"> <li>At all times if the vessel is being used more than 200 m from the shore to transport persons or goods between the shore and a vessel, or between vessels.</li> </ul>	Level 100+, 50 or 50S Level 100+, 50 or 50S Level 100+ Level 100+, 50 or 50S Level 100+ (open waters) Level 100+, 50 or 50S (enclosed and alpine waters)
Personal watercraft (PWC)	<ul style="list-style-type: none"> <li>On enclosed and alpine waters at all times</li> <li>On open waters (including coastal bars) at all times.</li> </ul>	Level 100+, 50 or 50S Level 100+ or 50.
Crossing coastal bars	<ul style="list-style-type: none"> <li>All vessels, everyone on board.</li> </ul>	As per open waters requirement for vessel type



## 2. Inflatable Lifejackets Pre-wear

Gas cylinder (& auto-firing canister) screwed in



Keep cord free







# Inflatable Lifejackets

## Annual Servicing

Inflatable lifejackets **must** be serviced according to the manufacturers instructions and service records kept.

1. Can it be self-serviced?
2. Visual inspection of exterior
3. Visual inspection of interior
4. Weigh gas canister
5. Ensure firing pin is functioning
6. Check expiry on auto-inflate canister
7. Manually inflate with mouth piece
8. Document



# 3. Minimum Safety Equipment

## Enclosed waters



**Lifejacket**  
A buoyant jacket designed to keep a person afloat in the water. They must be carried for each person onboard small vessels, must be the correct size for the wearer and in good working condition. The Level of lifejacket required varies between enclosed and open waters. Make sure you have the correct Level of lifejacket for the area of operation, boat type or boating activity.



**Anchor and chain/line**  
Must be the correct type and size of anchor for your vessel and the area of operation. Required on all vessels at all times, unless exempt.

**Sound signal**  
Vessels must have a means of providing a sound signal such as an air horn, whistle or bell, which can be used to signal other vessels.



**Waterproof torch**  
A valuable safety device for signaling, for use as navigation lights on small vessels or for increased visibility. A waterproof torch must be operational and carried on all vessels at all times, unless exempt.



**Bailer/bucket/ fire bucket**  
A robust bucket, with lanyard attached, can be used for bailing water and fighting fires. Required on all vessels at all times, unless exempt.

**Safety label**  
Indicates the maximum number of people to be carried on a particular vessel and must be displayed on all powered vessels except PVC. Available for vessels under 6m, over 6m and those with flybridges.



**Bilge pump**  
A manual or powered pump must be capable of draining each compartment of the vessel if the vessel has covered bilges.

**Fire extinguisher**  
Vessels with an electric start motor, gas, fuel stove or battery must carry an appropriate fire extinguisher.



**Paddles/oars and rowlocks**

Must be capable of rowing the vessel in which they are carried and are required on most vessels under six metres in length, unless the vessel has a second means of propulsion.

## Open (ocean) waters

In addition to enclosed waters equipment

### Compass

A navigational instrument which shows direction relative to magnetic North and is required by all vessels operating offshore. The compass must have a rotating card and be liquid damped.



### Distress flares

Orange smoke hand-held flares for use during the day and red hand-held flares for use at night, are used to signal that you are in trouble. At least two orange smoke and two red hand-held flares must be carried on all vessels operating in open (ocean) waters and must be in date.

### V Sheet

A fluorescent orange-red coloured sheet (1.5m x 1.2m minimum) that can be spread over the deck or floor as a flag to indicate that you are in trouble. It is required to be carried by all vessels operating on open (ocean) waters.



### Ocean Water

Two litres of fresh drinking water per person must be carried by all vessels operating on open (ocean) waters in case of an emergency.



### Map/chart

A clearly legible (paper or electronic) chart/map of the area proposed for the vessel's voyage or excursion showing significant features for navigation such as shoalwaters, reefs, hazards and channels is required on all vessels operating in open (ocean) waters.

## Open (ocean) waters 2 nautical miles from shore

In addition to enclosed and open waters equipment

### Marine radio

A communication device that allows contact with other vessels and shore stations for weather, navigation hazards and distress calls. Compulsory for all vessels operating more than two nautical miles from shore.



### Emergency Position Indicating Radio Beacon (EPIRB)

A locating device that emits a 406MHz signal that can be detected by satellites and aircraft when you are in trouble. Compulsory for all vessels operating more than two nautical miles from shore, must be in date according to the manufacturer's expiry date and registered with AMSA.



For more information talk to a Boating Education Officer or visit [rms.nsw.gov.au/maritime](http://rms.nsw.gov.au/maritime).

Tenders (if operating in enclosed waters, less than 3m in length and operating within 200m of the shore)

Exempt from carrying other safety equipment if the vessel carries a paddle or oars, a waterproof torch if operating between sunset and sunrise, a bucket/bailer or bilge pump.



# 4. Sydney Harbour Boating Destinations



While enjoying your day out on Sydney Harbour, look out for marinas displaying a green banner allowing you free temporary access to quality facilities and amenities. Boaters are reminded to call marinas ahead to confirm availability.



MARINA	SERVICES AND AMENITIES	GPS COORDINATES	MARINA	SERVICES AND AMENITIES	GPS COORDINATES
<b>Balmain Marina</b> Ph: 02 9555 7049 balmainmarina@bigpond.com		S33 49' 17.64" E151 10' 16.449"	<b>Kirribilli Marina</b> Mosman NSW 2088 Ph: 02 9968 1255		S33 50' 39.376" E151 12' 56.199"
<b>Balmoral Boatshed</b> info@balmoralboatshed.com.au		S33 51' 40.872" E151 14' 52.994"	<b>Manly Boat Shed</b> Ph: 0419 273 204 manlyboatshed.com		S33 47' 53.842" E151 16' 24.027"
<b>Cameron's Marina</b> Ph: 02 9810 7808 kathy@cameronsmarina.com.au		S33 51' 19.152" E151 10' 17.432"	<b>Middle Harbour Yacht Club</b> Ph: 02 9969 1244 info@mhyc.com.au		S33 49' 1.499" E151 14' 38.207"
<b>Cammeray Marina</b> Ph: 02 9949 5399 steve@clontarfmarina.com.au		S33 49' 7.872" E151 13' 22.349"	<b>Point Piper Marina</b> Ph: 02 9327 7847 sandra@pointpipermarina.com.au		S33 52' 6.064" E151 15' 11.829"
<b>Clontarf Marina</b> Ph: 02 9943 5399 tracey@clontarfmarina.com.au		S33 48' 15.469" E151 15' 10.38"	<b>Rose Bay Marina</b> Ph: 02 9327 7847 sandra@pointpipermarina.com.au		S33 52' 14.887" E151 15' 17.366"
<b>Cruising Yacht Club of Australia</b> Ph: 02 8292 7800 cyca@cyca.com.au		S33 52' 26.504" E151 14' 2.5"	<b>Roseville Bridge Marina</b> Ph: 02 9417 8222 rosevillemarina@bigpond.com		S33 46' 39.209" E151 12' 22.525"
<b>d'Alboras Marinas – Cabarita Point</b> Ph: 02 9743 6277 info@dalboramarinas.com.au		S33 50' 36.582" E151 74' 11.481"	<b>Smiths Boatshed Marina, The Spit</b> Ph: 02 9968 1100 mj@0408696959.com		S33 51' 40.872" E151 14' 52.994"
<b>d'Alboras Marina – The Spit</b> Ph: 02 9960 7700 info@dalboramarinas.com.au		S33 48' 15.07" E151 14' 14.541"	<b>Sydney Superyacht Marina Pty Ltd</b> Ph: 0418 222 508 www.superyachtmarina.com.au justin@superyachtmarina.com.au		S33 52' 9.998" E151 10' 49.918"
<b>Double Bay Marina</b> Ph: 02 9327 2400 office@doublebaymarina.com.au		S33 52' 26.105" E151 14' 43.857"			
<b>Fergusons Marina, The Spit</b> Ph: 0401 159 053 mail@tacka.com.au		S33 51' 40.872" E151 14' 52.994"			
<b>Gladesville Bridge Marina</b> Ph: 02 9181 2014 matt@gbmarina.com.au		S33 48' 14.508" E151 14' 46.989"			

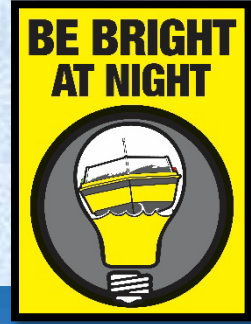
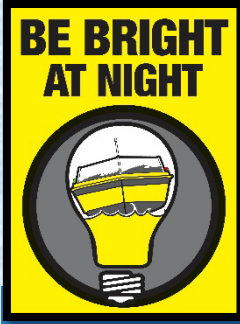




# Courtesy Moorings





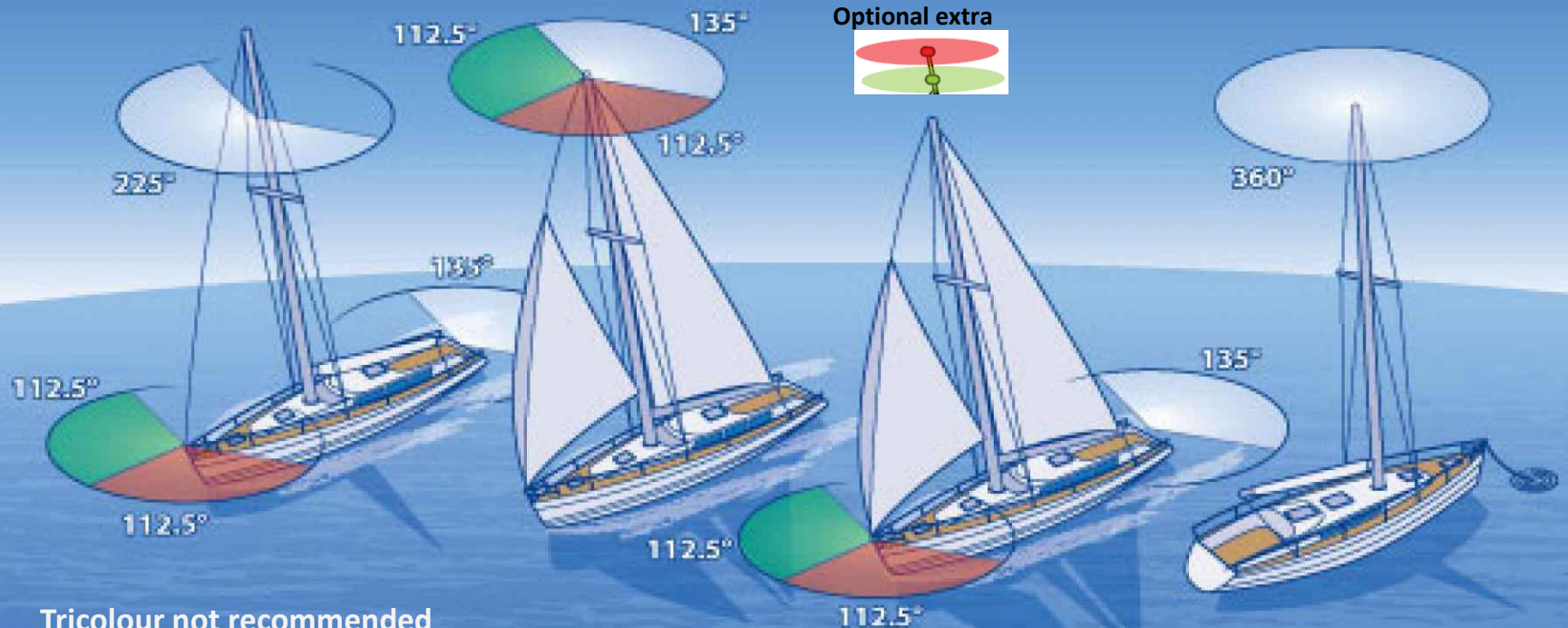


# 5. Sailing in Sydney Navigation Lights

Under sail

Under motor

At anchor



- Tricolour not recommended
- Not compliant for vessels under motor - steaming light must be a --minimum of 1m above sidelights (COLREGS Annex 1 Rule 2 (d)(h))

Use a torch to illuminate sails in busy areas or when another vessel seen approaching



# Rules & Regs

## Sailing Events

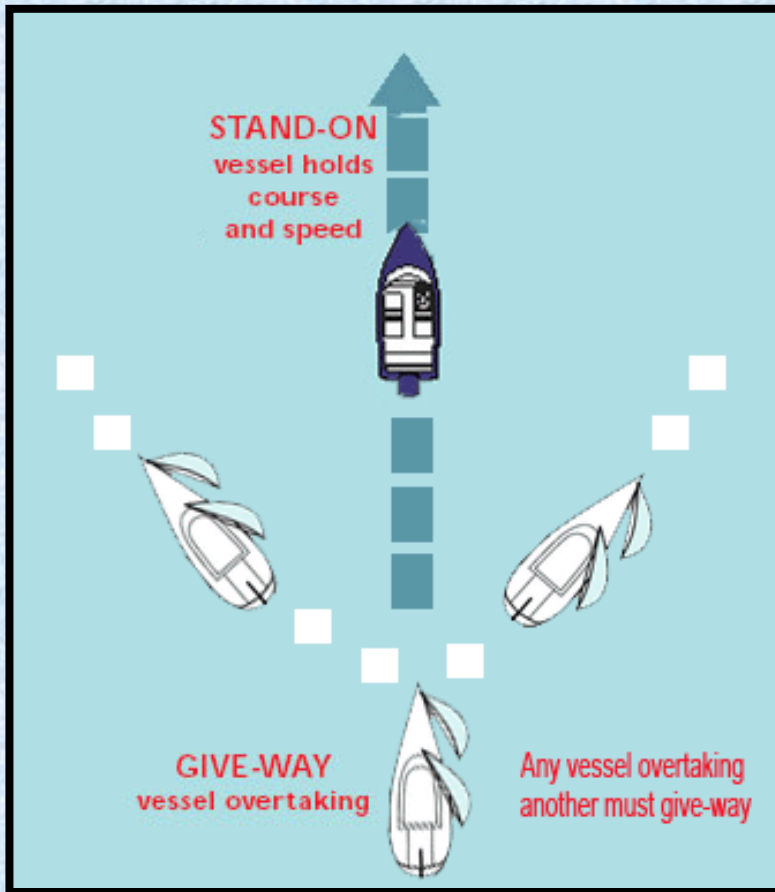




# Racing Rules

1. Interaction with other competing vessels:
  - Australian Sailing Racing Rules of Sailing
2. Interaction with non competing vessels:
  - International Regulations for the Prevention of Collisions at Sea 1972 (COLREGS).

# COLREGS Rule 13 - Overtaking



(a)

Any vessel overtaking any other shall keep out of the way of the vessel being overtaken

(d)

Any subsequent alteration of the bearing between the two vessels shall not make the overtaking vessel a crossing vessel or relieve her of the duty of keeping clear of the overtaken vessel until she is finally past and clear.

# COLREGS Rule 9 – Narrow Channels

---

**(b)**

A vessel of less than 20 metres in length **or** a sailing vessel shall not impede the passage of a vessel which can safely navigate only within a narrow channel or fairway.

i.e. **KEEP CLEAR OF LARGE VESSELS!**



# COLREGS Rule 18: **NSW Special Rule** **Orange Diamond - Priority over sail signal**



(2) The operator of a sailing vessel **must** keep out of the way of, and keep a safe distance from, a vessel displaying a priority over sail signal.



# STEER CLEAR



## of Big Ships and Ferries Event Condition

Before heading out check the Daily Vessel Movements on the Sydney Ports website: [www.sydneyports.com.au](http://www.sydneyports.com.au)

- ✓ Listen to the safety broadcast from Sydney Ports' 24/7 Vessel Traffic Service (VTS) centre on VHF Channel 13 for details of vessel movements
- ✓ Monitor VHF Channel 13 for position reports from vessels
- ✓ Always keep a lookout for seagoing ships and **STEER CLEAR** of them

- ✗ **DO NOT** pass between the escort vessel and the seagoing ship
- ✗ **DO NOT** pass within 30 metres of the side or stern of a seagoing ship
- ✗ **DO NOT** anchor in a channel or fairway
- ✗ **DO NOT** block a channel or fairway

24 HOUR HARBOUR OPERATIONS  
VHF CHANNEL 13

Do not pass between escort vessel and seagoing ship



Escort vessel identified by Red and Blue Flashing lights.



### 1. Big ship

- Keep 500m from bow,
- 30m from sides & stern
- Do not pass between pilot vessel and ship

### 2. Ferries

- Keep 200m from bow,
- 30m from sides & stern

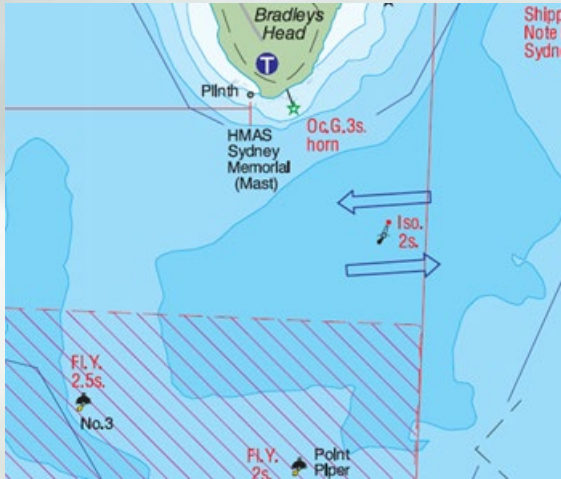


# Responsibilities between vessels

---

If you are under motor (including motor sailing) you are a **power-driven vessel**

# ADDITIONAL CONDITIONS: SAILING EVENTS



**Safe Water Mark**

**Leave to Port**



...or if that is not practicable participants must maintain a safe distance from other vessels.

# 6. Incident Reporting

---

## Significant incidents

(i.e. incident has resulted in death or injury to a person resulting in admittance to hospital; significant damage to a vessel (>10% value) or other property; damage or risk to the environment)

- Advise NSW Maritime

Complete Vessel Incident Report Form

<https://www.nsw.gov.au/topics/waterways-safety-and-rules/emergencies/incident-response>



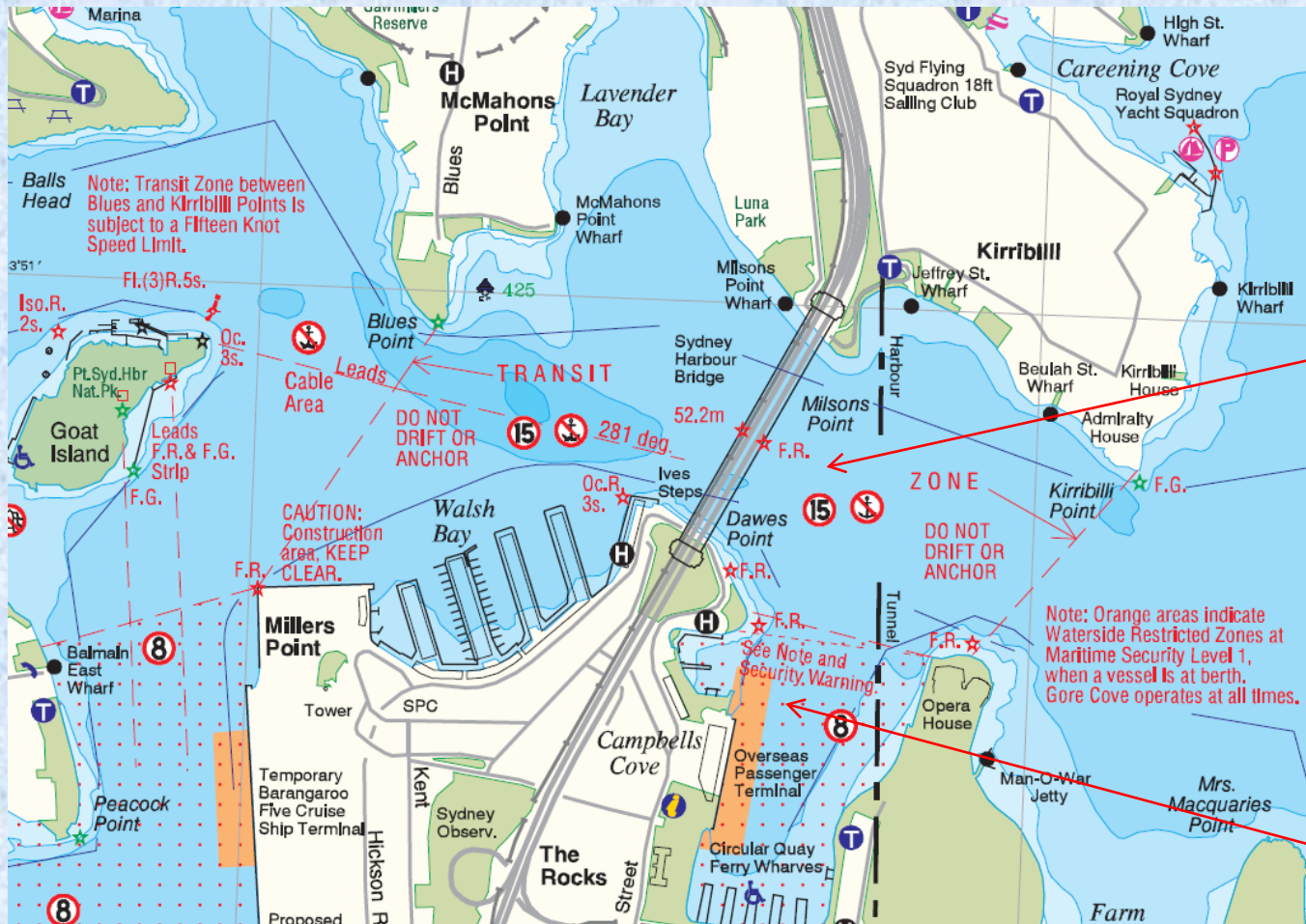
## 6. New Years Eve



**The Permissible Concentration of Alcohol (PCA) on the water is the same as for the road:**

Commercial Vessel Operator	under 0.02
Recreational Vessel Operators (under 18 years)	0.00
Recreational Vessel Operators (18 years and over)	under 0.05

# Sydney Harbour Bridge Transit Zone



Entry to Sydney Cove by recreational vessels is prohibited.





# Spectacular, but can be busy and stressful!



- **Get a spot early**
- **Have plentiful fenders**
- **Be prepared for congestion.**

**Thank you!**





# Safety & Risk Management



- Safety Category Compliance
- Marine Operations Policy
- Incident Management Plan
- Keelboat Safety Forum – Wednesday 27 September at 7pm
- MOB Training – Sunday 8 October at 10am
- Notices to Competitors
- Race Officer is Incident Controller unless escalated
- Inform the RO of safety hazards or on-water incidents







# RRS & Special Regulations



- The 2021-2024 World Sailing Racing Rules of Sailing remain in effect from 1 January 2021 until 31 December 2024
- To download the RRS – [click here](#)
- Printed copies of the Racing Rules of Sailing (laminated or unlaminated) are available at Reception
- MHYC Requirements – A current copy of the Racing Rules of Sailing (electronic or printed)
- The Australian Sailing Special Regulations apply for all MHYC races. For information – [click here](#)





# Equipment Safety Audits



## Audit Procedure

- Free Get Checked Day were conducted on 24 June and 20 August, but additional audits can be arranged
- Bookings are essential – email [sailing@mhyc.com.au](mailto:sailing@mhyc.com.au)
- Audits conducted outside of the Get Checked Days attract the following fees:
  - \$50 for Categories 1-2
  - \$30 for Categories 3-4
  - \$20 for Categories 5-7





# Equipment Safety Audits



## **Documents to be submitted to the MHYC Sailing Office**

- Completed AS Special Regulations Audit Form
- Completed MHYC Requirements Form
- Copy of Current Insurance Policy
- Copy of Current Registration
- Class or Rating Certificates







# Inspection after Grounding



## NOR 11.7 & 11.8

- Cat 1-3 – see new SR 3.02.6 for procedure
- Cat 4-7 – MHYC requirement the person in charges inspects for any structural damage and satisfy themselves the vessel is still safe
- All unintentional groundings – rocks or sand/mud, however minor
- Guidelines in SR App C “Model Keel and Rudder Inspection Procedure”





# SailPASS



- SailPass is a temporary membership that enables someone who is not a sailing member of an affiliated club to go sailing. To get a SailPass – [click here](#)
- Ensures all crew are affiliated with a club and boats are complying with the racing rules and regulations
- Provides personal accident insurance
- For non-members, SailPass provides a flexible, accessible, easy & affordable introduction to sailing
- Online registration is mobile friendly
- Each MHYC boat that enters any series receives a code for 10 free SailPasses
- Daily SailPass fee is \$15 for 2023-2024





# Sailing Handbook & Race Docs



- Sailing Handbook
- Sailing Handbook and Individual Race Documents online <https://mhyc.com.au/sailing/keelboat-division/keelboat-noticeboard>
- By-Laws, Safety & Emergency Procedures
- Season Notice of Race & Series Sailing Instructions
- Inshore Pointscore (Inshore, CCIS, SHSS, Feature)
- Feature Event NOR & Individual Sis (not in Handbook)
- Regatta NORs and Sis (not in Handbook)





# Sailing Handbook & Race Docs

75 Lower Parramatta Road, The Spit, Mosman NSW 2088  
T: (02) 9000 1244 | E: info@mhy.com.au  
Donate here to help upgrade the clubhouse & facilities

1

SailSys ENTRY & RESULTS  
SHORT OCEAN RACING  
SYDNEY HARBOUR RACING  
MHYC MERCHANDISE  
SailPASS



HOME SAILING LEARN TO SAIL MEMBERSHIP MARINA CRUISING CLUB INFO CONTACT

2

3

Welcome to Middle Harbour Yacht Club

- SailPass
- Regattas & Championships
- Online Entry
- Keelboat Racing
- Crew & Crewing
- Centreboard Racing
- Women's Sailing
- Sailability
- National Training Centre / AST
- Volunteers
- MHYC Vessel Register
- Crew Registration
- Club Racing Notice Board
- 2023-2024 Racing Schedule
- Results
- MHYC Keelboat Trophies
- Protests
- Special Regulations
- Handicapping at MHYC





# Sailing Handbook 2023-2024





# Sailing Handbook 2023-2024



## Important Pages & Information

- Page 9 Safety and Emergency Procedures
- Page 10 Emergency Management
- Page 10 Reporting Marine Incidents
- Page 11 NSW Maritime Brief
- Page 12 Ship & Ferry Exclusion Zone
- Page 13 Harbour Evacuation Points

Emergency on the Water

**Call 000**

NSW Water Police







# Sailing Handbook 2023-2024



## Key Changes to the Handbook

- Sailing Committee & Divisional Contacts added (p6)
- Schedule of Races Table for Inshore ORC/IRC/PHS refers to Inshore, CCUIS, SHSS and Feature Event Sailing Instructions (p39)
- Class Flags – Division 12, Adams 10 and Farr 40 removed. One-Design classes will sail with Divisions 1, 2 & 3 as appropriate (p41)
- Class Flags – Adams 10 Class Flag is the Class Insignia
- Inshore Naval Course Chart and Inshore Courses – Minor changes (pp41-47)
- Sydney Harbour Combined Clubs Inshore Series SIs added (p48)
- Sydney Harbour Sprint Series SIs added (p54)
- Pacific Rigging Wednesday Non-Spinnaker Pursuit – Self-shortening provision removed from SI 4.2 & courses updated (p63)





# Sailing Handbook 2023-2024



## Key Changes to the Handbook cont'd.

- Flagstaff Marine Thursday Twilight – the start and finish will be in the vicinity of Hunters Bay Balmoral or The Sound – SIs 6.2 & 7.1 (p72)
- Flagstaff Marine Thursday Twilight – courses updated (pp75-78)
- Friday Spinnaker Twilight Fleet Series – Sailing Instructions added (p80)
- Winter Pursuit Series removed
- Winter Sprint Series replaced by Sydney Harbour Sprint Series – Winter





# Wednesday Non-Spinnaker Series



- Pacific Rigging Wednesday Non-Spinnaker Series
- Pursuit racing
- 51 races scheduled across 4 series year-round
- 2 divisions
- Average 20 starters
- Clubhouse start and finish (unless shortened on-water)







# Thursday Twilight Series



- Flagstaff Marine Thursday Twilight Non-Spinnaker Series
- Pursuit racing
- 24 pointscore races and 1 non-pointscore race
- NPS on 28 Sep then 11 races in Pre-Christmas Series
- 14 races in Post-Christmas Series
- 6 races of Smithy's Waterproofing Women's Twilight Series
- On-water start and finish (unless clubhouse finish signaled)
- Race management volunteers welcomed





# Friday Twilight Series – NEW



- Friday Twilight Spinnaker Series
- Fleet racing
- 11 pointscore races – fortnightly during daylight saving
- 2 spinnaker divisions and 1 cruising division (TBC)
- **On-water start and finish** (unless clubhouse finish signaled)
- Beach BBQ afterwards
- Race management volunteers welcomed





# Ocean Pointscore Series



- 6 race pointscore series
- CYCA Short Ocean Pointscore Series (3 race days)
- Sydney Short Ocean Racing Championship (3 races over 2 race days)
- All races scored on IRC, ORC and PHS for Divisions 1 & 2
- One clash with Inshore Pointscore on February 17







# Annual Inshore Pointscore



- 21 race Saturday pointscore series
- Sydney Harbour Combined Clubs Inshore Series (7 races)
- Sydney Harbour Sprint Series (9 races over 3 race days)
- MHYC Feature Events (3 races)
- MHYC Inshore Races (2 races)
- All races scored on ORC, IRC and PHS for Divisions 1, 2 & 3 with OD results extracted for classes with 4 or more entries
- Elapsed times from Feature Event pursuit races used to calculate results





# Combined Clubs Inshore Series

- Sydney Harbour Combined Clubs Inshore Series (7 races)
- OA is MHYC, MYC, RANSA, RPEYC, RSYS & VYC
- MHYC race management on November 18 with Manly YC
- MHYC race management on March 16
- Similar courses to 2022-2023 but start for Easterly course moved to Athol Bay



Sydney Harbour Combined Clubs Inshore  
Series 2023-2024





# Sydney Harbour Sprint Series



- Sydney Harbour Sprint Series (18 races) – OA is MHYC
- Inshore Pointscore includes 9 W/L races in the Spring Series
- Spring Series – October 14, November 11 & December 2
- 3 races per day starting at 1200hrs
- Starts for Divisions 1, 2 & 3 with One Design results extracted for classes with four or more entries
- Winter Series – May 25, June 15 & July 13



**SYDNEY HARBOUR**  
***SPRINT SERIES 23/24***







# Feature Events



- Increased to 11 races (every month except August)
- New – Picnic Race in February & Autumn Sail in May
- Clubhouse start & finish pursuit race
- 3 races used to calculate results for Inshore Pointscore using elapsed times
- 4 of the Feature Events will make up the Two-Handed Series – 2 September, 13 January, 18 May & 27 July





# Feature Events



- 2 September - **Commodore's Cup** (Two-Handed Series)
- 7 October - **Harbour Trek** (Inshore Pointscore)
- 25 November - **Seven Islands Race**
- 16 December - **Christmas Cup** (Inshore Pointscore)
- 13 January - **Chaos Cup & Bedlam Point Cup** (Two-Handed Series & Beneteau Series)
- 3 February - **Picnic Race**
- 9 March - **March Cup** (Inshore Pointscore & Beneteau Series)
- 25 April - **Two Up Cup** (ANZAC Day)
- 18 May - **Autumn Sail** (Two-Handed Series)
- 22 June - **Welcome to Winter**
- 27 July - **Christmas in July** (Two-Handed Series)





# Sydney Harbour Womens Keelboat Series



- Sydney Harbour Combined Clubs Inshore Series (5 races)
- OA is CYCA, MHYC, MYC, RANSA & RSYS
- MHYC race management on Sunday 24 September 2023



SYDNEY HARBOUR  
WOMEN'S KEELBOAT  
SERIES





# Regattas



- Adams 10 Waitangi Cup – Oct 21 & 22
- Sydney Short Ocean Racing Championship – Nov 25 & 26
- Adams 10 NSW Championships – Dec 2 & 3
- Sydney Harbour Regatta – Mar 2 & 3
- Inclusive Classes Regatta – Easter (29 Mar – 1 Apr)
- X-Yachts Aurum Cup – Jul 22
- MHYC Women's Regatta – Aug 3
- MC38 Acts 1-7 September to June
- Race Management Volunteers Welcomed







# Charity & Corporate Regattas



- Friday, 17 November 2023 ASX Refinitiv Foundation Regatta (OW)
- Tuesday, 6 February 2024 SAP Redkite Charity Regatta (CH)
- Friday, 23 February 2024 RFI Spurious Challenge (CH)
- Friday, 22 March 2024 Renewable Energy Cup (OW)
- *Support through providing a boat, skipper and crew for hosting charity guests is greatly appreciated*





# Online Entry



## SailSys Entry System

- Entries for the 2023-2024 are now open – [click here](#)

Pacific Rigging Wednesday Non-Spinnaker Series - Season 2023/24 Entry (All 4 Series)

Series Name	Next Race	Action
Pacific Rigging Wednesday Non-Spinnaker Series - Season 2023/24 Entry (All 4 Series)	Includes: Series 1 - Pacific Rigging Wednesday Non-Spinnaker 2023/24, Series 2 - Pacific Rigging Wednesday Non-Spinnaker 2023/24, Series 3 - Pacific Rigging Wednesday Non-Spinnaker 2023/24, Series 4 - Pacific Rigging Wednesday Non-Spinnaker 2023/24 Next Race: Race 2, 19th September 2023	Enter
Series 1 - Pacific Rigging Wednesday Non-Spinnaker 2023/24	Next Race: Race 2, 19th September 2023	Enter
Series 2 - Pacific Rigging Wednesday Non-Spinnaker 2023/24	Next Race: Race 1, 6th December 2023	Enter
Series 3 - Pacific Rigging Wednesday Non-Spinnaker 2023/24	Next Race: Race 1, 6th March 2024	Enter
Series 4 - Pacific Rigging Wednesday Non-Spinnaker 2023/24	Next Race: Race 1, 5th June 2024	Enter

Feature Event Series 2023/24

Series Name	Next Race	Action
Harbour Trek 2023/24 (Incl Two Handed Series Race 1)	Next Race: Race 1, 7th October 2023	Enter
Seven Islands Race 2023/24	Next Race: Race 1, 25th November 2023	Enter
Christmas & Veterans Cup 2023/24	Includes: Two Handed Division, Old Dogs Bowl Trophy (Skipper and Boat 90 years old plus), Veterans Cup (Boat 90 year plus) Next Race: Race 1, 16th December 2023	Enter





# Online Entry



## SailSys Entry System (cont'd)

- Discount entry for MHYC Members & Block Series Entries
- Discounted casual race fees for online entry
- Check or update your contact details (email and mobile) to enable notifications via SailSys
- Daily Crew Registration via SailSys is required
- Sailing 10 Pass also available for discounted casual racing in any series (via Reception / Sailing Office)





# Race Management & Safety



- **Accredited Race Officers** – Steve Tucker, Toby Gursansky, Demetris Cristodoulou, Kim Darling, Kathy Johnston, Michael Mansley, Robert Mason, Rob Ogilvie, Catherine Rofe, Andrew Rogers & David Staley
- **Race Management Volunteers** – Rob Armstrong, Paula Beaumont, Fernando Calero, Phil Clinton, Brad Hair, Fred Hemming, Bryan Moore, Sue Morris, John Roxburgh, Chris Saunders, Tracy Saunders-Murray, Renee Spinks, Rachel Ward, Alex Ware, Andrew Ware, Robert Warnes, Greg Young
- **Accredited Protest Committee Members** – Kerry Burke, Geoff Charters, John Crawford, Catherine Rofe, Nathan Blair
- **Accredited Safety Equipment Auditors** – Phil Darling, Tony Levett, Michael McEvoy, Evan Hodge, Bryan Moore, Phil West, Glynne Attersall, Deborah Dalziel, Andrew Forbes, Peter Lewis, Matt Miles, Dallas O'Brien, Catherine Rofe & Paul Wotherspoon
- **MHYC Sailing Office**  
Sailing Manager & Principal Race Officer – David Staley  
Sailing Administrators – Catherine Rofe & Kathy Johnston (KJ)







# Race Management Volunteers



- Competitor's Race Management Scheme (Handbook p 32) – let Catherine or KJ know the preferred date/s your boat would like to provide a volunteer to assist the team
- Regatta weekends have a high demand for volunteers
- Take the time to help out, you would be surprised what you learn when you volunteer for race management
- On Water and Onshore roles, Saturdays, Sundays & Midweek
- Informal and formal training opportunities are available (race management & officiating, powerboat handling, radio etc.)





# Reminders - Procedures



- Read the By-Laws, Notice of Race & Sailing Instructions
- Notices to Competitors are posted on the [Keelboat Racing Noticeboard](#)
- Check in at the Start Boat (NOR 18.1)
- Do not sail through the finish line unless finishing (NOR 19.2)
- As a courtesy – avoid sailing through other clubs' start and finish lines
- Advise Race Committee if retiring (NOR 20)





# Reminders - Procedures



- A written incident report must be forward to NSW Maritime within 24 hours if one of the following applies:
  - The incident has resulted in the death, or injury to, a person
  - The incident has result in damage in excess of \$5000 to a vessel or any other property
  - Damage or risk to the environment has occurred
- Incident Report Form online (MHYC or NSW Maritime website)





# Reminders – Safety & Information



- Race management and safety information is transmitted on VHF Channel 72 for most MHYC Series
- Race management and safety information is transmitted on VHF Channel 73 for the Combined Clubs Inshore Series
- Alternative race management frequencies may be advised
- Recommended that the Race Management Channel be monitored from 30 minutes before the first warning signal until the conclusion of racing







# Questions





# Thankyou!

*Good luck for Season 2023-2024*

